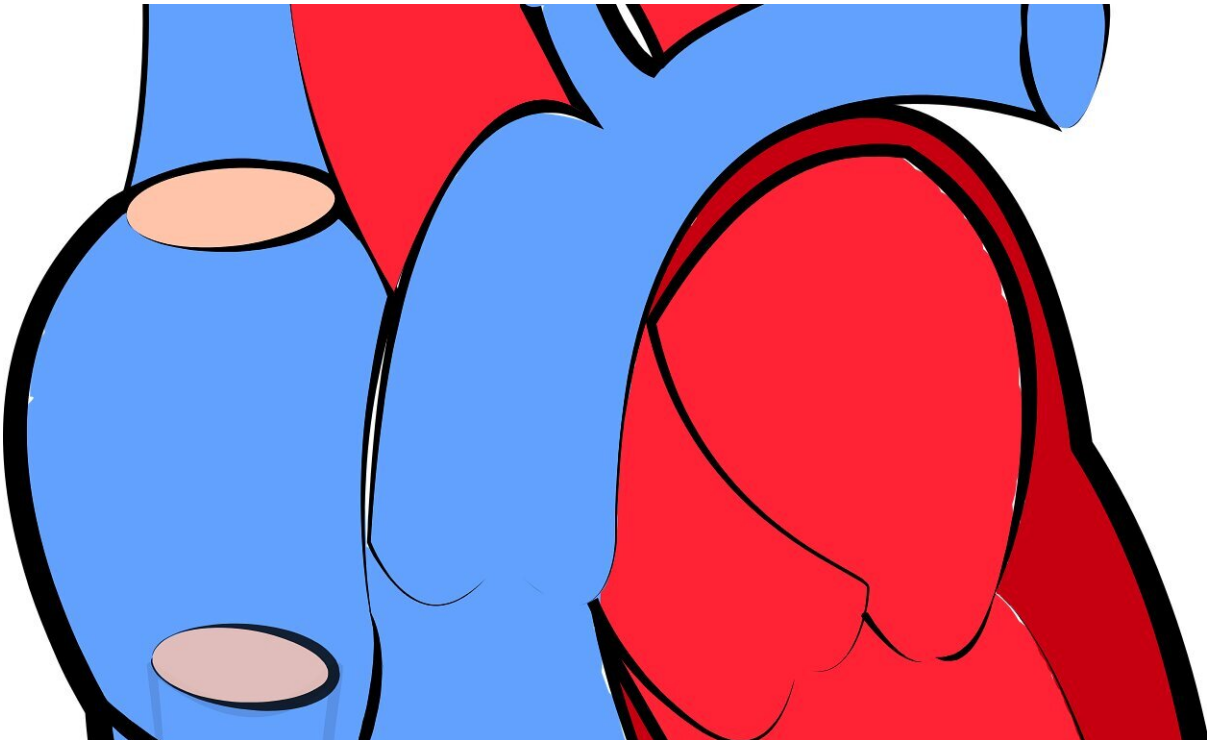


Novel necklace detects abnormal heart rhythm

May 5 2020



Credit: CC0 Public Domain

An ingenious necklace which detects abnormal heart rhythm will be showcased for the first time on [EHRA Essentials 4 You](#), a scientific platform of the European Society of Cardiology (ESC).

"The wearable necklace-ECG (electrocardiogram) provides a new and

easy method for detecting an [abnormal heart rhythm](#) called atrial [fibrillation](#), which is a fast-growing public health problem," said study author Mr. Elmeri Santala, a [medical student](#) at the University of Eastern Finland.

One of the major causes of stroke is unrecognised and untreated atrial fibrillation. Approximately 25% of all strokes are caused by atrial fibrillation. While it is the most common [heart](#) rhythm disturbance, atrial fibrillation is often symptomless and intermittent, making its detection and diagnosis challenging. Innovative methods for detection are therefore needed.

This study examined the diagnostic accuracy of an ECG worn around the neck (see photo). A single-lead ECG is embedded into the pendant.

To measure their heart rhythm, users start an application on their smartphone then place the necklace pendant between the palms of their hands or between the palm and the chest for 30 seconds. Data are automatically sent to a cloud service and analysed for atrial fibrillation using artificial intelligence (AI). Within a few seconds, the smartphone application displays the results of the analysis. An ECG report is also generated for physicians to confirm the diagnosis.

The study enrolled 145 adults who used the necklace to measure their own heart rhythm. Participants simultaneously underwent a three-lead ECG recording as a 'gold standard' comparison.

Two cardiologists analysed all ECG readings without knowing the initial rhythm (i.e. they were blinded to the 3-lead ECG recordings and initial 12-lead ECG). Automated AI analysis of the necklace ECG was also performed.

The necklace produced ECG recordings with excellent quality to detect

and diagnose atrial fibrillation. Atrial fibrillation diagnoses made by standard ECG measurement were also picked up by the necklace device with [high accuracy](#)—both the automated AI analysis and interpretation of the ECG report by a cardiologist.

Mr. Santala said: "The necklace ECG is simple to use and allows repetitive self-monitoring of heart [rhythm](#), thereby improving the likelihood of detecting atrial fibrillation. The ESC recommends screening for atrial fibrillation in people over 65 years of age and in those at high risk of stroke;¹ automated analysis by the necklace ECG is well suited for this purpose. Diagnosis of [atrial fibrillation](#) should always be confirmed by a physician using the ECG report."

Provided by European Society of Cardiology

Citation: Novel necklace detects abnormal heart rhythm (2020, May 5) retrieved 8 March 2024 from <https://medicalxpress.com/news/2020-05-necklace-abnormal-heart-rhythm.html>

<p>This document is subject to copyright. Apart from any fair dealing for the purpose of private study or research, no part may be reproduced without the written permission. The content is provided for information purposes only.</p>
--