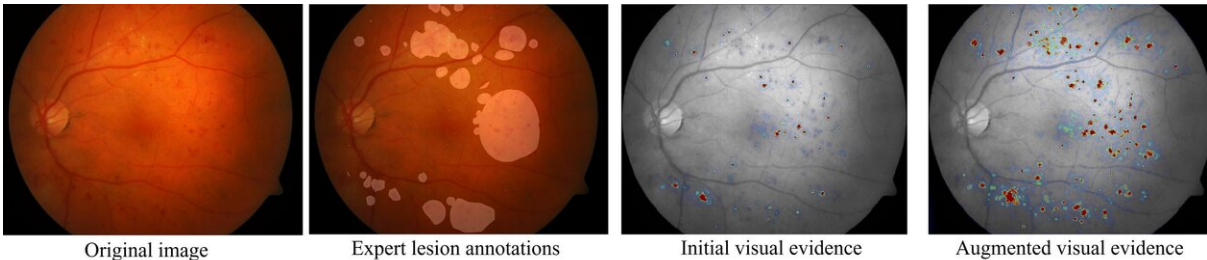


Towards an AI diagnosis like the doctor's

June 24 2020



This series shows the four different stages of the same eye scan described in this article. From left to right: the original image; with highlights of anomalies by human experts; with highlights of anomalies by one scan by an AI system; with highlights of anomalies made by an iterative series of scans by an AI system. Note that the iterative process yields a more complete overview of the anomalies present than the single assessment. Credit: Cristina González-Gonzalo

Artificial intelligence (AI) is an important innovation in diagnostics, because it can quickly learn to recognize abnormalities that a doctor would also label as a disease. But the way that these systems work is often opaque, and doctors do have a better 'overall picture' when they make the diagnosis. In a new publication, researchers from Radboudumc show how they can make the AI show how it's working, as well as let it diagnose more like a doctor, thus making AI-systems more relevant to clinical practice.

Doctor vs AI

In recent years, [artificial intelligence](#) has been on the rise in the diagnosis of medical imaging. A doctor can look at an X-ray or biopsy to identify abnormalities, but this can increasingly also be done by an AI system by means of '[deep learning](#).' Such a system learns to arrive at a diagnosis on its own, and in some cases it does this just as well or better than experienced doctors.

The two major differences compared to a human doctor are, first, that AI is often not transparent in how it's analyzing the images, and, second, that these systems are quite 'lazy.' AI looks at what is needed for a particular diagnosis, and then stops. This means that a scan does not always identify all abnormalities, even if the diagnosis is correct. A doctor, especially when considering the treatment plan, looks at the big picture: What do I see? Which anomalies should be removed or treated during surgery?

AI more like the doctor

To make AI systems more attractive for the [clinical practice](#), Cristina González Gonzalo, Ph.D. candidate at the A-eye Research and Diagnostic Image Analysis Group of Radboudumc, developed a two-sided innovation for diagnostic AI. She did this based on eye scans, in which abnormalities of the retina occurred—specifically diabetic retinopathy and age-related macular degeneration. These abnormalities can be easily recognized by both a doctor and AI. But they are also abnormalities that often occur in groups. A classic AI would diagnose one or a few spots and stop the analysis. In the process developed by González Gonzalo however, the AI goes through the picture over and over again, learning to ignore the places it has already passed, thus discovering new ones. Moreover, the AI also shows which areas of the eye scan it deemed suspicious, therefore making the diagnostic process transparent.

An iterative process

A basic AI could come up with a diagnosis based on one assessment of the eye scan, and thanks to the first contribution by González Gonzalo, it can show how it arrived at that diagnosis. This visual explanation shows that the system is indeed lazy—stopping the analysis after it has obtained just enough information to make a diagnosis. That's why she also made the process iterative in an innovative way, forcing the AI to look harder and create more of a 'complete picture' that radiologists would have.

How did the system learn to look at the same eye scan with 'fresh eyes'? The system ignored the familiar parts by digitally filling in the abnormalities already found using healthy tissue from around the abnormality. The results of all the assessment rounds are then added together and that produces the final [diagnosis](#). In the study, this approach improved the sensitivity of the detection of diabetic retinopathy and age-related macular degeneration by 11.2+/-2.0% per image. What this project proves is that it's possible to have an AI system assess images more like a doctor, as well as make transparent how it's doing it. This might help these systems become easier to trust and thus to be adopted by radiologists.

More information: Cristina Gonzalez-Gonzalo et al, Iterative augmentation of visual evidence for weakly-supervised lesion localization in deep interpretability frameworks: application to color fundus images, *IEEE Transactions on Medical Imaging* (2020). [DOI: 10.1109/TMI.2020.2994463](https://doi.org/10.1109/TMI.2020.2994463)

Provided by Radboud University

Citation: Towards an AI diagnosis like the doctor's (2020, June 24) retrieved 27 April 2024 from <https://medicalxpress.com/news/2020-06-ai-diagnosis-doctor.html>

This document is subject to copyright. Apart from any fair dealing for the purpose of private study or research, no part may be reproduced without the written permission. The content is provided for information purposes only.