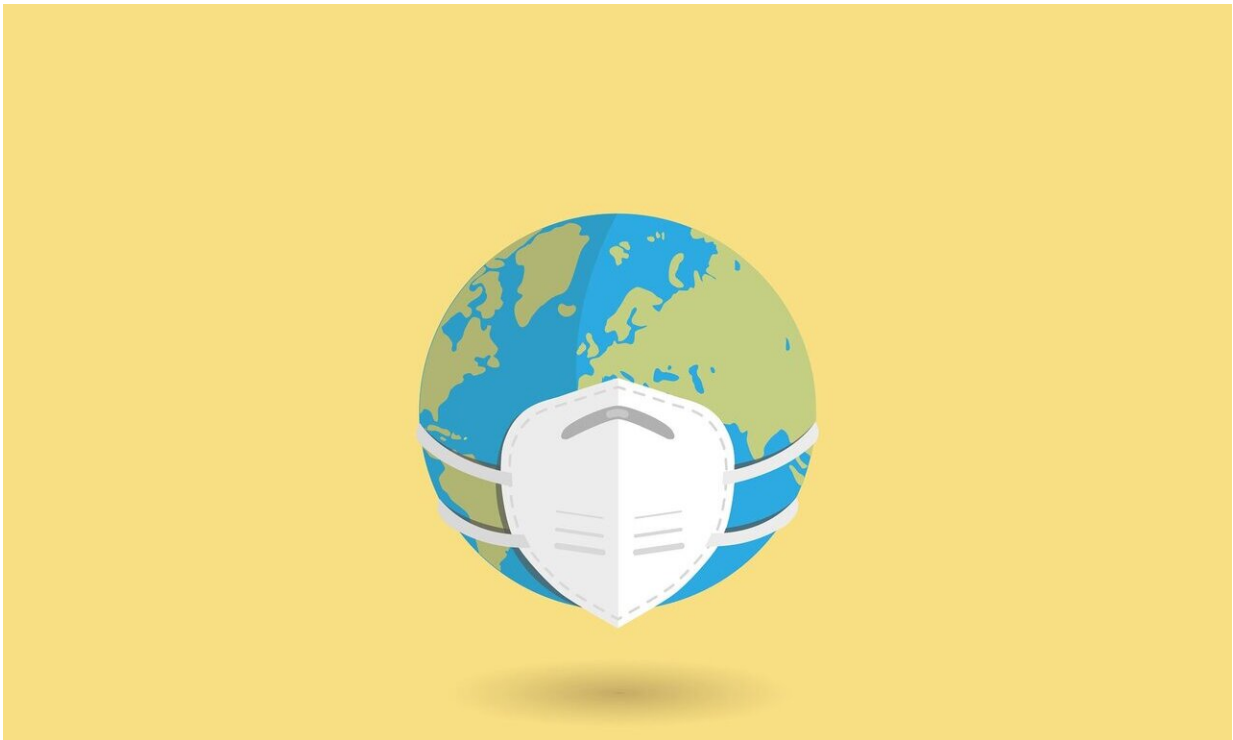


Beijing schools closed again as city finds 31 more virus cases

June 17 2020



Credit: Pixabay/CC0 Public Domain

Beijing shut all its schools again on Wednesday as the city reported 31 new coronavirus cases, with authorities in the Chinese capital rushing to curb an outbreak linked to a wholesale food market.

The new cases have raised fears of a second wave of infections as China

had largely brought its domestic outbreak under control.

City authorities on Tuesday had also announced a travel ban for residents of "medium- or high-risk" areas of the [city](#), while requiring other residents to take [nucleic acid tests](#) in order to leave the capital.

Meanwhile, all schools—which had mostly reopened—were ordered to close again and return to online classes.

"The epidemic situation in the capital is extremely severe," Beijing city spokesman Xu Hejian warned at a press conference Tuesday.

Tens of thousands of people in the city linked to the virus cluster—believed to have started in the capital's sprawling Xinfadi wholesale food market—are being tested for the virus, with almost 30 residential compounds in the city now under lockdown.

Beijing has now reported 137 infections over the last six days, with six new asymptomatic cases and three suspected cases on Wednesday, according to the city's health commission.

An additional two domestic cases, one in neighbouring Hebei province and another in Zhejiang, were reported by national authorities on Wednesday, while there were 11 imported cases.

© 2020 AFP

Citation: Beijing schools closed again as city finds 31 more virus cases (2020, June 17) retrieved 20 March 2024 from

<https://medicalxpress.com/news/2020-06-beijing-schools-city-virus-cases.html>

This document is subject to copyright. Apart from any fair dealing for the purpose of private study or research, no part may be reproduced without the written permission. The content is provided for information purposes only.
