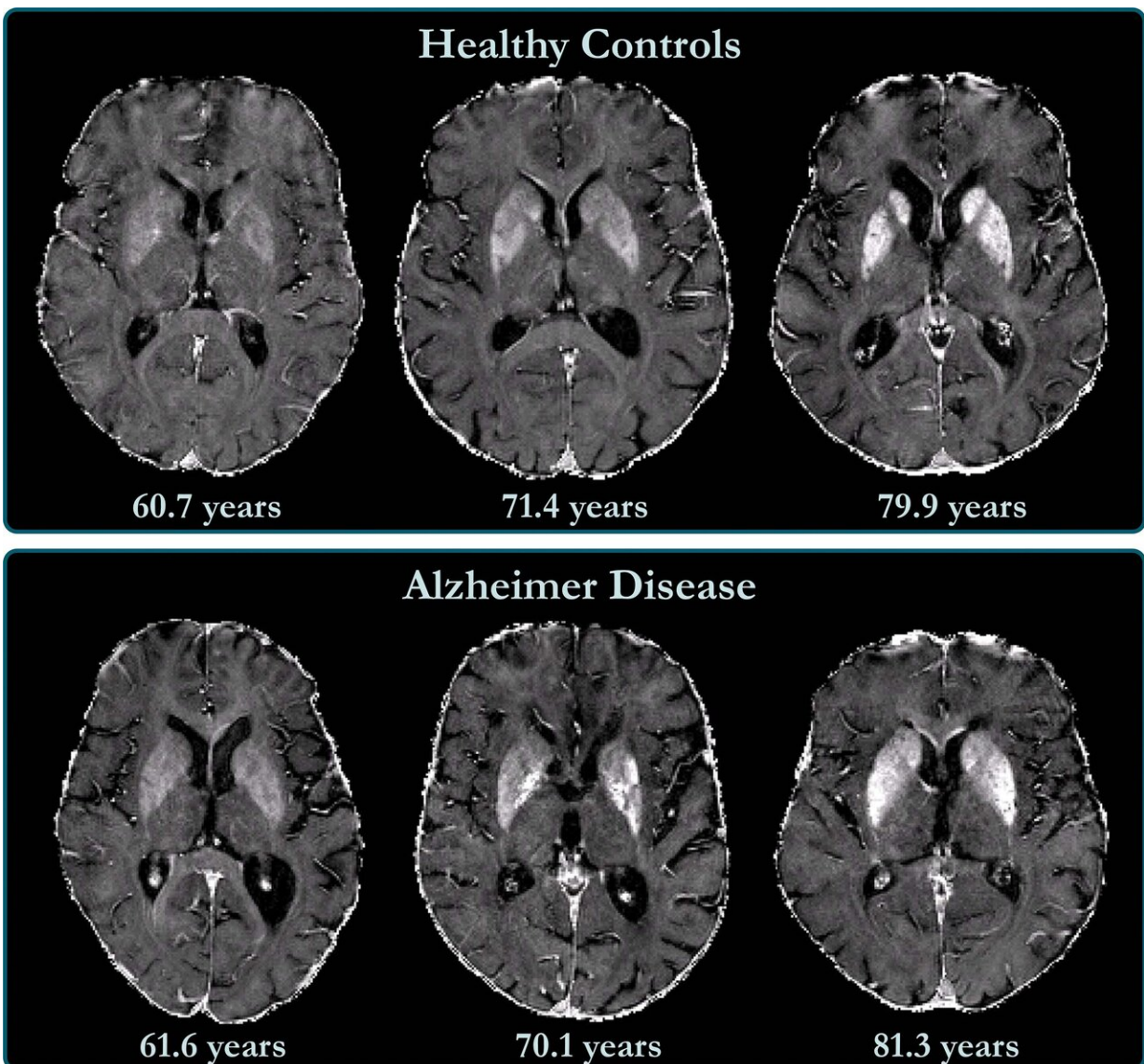


# Brain iron accumulation linked to cognitive decline in Alzheimer's patients

June 30 2020



R2\* maps of healthy control participants and participants with Alzheimer

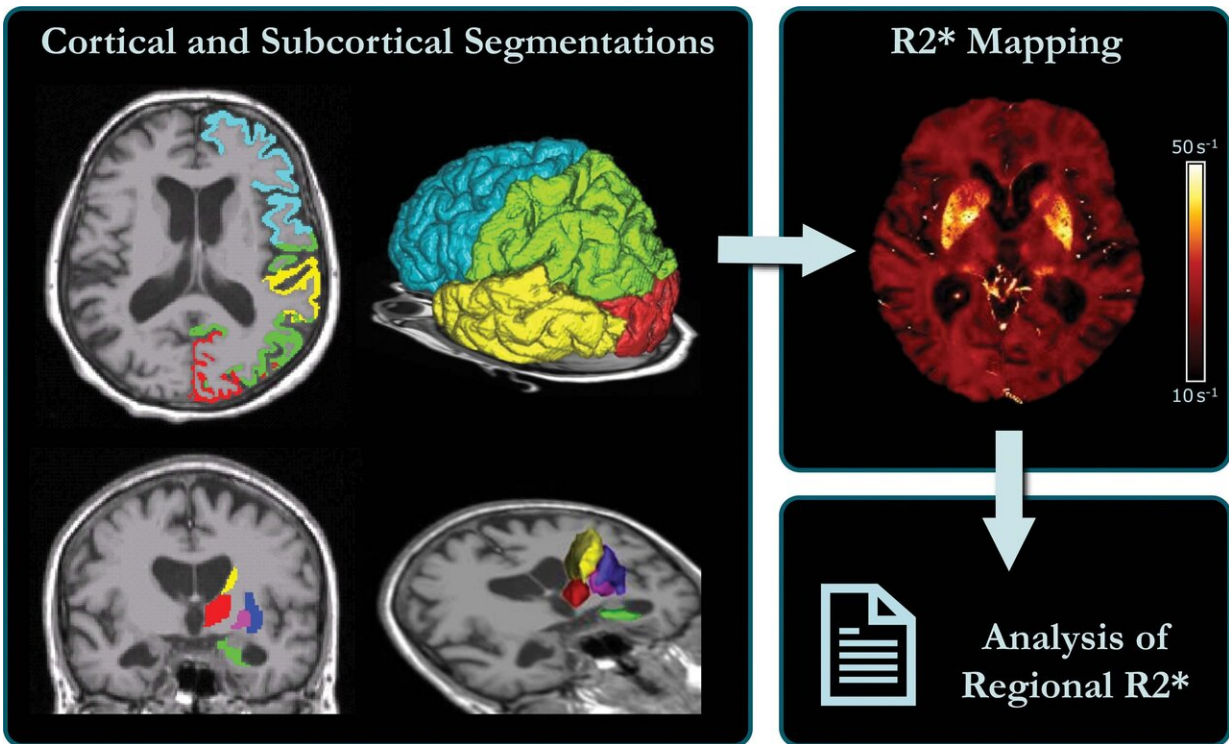
disease. R2? maps are windowed between 10 and 50 sec<sup>21</sup>. Differences in iron concentration in basal ganglia are too small to allow visual separation between patients with Alzheimer disease and control participants, and iron levels strongly depend on anatomic structure and subject age. Credit: Radiological Society of North America

Researchers using MRI have found that iron accumulation in the outer layer of the brain is associated with cognitive deterioration in people with Alzheimer's disease, according to a study published in the journal *Radiology*.

Alzheimer's disease is a progressive type of dementia that impairs and eventually destroys memory and other brain functions. There is no cure, although some treatments are thought to slow the progression.

Previous research has linked abnormally high levels of iron in the brain with Alzheimer's disease. Iron deposition correlates with amyloid beta, a protein that clumps together in the brains of people with Alzheimer's disease to form plaques that collect between neurons and disrupt cell function. Associations have also been found between iron and [neurofibrillary tangles](#), abnormal accumulations of a protein called tau that collect inside neurons. These tangles block the neuron's transport system, which harms the communication between neurons.

It is known that deep gray matter structures of patients with Alzheimer's disease contain higher brain iron concentrations. Less is known about the neocortex, the deeply grooved outer layer of the brain that is involved with language, conscious thought and other important functions. The neocortex is challenging to assess by MRI, as the anatomy of the area makes MRI prone to distortions, signal decays and artifacts.



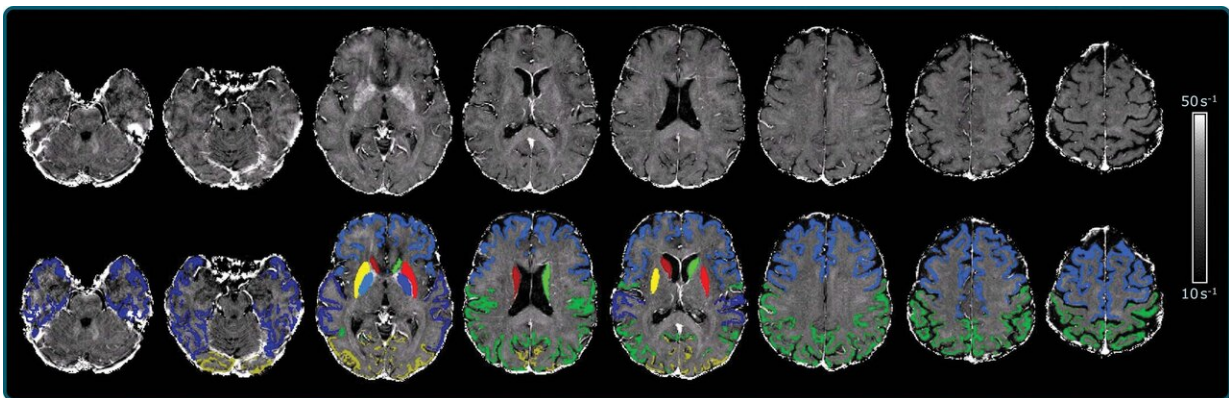
Schematic representation of MRI processing. Left: FreeSurfer-derived cortical and subcortical segmentations overlaid on a T1-weighted scan were affinely registered into R2\* space. Right: R2\* map corrected for macroscopic field inhomogeneities, where median R2\* values were calculated for each region and then used for further statistical analyses. Credit: Radiological Society of North America

"The best solution to minimize these artifacts would be using ultra-high-resolution scans," said study coauthor Reinhold Schmidt, M.D., professor of neurology and chairman of the Department of Neurology at the Medical University of Graz in Graz, Austria. "However, in the [clinical setting](#), scan time is a limiting factor, and a compromise has to be found."

For the new study, Dr. Schmidt and colleagues developed an approach using a 3T MRI scanner that allowed the best tradeoff between resolution and scan time, along with postprocessing to correct the influence of the distortions.

They used the MRI system to investigate baseline levels of brain iron in 100 individuals with Alzheimer's disease and 100 healthy controls. Of the 100 participants with Alzheimer's disease, 56 had subsequent neuropsychological testing and brain MRI at a mean follow-up of 17 months.

The technique enabled the researchers to create a map of brain iron, determining iron levels in parts of the brain like the [temporal lobes](#), or the areas of the brain lying underneath the temples, and the occipital lobes in the back of the head.



R2\* map of a study participant superimposed with cortical and subcortical segmentations. Credit: Radiological Society of North America

"We found indications of higher iron deposition in the deep gray matter



and total neocortex, and regionally in temporal and occipital lobes, in Alzheimer's disease patients compared with age-matched healthy individuals," Dr. Schmidt said.

The brain iron accumulation was associated with cognitive deterioration independently of brain volume loss. Changes in iron levels over time in the temporal lobes correlated with cognitive decline in individuals with Alzheimer's disease.

"These results are all in keeping with the view that high concentrations of iron significantly promote [amyloid beta](#) deposition and neurotoxicity in Alzheimer's disease," Dr. Schmidt said.

The results point to a potential role in Alzheimer's disease treatment for drugs that reduce the iron burden in the [brain](#). These drugs, known as chelators, can remove excess iron from the body.

"Our study provides support for the hypothesis of impaired iron homeostasis in Alzheimer's disease and indicates that the use of iron chelators in clinical trials might be a promising treatment target," Dr. Schmidt said. "MRI-based [iron](#) mapping could be used as a biomarker for Alzheimer's [disease](#) prediction and as a tool to monitor treatment response in therapeutic studies."

**More information:** "Cross-sectional and Longitudinal Assessment of Brain Iron Level in Alzheimer Disease using 3-T MRI" *Radiology*, 2020.

Provided by Radiological Society of North America

Citation: Brain iron accumulation linked to cognitive decline in Alzheimer's patients (2020, June 30) retrieved 6 May 2024 from <https://medicalxpress.com/news/2020-06-brain-iron->

[accumulation-linked-cognitive.html](https://www.medicalxpress.com/accumulation-linked-cognitive.html)

This document is subject to copyright. Apart from any fair dealing for the purpose of private study or research, no part may be reproduced without the written permission. The content is provided for information purposes only.