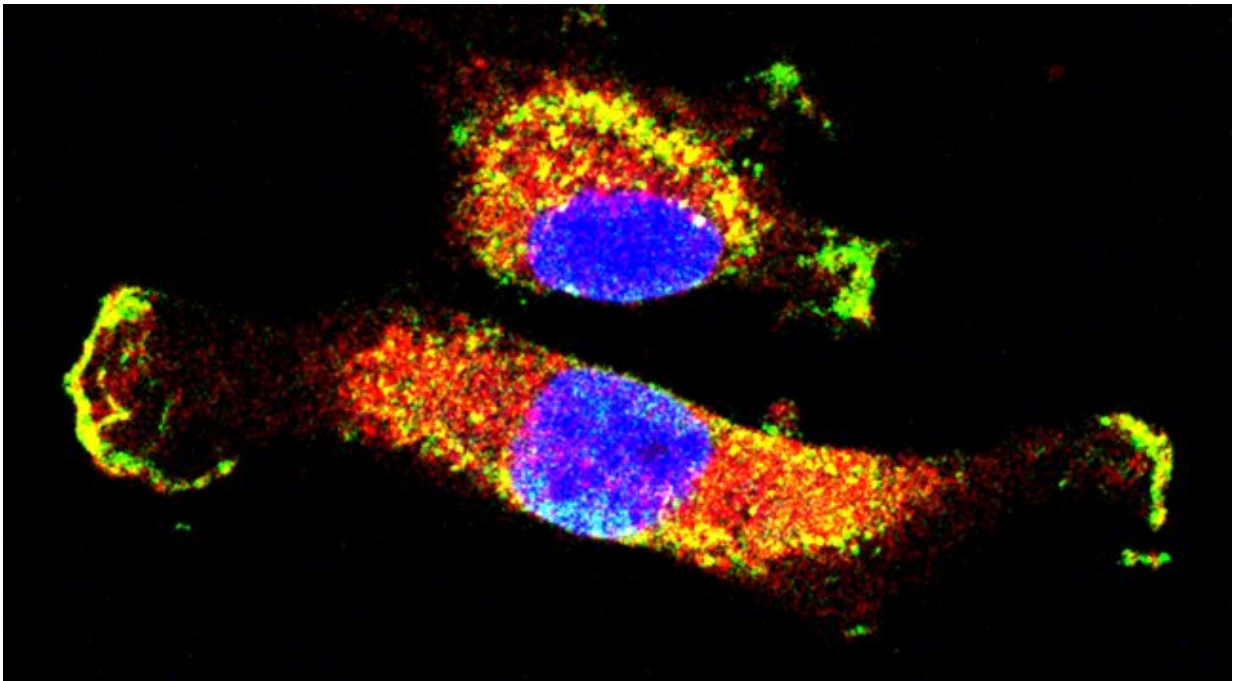


Unravelling the circuitry that controls cancer growth and spread

June 23 2020



Microscopy image of two cells in which a cancer-relevant mutated MET has driven the interaction (yellow) of Rac1 (green) and mTOR (red) inside the cells and at the cell boundaries. The cell nuclei (DNA) are in blue. Credit: Queen Mary University of London

Research led by Queen Mary University of London has revealed novel insights into the molecular circuitry controlling cancer cell growth and spread. The findings highlight new pathways involved in these key

processes of cancer progression that may represent targets for therapies.

A complex communication network

The study, published today in *Science Signaling*, set out to uncover how a protein called MET drives cancer progression. Research has shown faulty or mutated versions of MET to be involved in cancer cell growth and spread in a variety of cancer types; however, the precise mechanisms by which it controls these processes are unknown.

MET belongs to a group of proteins called receptor tyrosine kinases (RTKs), which are key regulatory proteins involved in a variety of signaling pathways that control normal cellular processes. Abnormal changes to RTKs are implicated in the development and progression of many types of cancer, making them a popular target for [cancer treatment](#).

The team, made up of researchers from the BCI, led by Dr. Stéphanie Kermorgant, and The Institute of Cancer Research, London, including Dr. Alexia Hervieu and Dr. Paul Clarke, looked at [cells](#) and preclinical models in which MET was mutated. They found that the protein activated two distinct pathways to drive cancer cell growth and migration, by interacting with other key molecules that help MET to carry out these functions.

One molecule identified as a key player in these MET-driven processes was Rac1. It is widely understood that Rac1 is involved in cancer cell migration; however, the team found Rac1 to also be critical in driving [cancer cell growth](#), via interaction with another protein called mTOR. This interaction occurs inside the cells (in structures called endosomes), followed by a relocation of the two molecules to the cell boundary—an unusual place for mTOR to be found. In a separate pathway, MET also communicates with another molecule, PI3K, to drive cell migration.



Dr Alexia Hervieu (left) and Dr Stephanie Kermorgant (right) in the laboratory at Barts Cancer Institute, Queen Mary University of London. Credit: Queen Mary University of London

First author of the study Dr. Hervieu, who did her Ph.D. under Dr. Kermorgant's supervision and is currently a postdoctoral researcher at The Institute of Cancer Research (ICR), said: "Grasping how MET controls cell behavior in cancer is a crucial step towards improving treatment. The unexpected discovery of Rac1's role in this context expands our understanding of how MET deregulates cells and opens new opportunities for [cancer research](#)."

The research was primarily funded by Cancer Research UK and the

Medical Research Council, with additional funding from the Rosetrees Trust, Breast Cancer Now and Pancreatic Cancer Research Fund.

Overcoming drug resistance

Cancer cell migration is key for metastasis—the spread of cancer cells from one site in the body to another. Metastatic disease is the leading cause of cancer mortality; however, there is currently no cure.

Understanding the processes that drive metastasis and finding ways to stop these is vital for the development of more efficacious cancer treatments.

Drugs that target MET are being tested in clinical trials; however, patients often develop resistance to these drugs as the cancer can learn to activate the MET-driven pathways in other ways. The insights gained from this study may pave the way for the development of new treatment regimens; if drugs to target MET are used in combination with drugs that inhibit mTOR and PI3K, treatments may be effective for longer.

Interestingly, drugs that inhibit mTOR and PI3K at the same time have recently been developed.

Dr. Kermorgant said: "We are very excited with this discovery which suggests that MET, a major cancer target, may be co-targeted with existing drugs against two other major targets, PI3K and mTOR. This could be tested in clinical trials in a near future."

This study refines the current understanding of how MET controls the signaling pathways involved in cancer growth and spread, and identifies the key players involved in these processes. Targeting these molecules in combination may offer more efficacious treatment outcomes for patients with [cancer](#).

More information: A PI3K- and GTPase-independent Rac1-mTOR

mechanism mediates MET-driven anchorage-independent cell growth but not migration, *Science Signaling*, 23 Jun 2020: Vol. 13, Issue 637, eaba8627, [DOI: 10.1126/scisignal.aba8627](https://doi.org/10.1126/scisignal.aba8627) , stke.sciencemag.org/content/13/637/eaba8627

Provided by Queen Mary, University of London

Citation: Unravelling the circuitry that controls cancer growth and spread (2020, June 23)
retrieved 26 April 2024 from
<https://medicalxpress.com/news/2020-06-unravelling-circuitry-cancer-growth.html>

This document is subject to copyright. Apart from any fair dealing for the purpose of private study or research, no part may be reproduced without the written permission. The content is provided for information purposes only.