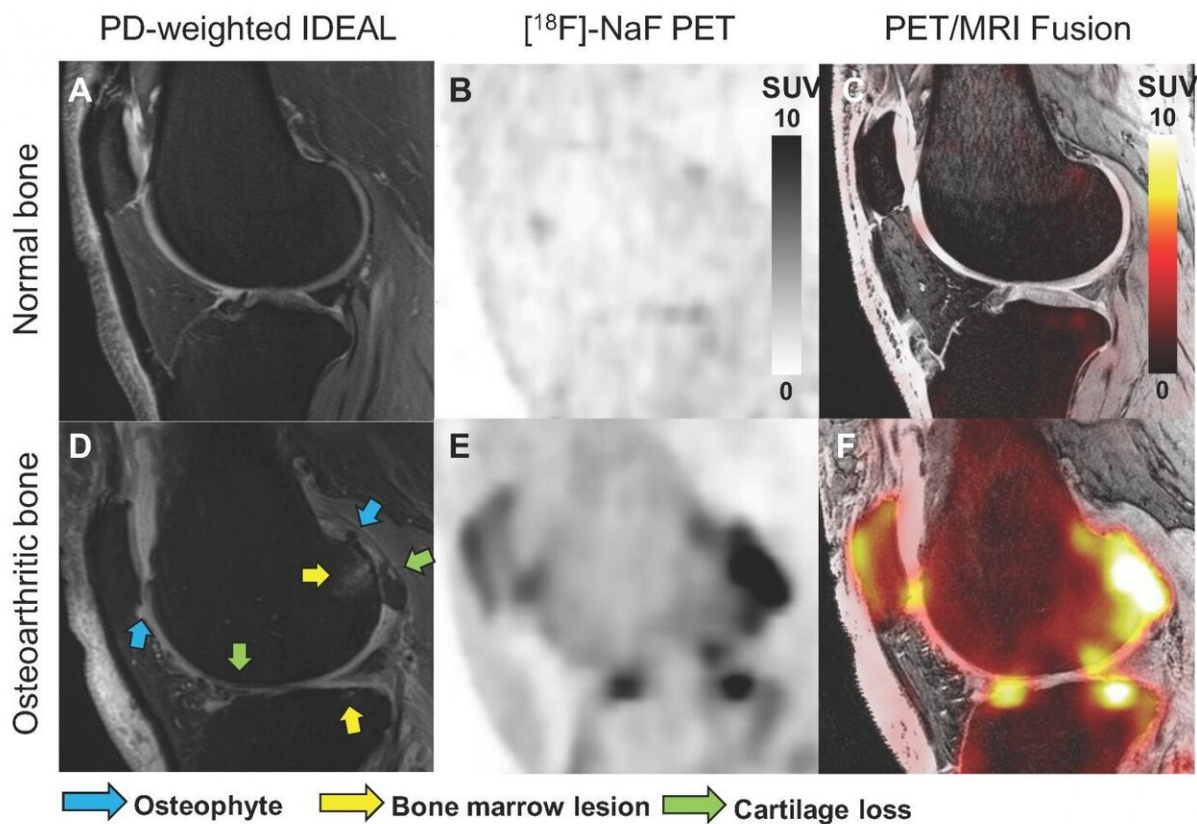


Novel bone imaging approach provides insights into the progression of knee osteoarthritis

July 13 2020



Representative structural MRI image (PD-weighted IDEAL image, A and D), $[^{18}\text{F}]\text{NaF}$ PET SUV images (B and E), and PET/MR fusion images (C and F) of a healthy knee and a knee with osteoarthritis. MOAKS scoring of MR images was used to identify the size of osteophytes, bone marrow lesions and cartilage loss within various bone regions in the patella, tibia and femur. Arrows highlight bone regions with osteophytes in blue, bone marrow lesions in yellow, and

cartilage loss in green. Credit: LE Watkins, et al., Stanford University, CA.

A new approach to functional bone imaging has established that bone metabolism is abnormally elevated in patients with knee osteoarthritis. This physiological information provides a new functional measure to help assess degeneration of the knee joint. The research was presented at the Society of Nuclear Medicine and Molecular Imaging 2020 Virtual Annual Meeting, July 11-14.

Osteoarthritis, the most common joint disorder in the United States, affects more than 32.5 million adults. It is marked by degradation and loss of soft tissues, such as cartilage, and development of bone marrow lesions and osteophytes. Osteoarthritis occurs most frequently in the hands, hips and knees and results in reduced productivity and quality of life.

"Osteoarthritis is not well understood, in part because we lack the tools to objectively evaluate early and reversible changes in key tissues," noted Lauren Watkins, MS, a researcher at the Stanford University Imaging of Musculoskeletal Function Group in Stanford, California. "While many MRI methods have been developed for assessment of early degenerative changes in cartilage, functional imaging of bone in the joint remains a major challenge."

To evaluate the relationship between structural and physiological changes in [knee osteoarthritis](#), researchers utilized [positron emission tomography](#) (PET)/MRI with ^{18}F NaF to image both knees of 12 subjects. Five subjects were scanned twice, with at least five days between visits, to assess repeatability of the technique. MRI Osteoarthritis Knee Score (MOAKS) assessment of each knee was performed by a trained musculoskeletal radiologist, and dynamic PET

data were used to calculate the rates of bone perfusion, tissue clearance and mineralization, as well as tracer extraction fraction and total bone uptake rate. Kinetic modeling was performed for regions of interest representing the subchondral bone of the patella, medial and lateral tibia, and anterior, central, and posterior regions of the medial and lateral femur.

The knees with MOAKS findings were divided into regions of cartilage loss, bone marrow lesions and osteophytes and were analyzed along with the kinetic parameters derived from PET data. Abnormal [bone metabolism](#) in regions with bone marrow lesions, osteophytes, and adjacent cartilage lesions was found to be strongly associated with greater bone perfusion rates as compared to bone that appeared normal on MRI. Additionally, strong spatial relationships between bone metabolic abnormalities and changes in overlying cartilage were noted.

"These findings show the utility and potential of PET imaging to study the role of [bone](#) physiology in degenerative joint disease," said Watkins. "This knowledge may help us understand the order of events leading to structural and functional degeneration of the [knee](#). Further, this will help us to develop and quickly evaluate new interventions that target specific metabolic pathways to give us the best chance to slow or arrest the onset and progression of [osteoarthritis](#)."

Provided by Society of Nuclear Medicine and Molecular Imaging

Citation: Novel bone imaging approach provides insights into the progression of knee osteoarthritis (2020, July 13) retrieved 7 May 2024 from <https://medicalxpress.com/news/2020-07-bone-imaging-approach-insights-knee.html>

This document is subject to copyright. Apart from any fair dealing for the purpose of private study or research, no part may be reproduced without the written permission. The content is provided for information purposes only.