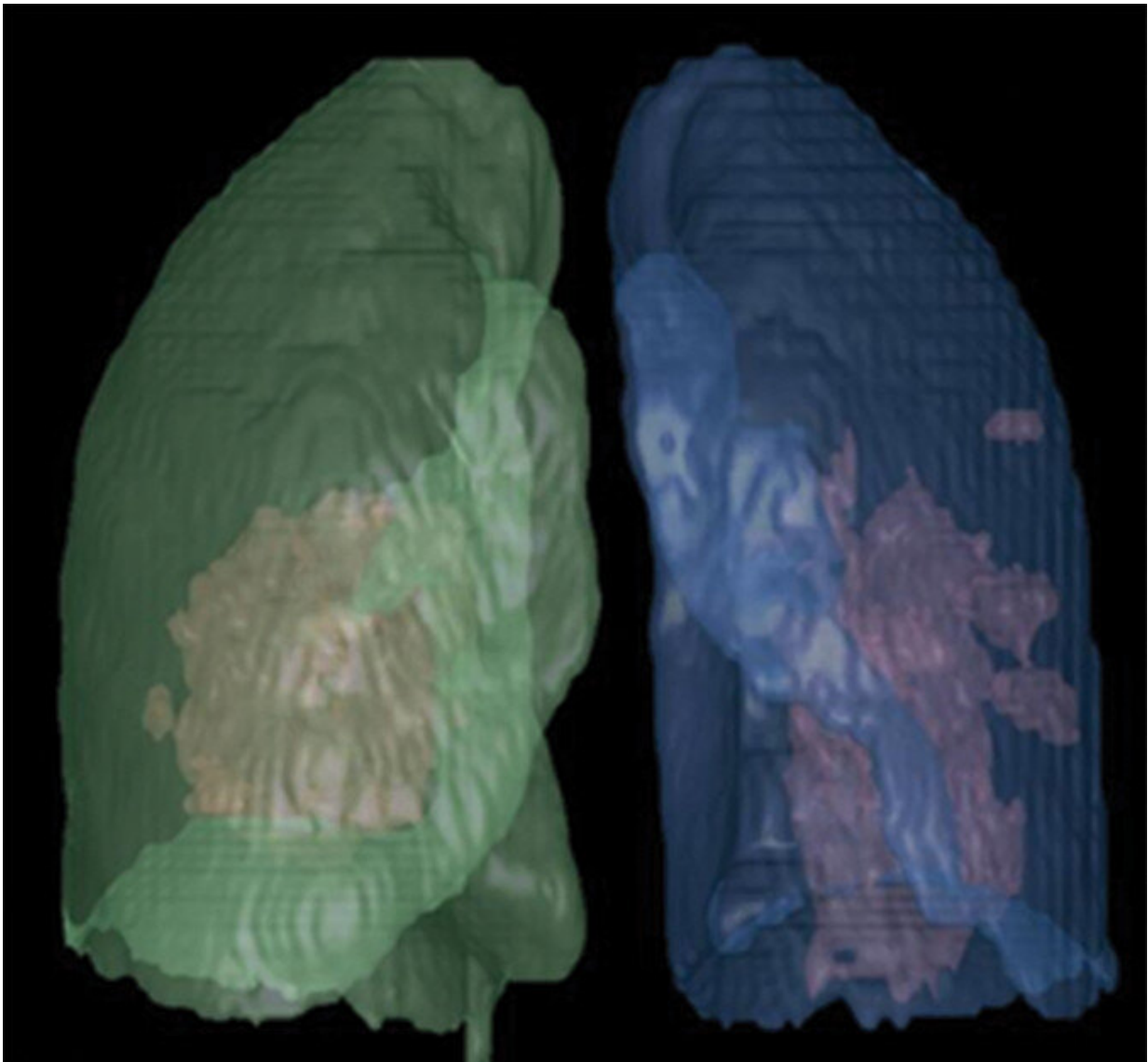


CT of COVID-19 versus CT of influenza virus pneumonia

July 9 2020



Artificial intelligence (AI)-assisted software was used to identify inflammatory

tissues in lung and automatically segment inflammatory lesions. Three-dimensional image shows regions of COVID-19 pneumonia in lung through AI postprocessing. Credit: *American Journal of Roentgenology* (AJR)

An open-access *American Journal of Roentgenology* (AJR) article investigating the differences in CT findings between coronavirus disease (COVID-19) pneumonia and influenza virus pneumonia found that most lesions from COVID-19 were located in the peripheral zone and close to the pleura, whereas influenza virus was more prone to show mucoid impaction and pleural effusion.

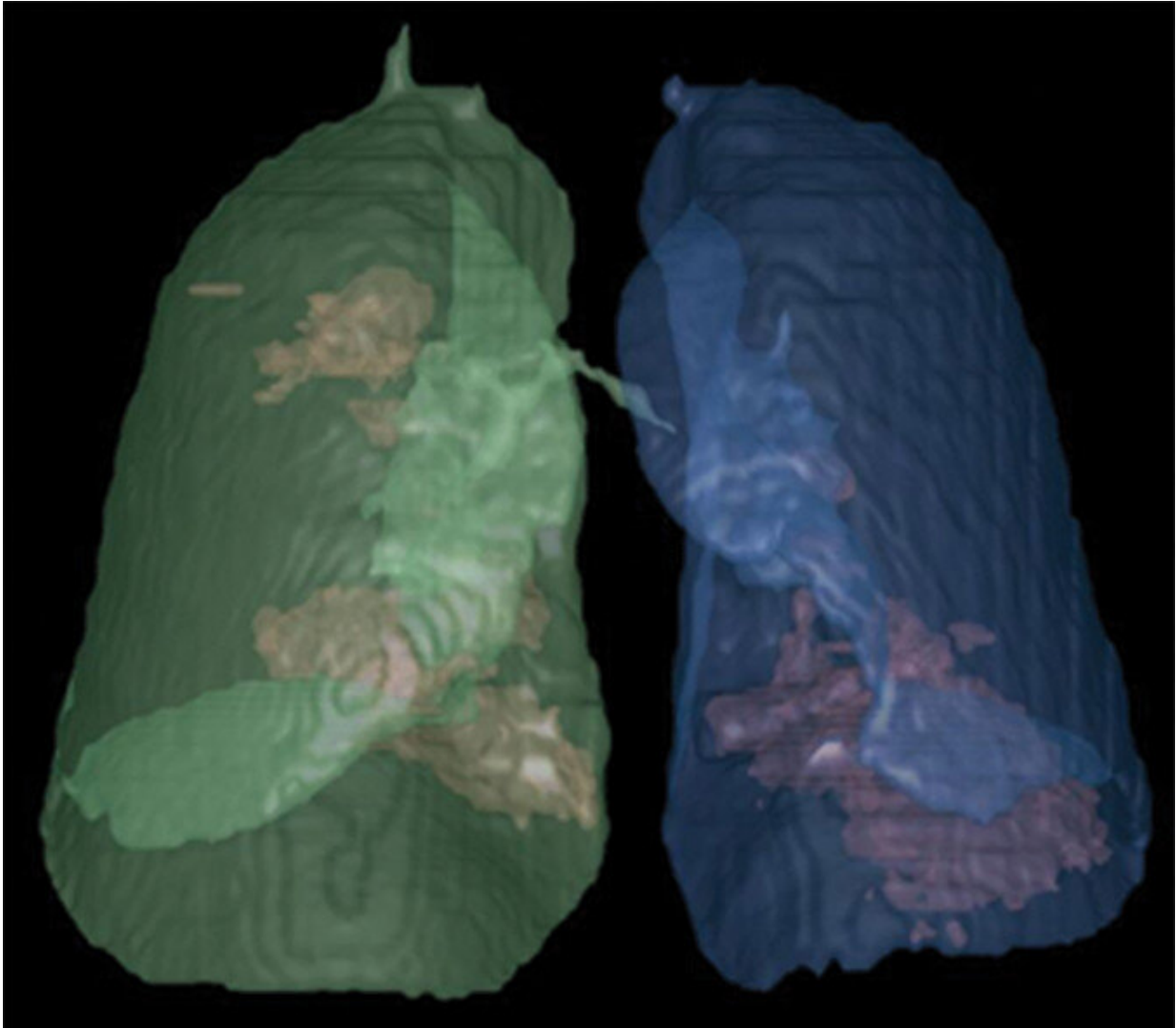
"However," lead author Liaoyi Lin of China's First Affiliated Hospital of Wenzhou Medical University cautioned, "differentiating between COVID-19 pneumonia and influenza virus pneumonia in [clinical practice](#) remains difficult."

A total of 97 patients (49 women, 48 men) were enrolled in this study. Of them, 52 patients (29 men, 23 women; age range, 21-73 years) had COVID-19 pneumonia; 45 patients (26 women, 19 men; age range, 15-76 years) had influenza virus pneumonia (28, influenza A; 17, influenza B). All patients had positive nucleic acid testing results for the respective viruses, as well as complete clinical data and CT images.

According to Lin and colleagues: "Between the group of patients with COVID-19 pneumonia and the group of patients with influenza virus [pneumonia](#), the largest lesion close to the pleura (i.e., no pulmonary parenchyma between the lesion and the pleura), mucoid impaction, presence of [pleural effusion](#), and axial distribution showed statistical difference (p

Meanwhile, Lin et al. noted that the properties of the largest lesion,

presence of ground-glass opacities, consolidation, mosaic attenuation, bronchial wall thickening, centrilobular nodules, interlobular septal thickening, crazy paving pattern, air bronchogram, unilateral or bilateral distribution, and longitudinal distribution did not show significant differences ($p > 0.05$).



Artificial intelligence (AI)-assisted software was used to automatically segment inflammatory lesions. Three-dimensional image shows regions of influenza virus pneumonia in lung through AI postprocessing. Credit: *American Journal of Roentgenology* (AJR)

Additionally, the authors observed no [significant difference](#) ($p > 0.05$) in CT score, length of the largest lesion, mean density, volume, or mass of the [lesions](#) between the two groups.

Because the CT manifestations of COVID-19 and [influenza virus](#) so often overlap, "even with the characteristics evaluated using AI software," Lin et al. wrote, "no significant differences were detected."

Thus, the authors of this *AJR* article concluded that the more important role of CT during the present pandemic is in finding lesions and evaluating the effects of treatment.

More information: Liaoyi Lin et al, CT Manifestations of Coronavirus Disease (COVID-19) Pneumonia and Influenza Virus Pneumonia: A Comparative Study, *American Journal of Roentgenology* (2020). [DOI: 10.2214/AJR.20.23304](https://doi.org/10.2214/AJR.20.23304)

Provided by American Roentgen Ray Society

Citation: CT of COVID-19 versus CT of influenza virus pneumonia (2020, July 9) retrieved 26 April 2024 from <https://medicalxpress.com/news/2020-07-ct-covid-influenza-virus-pneumonia.html>

<p>This document is subject to copyright. Apart from any fair dealing for the purpose of private study or research, no part may be reproduced without the written permission. The content is provided for information purposes only.</p>
--