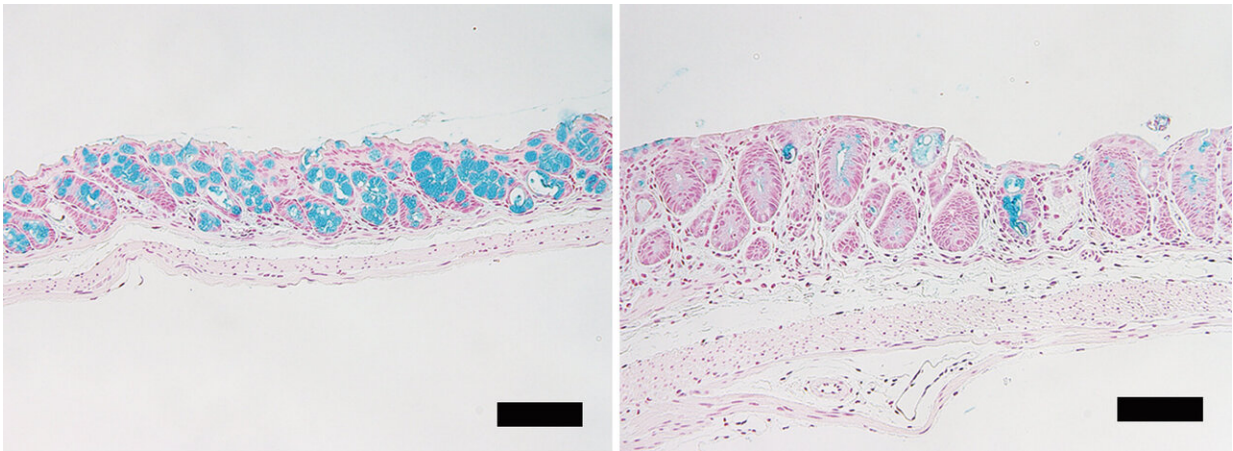


Loss of intestinal goblet cells causes fatal disease after stem cell transplantation

July 1 2020



In mice large intestine, the goblet cells (blue) are significantly reduced in number after allogeneic bone marrow transplantation (right), comparing to a control syngeneic recipients (left). Credit: Takahide Ara et al., Science Translational Medicine, July 1, 2020

Allogeneic stem cell transplantation can cause a loss of protective goblet cells from the colon's inner lining, which can be fatal. But boosting those cells beforehand could improve the outcome.

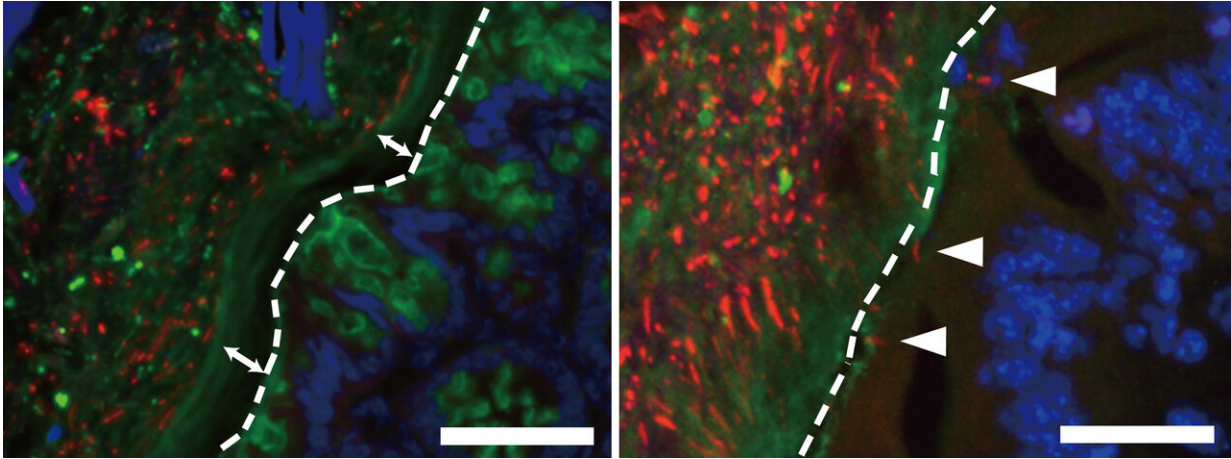
A significant loss of the colon [cells](#) following a stem cell transplantation leads to bacterial invasion of the intestinal mucosa, affecting recipient prognosis. An injection with a growth factor of goblet cells prior to the transplantation could improve the outcome. This finding, by Hokkaido

University researchers and colleagues, was published in the journal *Science Translational Medicine*.

Allogeneic hematopoietic stem cell transplantation involves transferring immune and haematopoietic system from a healthy donor to the recipient to treat hematological disorders such as leukemia and lymphoma. However, some patients develop a donor immunity-mediated disease known as graft-versus-host-disease following the transplantation. The disease can be fatal in some cases, limiting widespread use of the treatment.

Hokkaido University hematologists Daigo Hashimoto, Takanori Teshima, and colleagues wanted to further understand what happens in the intestine during graft-versus-host-disease at the cellular level.

Through studies on mice, they found allogeneic haematopoietic stem cell transplantation can lead to a significant reduction in a type of epithelial cell in the colon's inner lining called a goblet cell. These cells produce the protective [mucus](#) layer that prevents intestinal bacteria from crossing into the intestinal tissue and blood stream. The scientists found the reduction in mature goblet cells following transplantation disrupted the mucus layer they formed, leading to bacterial invasion of the intestinal tissue.



The inner mucus layer (left, arrows) seen in normal mice became significantly thinner after allogeneic transplantation (right). Bacterial invasion (red) to the intestinal tissue was also observed (right, arrows). Dashed lines indicate the border between the inner mucus layer and epithelial cells. Credit: Takahide Ara et al., *Science Translational Medicine*, July 1, 2020

However, the number of goblet cells significantly increased in the colon after the scientists had injected mice with interleukin-25 (IL-25), a growth factor for goblet cells, for six days prior to transplantation. In the mice with IL-25 injection, significantly fewer bacteria were able to invade the intestinal mucosa after the allogeneic stem cell transplantation.

Further investigation revealed that an anti-microbial molecule called Lypd8, which is secreted by another type of colon cell and resides in the mucus, is lost in mice with disrupted inner mucus layer in graft-versus-host-disease. They also found that Lypd8 is necessary for IL-25 to have its protective effect. "These together show that the goblet cells inhibit bacterial invasion by maintaining the mucus layer where the anti-microbial molecule resides."

The researchers then studied colonic biopsies taken from [human patients](#) who had received this type of transplantation. Goblet cells were specifically damaged in patients who developed graft-versus-host-disease, and severe goblet cell loss was associated with a poor survival following the transplantation.

"We found that the intestinal goblet cells maintain the mucus layer that contains antimicrobial molecules, therefore preventing invasion by intestinal bacteria. So, administration of IL-25 to protect patients' goblet cells could turn out to be a successful strategy against graft-versus-host-disease after allogeneic hematopoietic stem cell transplantation," said Daigo Hashimoto. "Counting goblet cells using non-invasive methods, like confocal laser endomicroscopy, could also be used for diagnosing and monitoring graft-versus-host-disease," Takanori Teshima added.

More information: "Intestinal goblet cells protect against GVHD after allogeneic stem cell transplantation via Lypd8" *Science Translational Medicine* (2020). [stm.sciencemag.org/lookup/doi/ ... scitranslmed.aaw0720](https://stm.sciencemag.org/lookup/doi/10.1126/scitranslmed.aaw0720)

Provided by Hokkaido University

Citation: Loss of intestinal goblet cells causes fatal disease after stem cell transplantation (2020, July 1) retrieved 3 May 2024 from <https://medicalxpress.com/news/2020-07-loss-intestinal-goblet-cells-fatal.html>

This document is subject to copyright. Apart from any fair dealing for the purpose of private study or research, no part may be reproduced without the written permission. The content is provided for information purposes only.