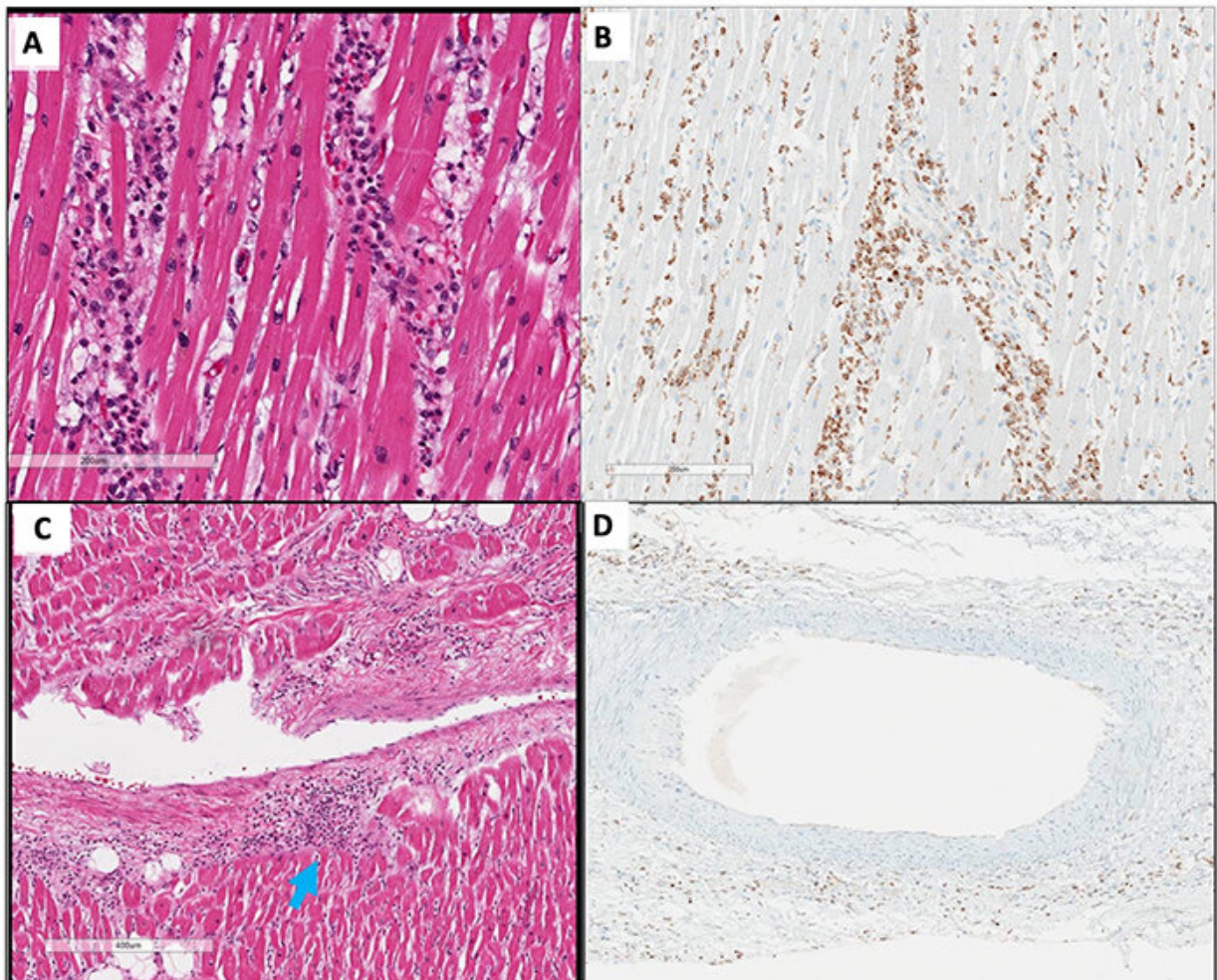


LSU health pathologists publish first report on likely MIS involving the heart

July 30 2020



Credit: Louisiana State University

A team of LSU Health New Orleans pathologists published what is believed to be the first case report on pathologic findings of vasculitis of the small vessels of the heart, which likely represents multisystem inflammatory syndrome (MIS). The report was published online in the *Annals of Internal Medicine*.

The LSU Health New Orleans pathologists identified microscopic evidence of inflammation involving the small cardiac vessels during the autopsy of a patient who died weeks after initially recovering from COVID. MIS is a [severe illness](#) featuring severe inflammation of multiple organs that occurs after the resolution of COVID symptoms. Similar to Kawasaki disease, MIS cases have been increasingly reported among children and young adults. Although [vascular damage](#) seems to be a component of both diseases, the pathologic features of MIS have not yet been described.

"We also found new pulmonary blood clots in a background of otherwise reparative changes in the lungs," notes Sharon Fox, MD, Ph.D., Associate Director of Research and Development in the Department of Pathology at LSU Health New Orleans School of Medicine. "These clots indicate a potential for increased clotting affecting the pulmonary blood vessels beyond the initial course of COVID-19, as well as the need for continued monitoring of laboratory markers and possible anticoagulation."

"Our report highlights the potential for serious complications due to damage to the lining of the vessels in the heart after COVID-19," adds Richard Vander Heide, MD, Ph.D., Professor and Director of Pathology Research at LSU Health New Orleans School of Medicine.

The team concludes, "Careful monitoring of laboratory markers of cardiac and systemic inflammation, as well as therapeutic intervention to target this inflammatory process, may improve patient outcomes."

Authors also include Drs. Elizabeth Rinker and Fernanda Lameira in the Department of Pathology at LSU Health New Orleans School of Medicine.

More information: Sharon E. Fox et al, Cardiac Endotheliitis and Multisystem Inflammatory Syndrome After COVID-19, *Annals of Internal Medicine* (2020). [DOI: 10.7326/L20-0882](https://doi.org/10.7326/L20-0882)

Provided by Louisiana State University

Citation: LSU health pathologists publish first report on likely MIS involving the heart (2020, July 30) retrieved 10 April 2024 from <https://medicalxpress.com/news/2020-07-lsu-health-pathologists-publish-mis.html>

<p>This document is subject to copyright. Apart from any fair dealing for the purpose of private study or research, no part may be reproduced without the written permission. The content is provided for information purposes only.</p>
--