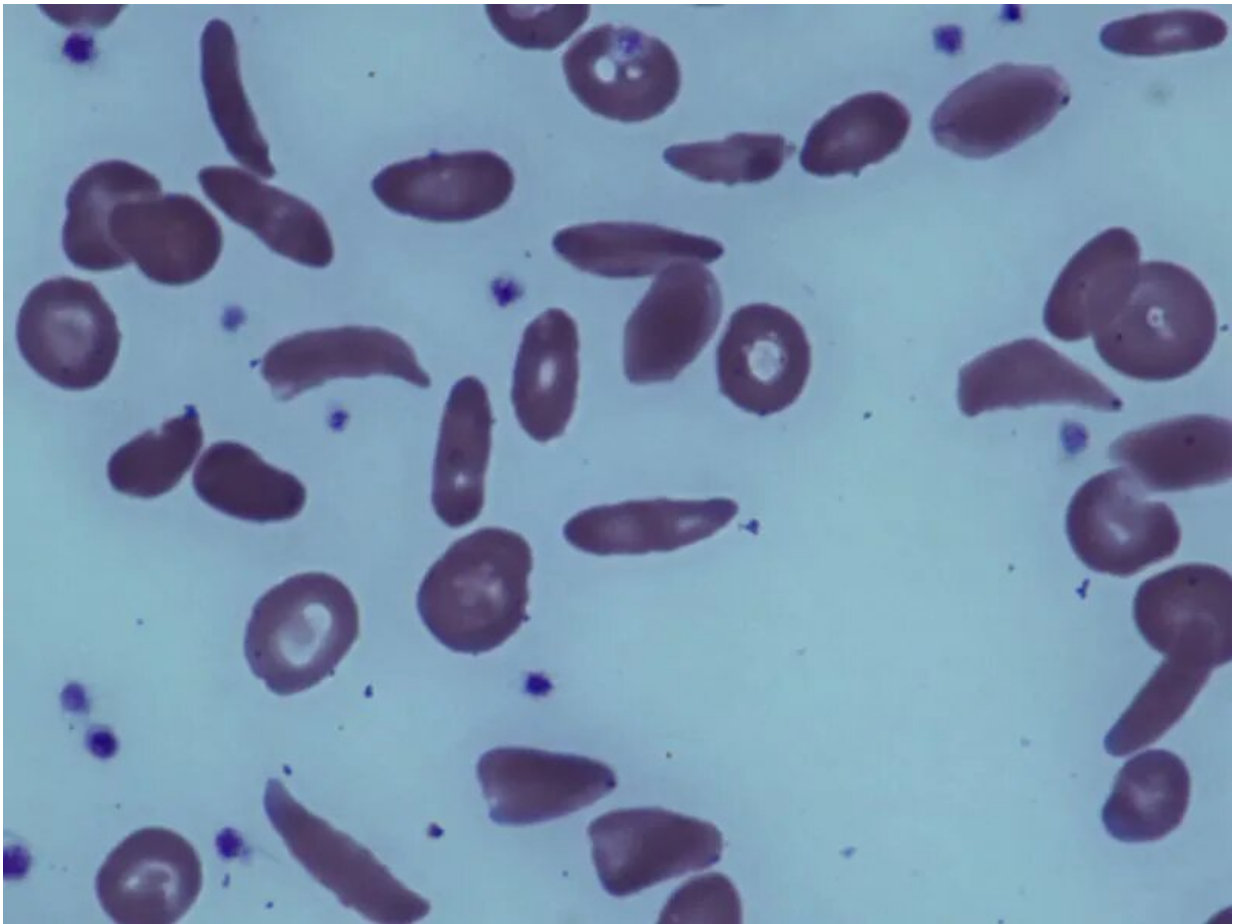


What people with sickle cell disease need to know about COVID-19

July 13 2020



(HealthDay)—People with sickle cell disease are at increased risk for

severe complications from COVID-19, an expert says.

"Many patients experience a pain crisis, also known as a vaso-occlusive crisis, early in COVID-19 infection before [respiratory symptoms](#) develop," said Dr. Jennie Hart, clinical director of pediatric hematology/oncology at Herman and Walter Samuelson Children's Hospital at Sinai in Baltimore.

COVID-19 can cause severe inflammation and lung injury. And that can have a greater impact on people with [sickle cell disease](#), a group of inherited red blood cell disorders, Hart said.

People with the disease, which most commonly affects Black people, have misshapen red cells that can get stuck and clog blood flow, inhibiting oxygen delivery, damaging blood vessels and causing inflammation.

Some conditions—including respiratory infections such as COVID-19—increase formation of sickle-shaped cells, because infections in the lungs lead to lower oxygen levels and worse inflammation.

"This increase in sickled [red blood cells](#) makes patients with sickle cell disease and COVID-19 infection particularly vulnerable to developing acute chest syndrome, a rapid and deadly lung injury," Hart said in a news release.

People with sickle cell disease should stay home unless travel is essential, according to the Sickle Cell Disease Association of America.

"Patients who can work from home are strongly encouraged to do so. Your physician can provide a letter to your employer," Hart said. Social distancing is a must, she added.

If you have sickle cell disease, call your doctor immediately if you develop a fever or [chest pain](#), have difficulty breathing, or are experiencing a pain crisis, she advised.

Take all your medications as prescribed, especially if you're taking hydroxyurea, which reduces certain complications from sickle cell disease, she added.

Stay well hydrated, wash your hands often and avoid close contact with people who have symptoms of a [respiratory infection](#), Hart said.

More information: The American Academy of Family Physicians has more on [sickle cell disease](#).

Copyright © 2020 [HealthDay](#). All rights reserved.

Citation: What people with sickle cell disease need to know about COVID-19 (2020, July 13)
retrieved 6 May 2024 from
<https://medicalxpress.com/news/2020-07-people-sickle-cell-disease-covid-.html>

<p>This document is subject to copyright. Apart from any fair dealing for the purpose of private study or research, no part may be reproduced without the written permission. The content is provided for information purposes only.</p>
--