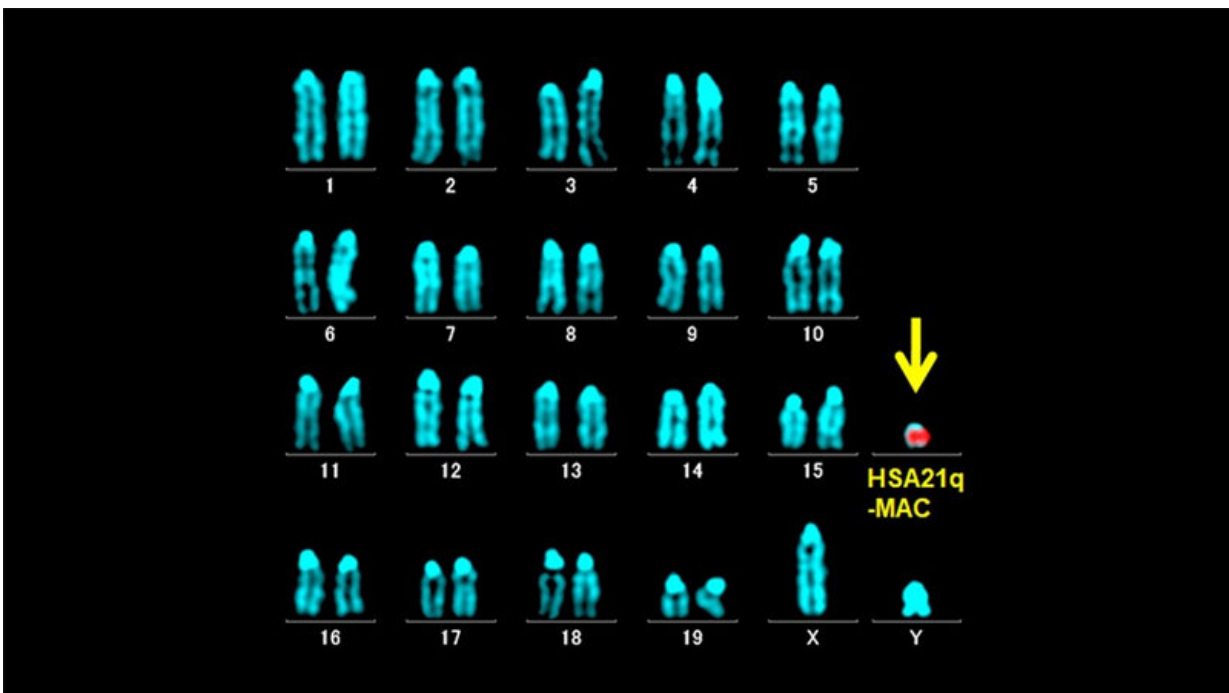


# Down syndrome mice open door to better understanding of the disorder

August 18 2020



Photograph of a karyotype—the collection of chromosomes within each cell of an organism—from a male mouse engineered by Johns Hopkins Medicine researchers to model Down syndrome in a human. The rodent possesses the 20 pairs of chromosomes (including the XY pair at the end that determines gender) normally seen in a mouse plus a piece of chromosome 21 from a human cell (indicated by the yellow arrow). Down syndrome occurs in humans when there is an extra partial or entire copy of the 21st chromosome. Credit: Johns Hopkins Medicine

Scientists across the globe often use mouse models in the study of human conditions to advance the pursuit of medicines and treatments. Now, Johns Hopkins Medicine researchers and their collaborators have created and characterized a new mouse replica of Down syndrome, long considered one of the most challenging disorders to simulate in laboratory animals.

A report of their research appeared June 29, 2020, in the journal *eLife*.

The new model may help researchers better understand how people with Down [syndrome](#) learn and develop, and eventually, lead to new therapies for potentially deadly complications of the condition, such as [heart disease](#) and thyroid problems.

Down syndrome, caused by trisomy 21, occurs when a person is born with an extra partial or entire copy of the 21st chromosome. Typically associated with distinct facial features and developmental delays, people with Down syndrome also experience difficulties with learning and memory, as well as higher rates of thyroid disease, blood and immune disorders and heart disease. Treating these conditions in people with Down syndrome is complicated by their genetics.

"There are more than 500 genes on chromosome 21 that can be overexpressed," says Roger Reeves, Ph.D., professor of physiology at the Johns Hopkins University School of Medicine. "So, in comparison to many other genetic conditions, Down syndrome is vastly more complex."

Further complicating the development of successful treatments is the lack of an accurate animal model to study the biology of Down syndrome and test potential therapies for conditions associated with it.

Reeves and his team endeavored to improve research efforts by creating a more precise replica of the condition in [mice](#). They did this by

inserting a human copy of chromosome 21 into mice using the rodent's own cellular structures that organize DNA. This enables the mouse cells to reliably copy and sort the extra human chromosome into new cells as they divide. It also lets the mice pass the additional genetic material on to their offspring.

This means that these mice, named TcMAC21 by the researchers, can be used relatively easily and at low cost in long-term experiments.

The resulting TcMAC21 mice have many characteristics indicative of Down syndrome in humans, including a distinct facial structure, a greater prevalence for congenital heart defects, a smaller-than-usual cerebellum and learning difficulties.

The researchers caution that no single animal [model](#) can perfectly replicate a human condition. However, they believe that the TcMAC21 [mouse model](#) developed in this study is a good starting point to create new and better strategies for helping people with Down syndrome.

"Our goal is to improve the health of people with Down syndrome to give them the best chance at achieving their full potential," says Reeves.

**More information:** Yasuhiro Kazuki et al. A non-mosaic transchromosomic mouse model of Down syndrome carrying the long arm of human chromosome 21, *eLife* (2020). [DOI: 10.7554/eLife.56223](https://doi.org/10.7554/eLife.56223)

Provided by Johns Hopkins University School of Medicine

Citation: Down syndrome mice open door to better understanding of the disorder (2020, August 18) retrieved 27 April 2024 from <https://medicalxpress.com/news/2020-08-syndrome-mice-door-disorder.html>

This document is subject to copyright. Apart from any fair dealing for the purpose of private study or research, no part may be reproduced without the written permission. The content is provided for information purposes only.