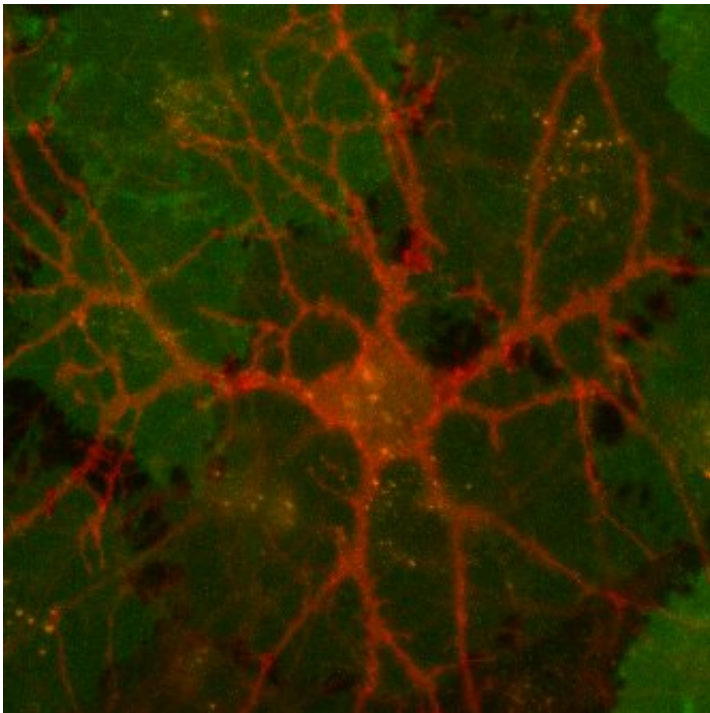


New dopamine sensors could help unlock the mysteries of brain chemistry

September 15 2020



RdLight1 sensors depicting dopamine in neurons. Credit: UC Regents

In 2018, Lin Tian and her team at UC Davis Health developed dLight1, a single fluorescent protein-based biosensor. This family of highly specific sensors detects dopamine, a hormone released by neurons to send signals to other nerve cells. When combined with advanced microscopy, dLight1 provides high resolution, real-time imaging of the spatial and temporal release of dopamine in live animals.

Recently, Tian and her team succeeded in expanding the color spectrum of the dLight1 sensor. In an article published Sept. 7 in *Nature Methods*, they introduced two new spectral variants of dLight1: the yellow YdLight1 and the red RdLight1.

"The new sensors will help researchers to detect and monitor different information processing activities in the brain," said Lin Tian, associate professor of biochemistry and molecular medicine and the lead author on the study. "With the different colors, we will be able to see multiple neurochemical release and neural activities at the same time."

The RdLight1 permits the simultaneous assessment of dopamine, pre- or post-synaptic neuronal activity and the glutamate release in specific types of cells and neuronal projections in animals. Its increased light penetration and imaging depth provide enhanced dopamine signal quality. This allows researchers to optically dissect dopamine's release and model its effects on neural circuits.

As a neurotransmitter, [dopamine](#) plays an important role in movement, attention, learning and the brain's pleasure and reward system.

"These exciting new tools opened a new door to developing color-shifted neurochemical indicators. Together with other tools, they have great potential to unlock the mysteries of brain chemistry in health and disease," Tian said. "The knowledge we gain from these [sensors](#) will facilitate the development of safer next-generation therapies to neuropsychiatric disorders such as depression, anxiety, schizophrenia and addiction."

More information: Tommaso Patriarchi et al, An expanded palette of dopamine sensors for multiplex imaging in vivo, *Nature Methods* (2020). [DOI: 10.1038/s41592-020-0936-3](https://doi.org/10.1038/s41592-020-0936-3)

Provided by UC Davis

Citation: New dopamine sensors could help unlock the mysteries of brain chemistry (2020, September 15) retrieved 24 April 2024 from <https://medicalxpress.com/news/2020-09-dopamine-sensors-mysteries-brain-chemistry.html>

This document is subject to copyright. Apart from any fair dealing for the purpose of private study or research, no part may be reproduced without the written permission. The content is provided for information purposes only.