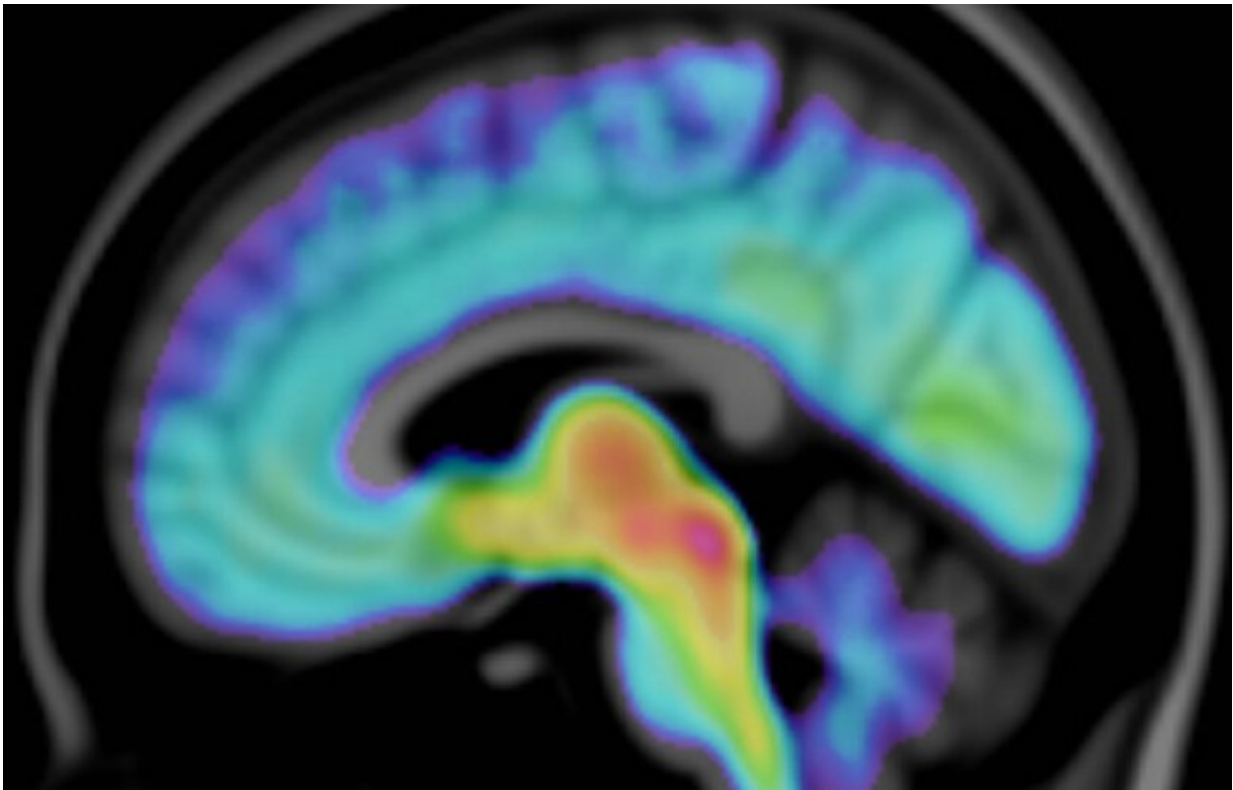


Imagery reveals autism-related brain differences

September 9 2020, by Anne Maria Hammarskjöld



A visualisation of the average serotonin transporter concentration in ASD, autism spectrum disorder. Credit: Max Andersson

People with autism spectrum disorder have lower levels of a protein that regulates the amount of serotonin in the brain, a paper from Karolinska Institutet in Sweden published in the journal *Molecular Psychiatry*

reports. For their study, the researchers used a molecular brain imaging technique to compare people with and without autism; their results offer hope of finding a drug that can alleviate the symptoms.

Autism spectrum disorder (ASD) debuts in childhood and is a neuropsychiatric condition characterized by limited communication and social skills and repetitive behavior.

"Unfortunately, knowledge of brain physiology in autism is scant and there are no drugs available able to affect the core symptoms in people with ASD who need such help," says the paper's first author Max Andersson, doctoral student at the Department of Clinical Neuroscience, Karolinska Institutet.

Brain function observed in ASD

The serotonin system has been considered a possible clue to the differences in [brain function](#) observed in ASD. Serotonin is an important neurotransmitter that regulates widely disparate physiological, emotional and cognitive processes. It also acts as a growth factor during brain development.

Previous studies have shown that many people with ASD have elevated levels of serotonin in the blood. Smaller-scale brain imaging studies have revealed lower levels of the serotonin transporter 5-HTT, a protein that regulates the amount of serotonin in the brain, but these results have remained unconfirmed.

The serotonin transporter

In this new study, the researchers used the PET ([positron emission tomography](#)) technique to study differences between 5-HTT levels in 15

individuals with ASD (11 men and four women) and 15 matched controls without ASD. The study shows that people with ASD have lower concentrations of the serotonin transporter in the cerebral cortex and several other areas of the brain, including the brain stem, which mediates signals between the cerebrum, the cerebellum, the spinal cord and the peripheral nervous system. They also found a correlation between the participants' scores in social cognitive tests of skills typically impaired in ASD, and levels of 5-HTT in certain areas of the brain.

"Our results show that there are significant differences and confirm that the brain's [serotonin](#) system plays an important part in ASD," says Andersson. "With a better understanding of the physiology of ASD, we will hopefully one day be able to alleviate the symptoms that cause suffering or functional impairment."

Before undergoing a PET scan, tiny amounts of a radioactive tracer are injected direct into the blood of study participants. The tracer then binds to the particular protein in the brain to be examined. Using the PET system, scientists can estimate the amount and distribution of the target binding site by measuring the radiation that the tracer emits in different parts of the [brain](#).

More information: Max Andersson et al. Serotonin transporter availability in adults with autism—a positron emission tomography study, *Molecular Psychiatry* (2020). [DOI: 10.1038/s41380-020-00868-3](https://doi.org/10.1038/s41380-020-00868-3)

Provided by Karolinska Institutet

Citation: Imagery reveals autism-related brain differences (2020, September 9) retrieved 10 April 2024 from <https://medicalxpress.com/news/2020-09-imagery-reveals-autism-related-brain-differences.html>

This document is subject to copyright. Apart from any fair dealing for the purpose of private study or research, no part may be reproduced without the written permission. The content is provided for information purposes only.