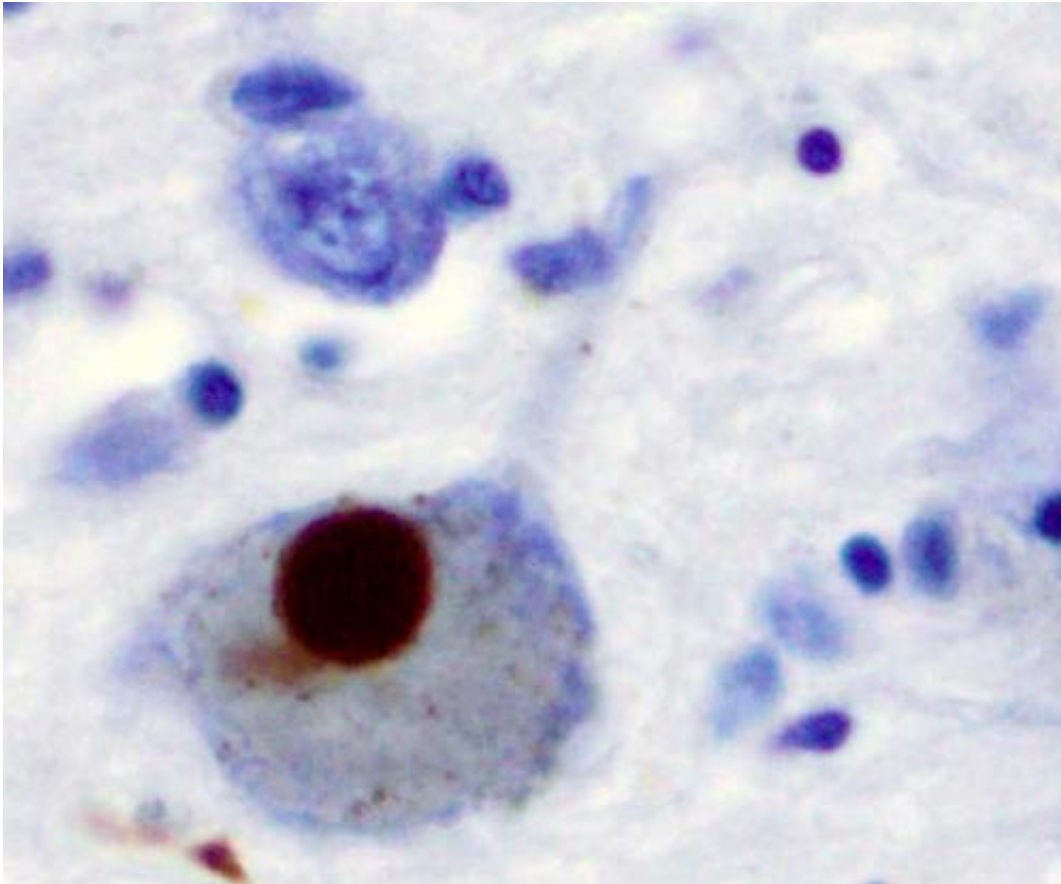


# Improving prediction of Parkinson's disease

September 16 2020

---



Immunohistochemistry for alpha-synuclein showing positive staining (brown) of an intraneural Lewy-body in the Substantia nigra in Parkinson's disease. Credit: Wikipedia

Including genetic markers in addition to well known risk factors improves tests to predict Parkinson's disease, according to a study led by Queen Mary University of London.

Parkinson's disease is the second most common neurodegenerative disorder worldwide. By the time it is diagnosed, the disease has caused permanent irreversible damage. Identifying individuals who are at risk, or detecting the disease earlier, is the best hope to prevent or develop effective treatments for Parkinson's.

Using data from over 2,000 patients diagnosed with Parkinson's and comparing with half a million controls in the UK Biobank, the researchers first investigated the association of certain risk factors with Parkinson's. Factors such as having a family history of the disease, not smoking, low alcohol consumption, depression, [excessive daytime sleepiness](#), epilepsy, earlier menarche, and a family history of dementia had small individual associations with Parkinson's.

Genetic risk factors also contributed to risk of Parkinson's and by combining [genetic factors](#) in a "Polygenic Risk Score" and the factors listed above, the ability to predict Parkinson's improved by a small amount. The researchers went on to show that interactions between environmental and genetic [risk factors](#) may explain some more of the missing risk.

Corresponding author Dr. Alastair Noyce of Queen Mary's Wolfson Institute of Preventive Medicine said: "These results provide further evidence that we can identify a group at higher risk of Parkinson's disease, who would be ideal candidates for neuroprotective drug trials or other prevention strategies. Our research takes a further step forward in thinking about the prevention of Parkinson's disease and who are the best groups to target for prevention."

**More information:** Benjamin Meir Jacobs et al. Parkinson's disease determinants, prediction and gene–environment interactions in the UK Biobank, *Journal of Neurology, Neurosurgery & Psychiatry* (2020). [DOI: 10.1136/jnnp-2020-323646](https://doi.org/10.1136/jnnp-2020-323646)

Provided by Queen Mary, University of London

Citation: Improving prediction of Parkinson's disease (2020, September 16) retrieved 9 May 2024 from <https://medicalxpress.com/news/2020-09-parkinson-disease.html>

This document is subject to copyright. Apart from any fair dealing for the purpose of private study or research, no part may be reproduced without the written permission. The content is provided for information purposes only.