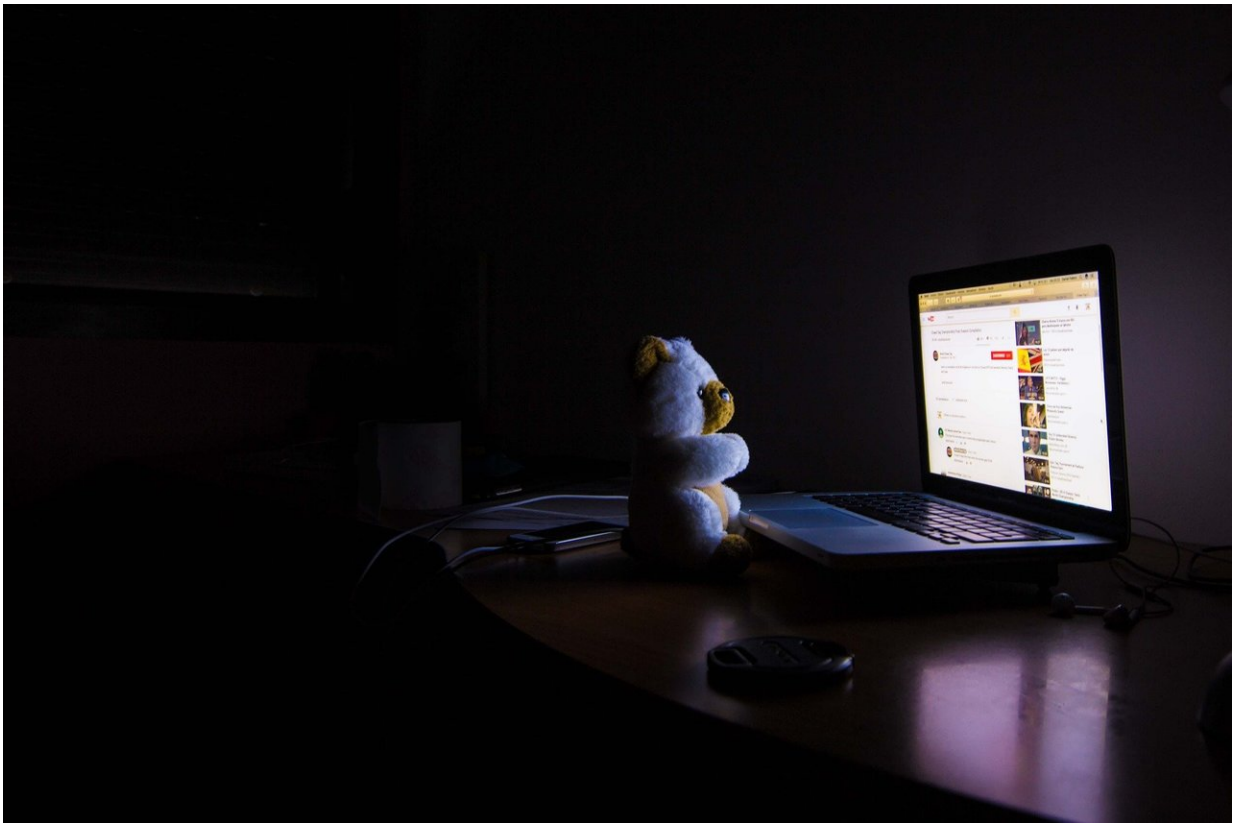


Study shows weighted blankets can decrease insomnia severity

September 23 2020



Credit: CC0 Public Domain

Weighted blankets are a safe and effective intervention in the treatment of insomnia, according to Swedish researchers who found that insomnia patients with psychiatric disorders experienced reduced insomnia

severity, improved sleep and less daytime sleepiness when sleeping with a weighted chain blanket.

Results of the randomized, controlled study show that participants using the weighted blanket for four weeks reported significantly reduced insomnia severity, better sleep maintenance, a higher daytime activity level, and reduced symptoms of fatigue, depression and anxiety.

Participants in the weighted blanket group were almost 26 times more likely to experience a decrease of 50% or more in their insomnia severity compared with the control group, and they were nearly 20 times more likely to achieve remission of their insomnia. Positive results were maintained during a 12-month, open follow-up phase of the study.

"A suggested explanation for the calming and sleep-promoting effect is the pressure that the chain blanket applies on different points on the body, stimulating the sensation of touch and the sense of muscles and joints, similar to acupuncture and massage," said principle investigator Dr. Mats Alder, consultant psychiatrist in the department of clinical neuroscience at the Karolinska Institutet in Stockholm, Sweden. "There is evidence suggesting that deep pressure stimulation increases parasympathetic arousal of the autonomic nervous system and at the same time reduces sympathetic arousal, which is considered to be the cause of the calming effect."

The study is published in the Sept. 15 issue of the *Journal of Clinical Sleep Medicine*.

The study involved 120 adults (68% women, 32% men) previously diagnosed with clinical insomnia and a co-occurring psychiatric disorder: major depressive disorder, bipolar disorder, attention deficit hyperactivity disorder, or generalized anxiety disorder. They had a mean age of about 40 years.

Participants were randomized to sleep for four weeks at home with either a chain-weighted blanket or a control blanket. Participants assigned to the weighted blanket group tried an 8-kilogram (about 17.6 pounds) chain blanket at the clinic. Ten participants found it to be too heavy and received a 6-kilogram (about 13.2 pounds) blanket instead. Participants in the control group slept with a light plastic chain blanket of 1.5 kilograms (about 3.3 pounds). Change in insomnia severity, the primary outcome, was evaluated using the Insomnia Severity Index. Wrist actigraphy was used to estimate sleep and daytime activity levels.

Nearly 60% of weighted blanket users had a positive response with a decrease of 50% or more in their ISI score from the baseline to the four-week endpoint, compared with 5.4% of the control group. Remission, a score of seven or less on the ISI scale, was 42.2% in the weighted blanket group, compared with 3.6% in the [control group](#).

After the initial four-week study, all participants had the option to use the weighted blanket for a 12-month follow-up phase. They tested four different weighted blankets: two chain blankets (6 kilograms and 8 kilograms) and two ball blankets (6.5 kilograms and 7 kilograms). After the test, and they were freely allowed to choose the blanket they preferred, with most selecting a heavier blanket. Only one participant discontinued the study due to feelings of anxiety when using the blanket. Participants who switched from the control blanket to a weighted blanket experienced a similar effect as patients who used the weighted blanket initially. After 12 months, 92% of weighted blanket users were responders, and 78% were in remission.

"I was surprised by the large effect size on [insomnia](#) by the weighted blanket and pleased by the reduction of levels of both anxiety and depression," said Adler.

In a related commentary, also published in the September issue of *JCSM*,

Dr. William McCall writes that the study results support the psychoanalytic "holding environment" theory, which states that touch is a basic need that provides calming and comfort. McCall urges providers to consider the impact of sleeping surfaces and bedding on sleep quality, while calling for additional research into the effect of weighted blankets.

More information: Bodil Ekholm et al, A randomized controlled study of weighted chain blankets for insomnia in psychiatric disorders, *Journal of Clinical Sleep Medicine* (2020). [DOI: 10.5664/jcsm.8636](https://doi.org/10.5664/jcsm.8636)

Provided by American Academy of Sleep Medicine

Citation: Study shows weighted blankets can decrease insomnia severity (2020, September 23) retrieved 2 May 2024 from <https://medicalxpress.com/news/2020-09-weighted-blankets-decrease-insomnia-severity.html>

<p>This document is subject to copyright. Apart from any fair dealing for the purpose of private study or research, no part may be reproduced without the written permission. The content is provided for information purposes only.</p>
--