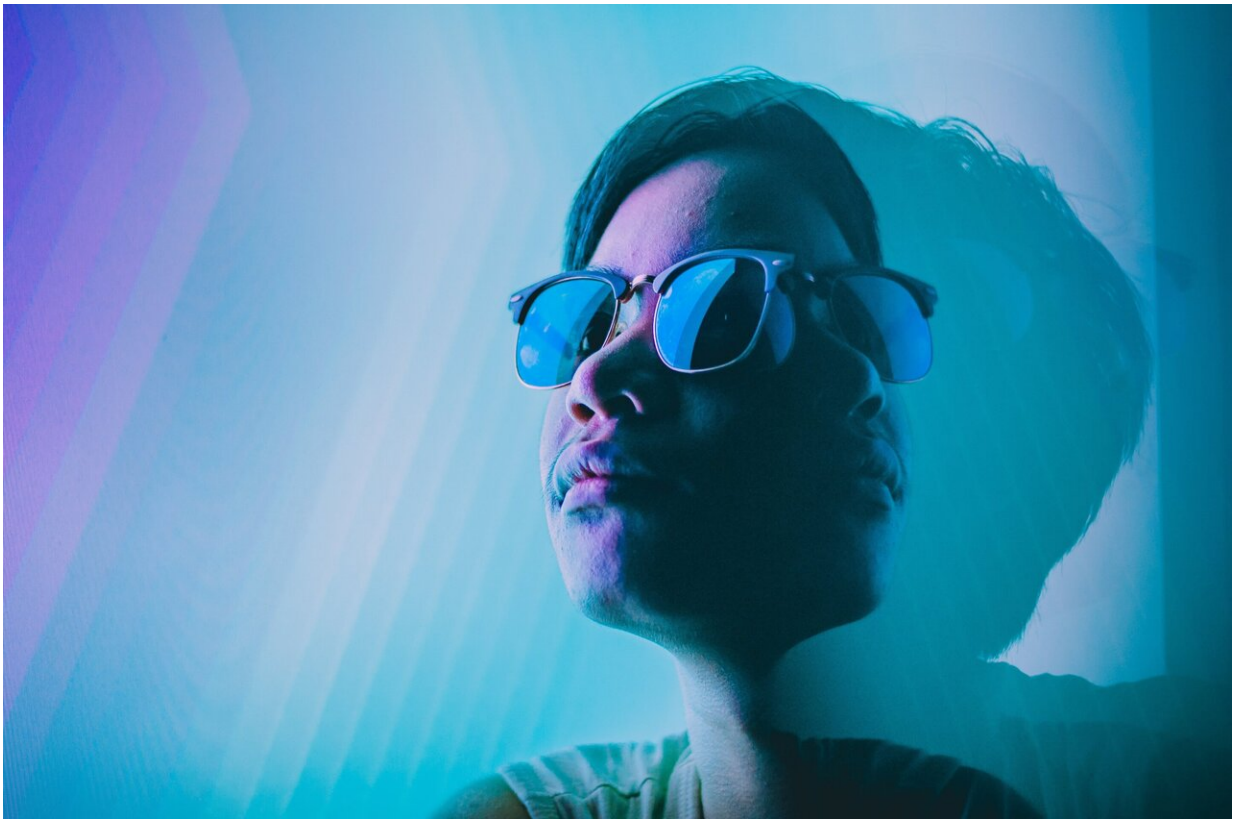


# Research finds that blue-light glasses improve sleep and workday productivity

October 15 2020

---



Credit: Unsplash/CC0 Public Domain

During the pandemic, the amount of screen time for many people working and learning from home as well as binge-watching TV has sharply increased. New research finds that wearing blue-light glasses just

before sleeping can lead to a better night's sleep and contribute to a better day's work to follow.

"We found that wearing [blue-light](#)-filtering glasses is an effective intervention to improve sleep, [work engagement](#), [task performance](#) and organizational citizenship behavior, and reduced counterproductive work behavior," said Cristiano L. Guarana, assistant professor of management and entrepreneurship at the Indiana University Kelley School of Business. "Wearing blue-light-filtering glasses creates a form of physiologic darkness, thus improving both sleep quantity and quality."

Most of the technology we commonly use—such as computer screens, smartphones and tablets—emits blue light, which past research has found can disrupt sleep. Workers have become more dependent on these devices, especially as we navigate remote work and school during the coronavirus pandemic.

The media have recently reported on the benefits of blue-light glasses for those spending a lot of time in front of a computer screen. This new research extends understanding of the circadian rhythm, a natural, internal process that regulates the sleep-wake cycle and repeats roughly every 24 hours.

"In general, the effects of wearing blue-light-filtering glasses were stronger for 'night owls' than for 'morning larks,' said Guarana, who previously has studied how lack of sleep affects business decisions, relationships and other behaviors in organizations. "Owls tend to have sleep periods later in the day, whereas larks tend to have sleep periods early in the day.

"Although most of us can benefit from reducing our exposure to blue light, owl employees seem to benefit more because they encounter greater misalignments between their internal clock and the externally

controlled work time. Our model highlights how and when wearing blue-light-filtering glasses can help employees to live and work better."

The findings appear in the paper, "The Effects of Blue-Light Filtration on Sleep and Work Outcomes," published online by the *Journal of Applied Psychology*. Guarana is the corresponding author; his co-authors are Christopher Barnes and Wei Jee Ong of the University of Washington.

The research found that daily engagement and performance of tasks may be related to more underlying [biological processes](#) such as the circadian process.

"Our research pushes the chronotype literature to consider the relationship between the timing of circadian processes and employees' performance," the researchers wrote.

A good night's sleep not only benefits workers; it also helps their employers' bottom lines.

"This study provides evidence of a very cost-effective means of improving employee [sleep](#) and work outcomes, and the implied return on investment is gigantic," said Barnes, professor of management and the Evert McCabe Endowed Fellow at the University of Washington's Foster School of Business. "I personally do not know of any other interventions that would be that powerful at that low of a cost."

Across two studies, researcher collected data from 63 company managers and 67 call center representatives at Brazil-based offices for a U.S. multinational financial firm and measured task performance from clients. Participants were randomly chosen to test glasses that filtered blue light or those that were placebo glasses.

"Employees are often required to work early mornings, which may lead to a misalignment between their internal clock and the externally controlled work time," the researchers said, adding that their analyses showed a general pattern that blue-light filtration can have a cumulative effect on key performance variables, at least in the short term.

"Blue-light exposure should also be of concern to organizations," Guarana said. "The ubiquity of the phenomenon suggests that control of [blue-light](#) exposure may be a viable first step for organizations to protect the circadian cycles of their employees from disruption."

**More information:** Cristiano L. Guarana et al, The effects of blue-light filtration on sleep and work outcomes., *Journal of Applied Psychology* (2020). [DOI: 10.1037/apl0000806](https://doi.org/10.1037/apl0000806)

Provided by Indiana University

Citation: Research finds that blue-light glasses improve sleep and workday productivity (2020, October 15) retrieved 20 March 2024 from <https://medicalxpress.com/news/2020-10-blue-light-glasses-workday-productivity.html>

<p>This document is subject to copyright. Apart from any fair dealing for the purpose of private study or research, no part may be reproduced without the written permission. The content is provided for information purposes only.</p>
--