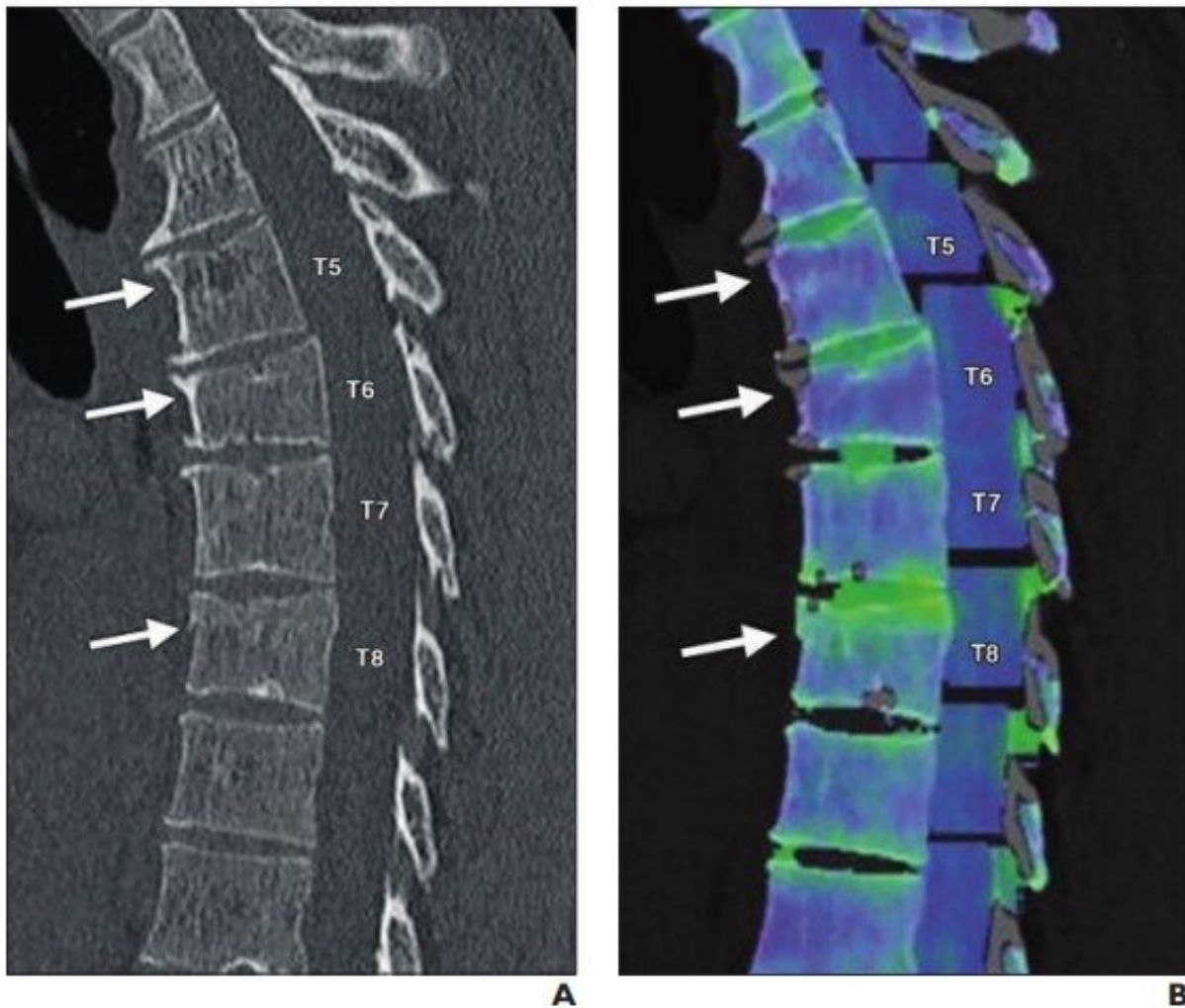


DECT in the ED: better diagnoses, less follow-up, more savings

October 3 2020



A, Sagittal reformatted bone window CT image of thoracic spine shows wedge-shaped deformity at T6 and subtle superior endplate deformities at T5 and T8. Arrows denote deformities. B, Color-coded dual-energy CT shows only T8 deformity is associated with bone marrow edema; T5 and T6 deformities likely

represent chronic fractures. Arrows denote deformities. Credit: American Roentgen Ray Society (ARRS), *American Journal of Roentgenology* (AJR)

According to an open-access article in ARRS' *American Journal of Roentgenology* (AJR), dual-energy CT (DECT) added value to routine interpretation of emergency department (ED) imaging studies by increasing radiologists' diagnostic confidence, leading to a reduction in downstream imaging and associated costs.

William D. Wong of Vancouver General Hospital and colleagues queried his institution's radiologic information system for all DECT studies performed in the ED between January 1, 2016, and December 31, 2016. The team then sorted CT examinations into five body systems—head and neck, chest, abdomen and pelvis, spine, and musculoskeletal—and a board-certified radiologist, not initially involved in reading these cases, reviewed the corresponding reports for mentions of dual-energy or spectral examination as part of the study interpretation.

To determine the impact of DECT on downstream imaging, studies in which DECT was mentioned in the report were read again in a randomized double-blind manner with the mixed image datasets only, which simulate conventional CT images.

The difference between the numbers of follow-up studies recommended after conventional CT and DECT was converted into U.S. dollars via the U.S. Centers for Medicare & Medicaid Services Physician Fee Schedule and 2019 Current Procedural Terminology codes to estimate a projected cost benefit due to any reduction in follow-up imaging.

"Among the 3,159 cases, use of dual energy or spectral analysis potentially altered management in 298 (9.4%) cases, resulted in

confirmation of suspected observations and increased diagnostic confidence in 455 (14.4%) cases, provided relevant additional information on an observation in 174 (5.5%) cases, resulted in characterization of an incidental finding in 44 (1.4%) cases, and was mentioned as being noncontributory in three (0.09%) cases." Wong et al. determined.

In terms of the five body systems they categorized, the musculoskeletal system accounted for the greatest number of studies wherein DECT potentially altered management (266/298 cases)—the most common use to confirm gout (185/266).

And although DECT was not noted in 2,272 reports (71.9%), compared with conventional CT alone, DECT findings avoided 162-191 recommended follow-up MRI examinations, 21-28 CT examinations, and 2-25 ultrasound examinations.

Meanwhile, DECT findings did prompt one additional recommended interventional angiography procedure, one ventilation-perfusion scan, and one imaging-guided biopsy.

Ultimately, for the Vancouver General ED in the year 2016, "DECT findings led to a decrease in recommended follow-up imaging examinations totaling an estimated \$52,991.53-61,598.44," Wong and colleagues concluded.

Acknowledging a future need to evaluate how referring clinicians adapt to DECT, as well as how much they trust any added value, the authors of this AJR article added that Vancouver General has since completed the implementation of DECT acquisition for all CT examinations performed in the ED.

More information: William D. Wong et al, Impact of Dual-Energy

CT in the Emergency Department: Increased Radiologist Confidence, Reduced Need for Follow-Up Imaging, and Projected Cost Benefit, *American Journal of Roentgenology* (2020). [DOI: 10.2214/AJR.19.22357](https://doi.org/10.2214/AJR.19.22357)

Provided by American Roentgen Ray Society

Citation: DECT in the ED: better diagnoses, less follow-up, more savings (2020, October 3) retrieved 6 May 2024 from <https://medicalxpress.com/news/2020-10-dect-ed-follow-up.html>

This document is subject to copyright. Apart from any fair dealing for the purpose of private study or research, no part may be reproduced without the written permission. The content is provided for information purposes only.