

# Lab-grown tumor models could lead to improved ovarian cancer treatments

October 2 2020

---



Ovarian cancer cells forming a cancer spheroid as they grow within the peptide-protein co-assembling material. Credit: Alvaro Mata

Scientists have created a three-dimensional (3-D) tumor model in the laboratory for ovarian cancer that could lead to improved understanding

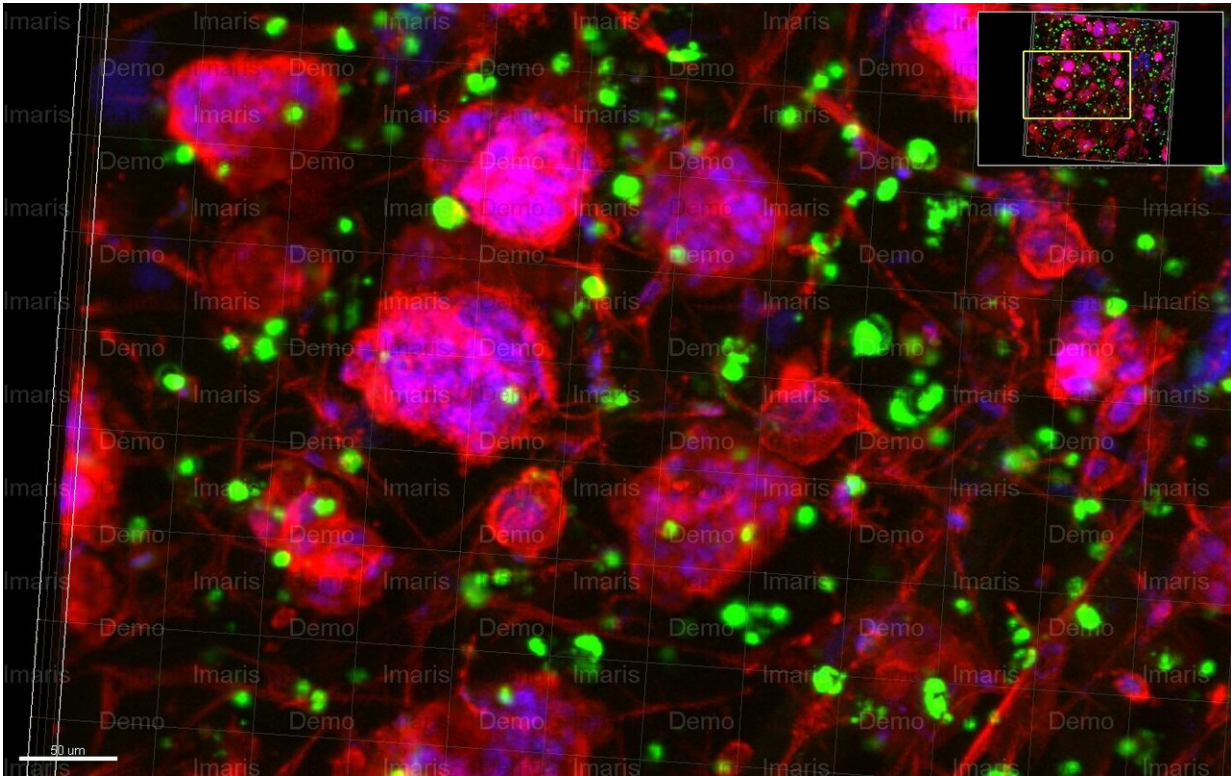
and treatment of the disease.

The international team, led by the University of Nottingham and Queen Mary University London have created a multicellular 3-D microenvironment that recreates the way [tumor](#) cells grow in ovarian cancer and respond to chemotherapy drugs. The research has been published today in *Science Advances*.

There is a need for improved 3-D cancer models to study tumor growth and progression in patients and test responses to new treatments. At present, 90% of successful cancer treatments tested pre-clinically fail in the early phases of clinical trials and less than 5% of oncology drugs are successful in clinical trials. Pre-clinical tests mostly rely on a combination of two-dimensional (2-D) lab grown [cell cultures](#) and animal models to predict responses to treatment.

However, conventional 2-D cell cultures fail to mimic key features of tumor tissues and interspecies differences can result in many successful treatments in animal hosts being ineffective in humans. Consequently, novel experimental 3-D cancer models are needed to better recreate the human tumor microenvironment and incorporate patient-specific differences.

The new hydrogel biomaterial is made by the co-assembly of peptides with proteins found in ovarian cancer. The mechanism of formation enables the peptides to assemble these proteins into molecular environments, emulating how they are presented in the patient tumor.



Cancer spheroids made from triple cultures including ovarian cancer cells, endothelial cells, and mesenchymal stem cells growing within the peptide-protein co-assembling material. Credit: Alvaro Mata

Professor Alvaro Mata, from the University of Nottingham's School of Pharmacy led the study, said: "Bioengineered self-assembling matrices expand our experimental repertoire to study [tumor growth](#) and progression in a biologically relevant, yet controlled, manner. In this study we used peptide amphiphiles to co-assemble with extracellular matrix proteins into tuneable 3-D models of the tumor microenvironment. The peptide/protein composite matrix was designed to attempt to resemble physical, biomolecular, and cellular features of tumors present in patients. We tested the response of the lab grown tumors using chemotherapeutics to validate the functionality of the

multicellular constructs and saw the tumor shrink. This suggests that the new peptide/protein/cellular biomaterial could lead to more effective testing of new drugs and treatments for [ovarian cancer](#)."

Self-assembly is the process by which multiple components can organize into larger well-defined structures. Biological systems rely on this process to controllably assemble molecules and cells into complex and functional tissues with the remarkable properties that we know of such as the capacity to grow, replicate, and perform robust functions.

Associate Professor Daniela Loessner, from Monash University in Australia and co-author of the study says: "Currently, the gold standard for 3-D cancer models is the commercially available Matrigel™, a solubilized basement membrane extracted from mouse sarcoma. A major reason for Matrigel's popularity is its capacity to enable cell-matrix interactions, which promote the growth of cancer and stromal cells into aggregates known as spheroids. However, it lacks control in mimicking the tumor microenvironment due to its batch variability, undefined composition, and animal origin. These features are important limitations to effectively screen and develop new treatments for [cancer](#). Our research has demonstrated the capacity to engineer a 3-D matrix that can serve as a complex, yet controllable, alternative to Matrigel."

**More information:** "Peptide-protein coassembling matrices as a biomimetic 3D model of ovarian cancer" *Science Advances* (2020). [advances.sciencemag.org/lookup ... .1126/sciadv.abb3298](https://advances.sciencemag.org/lookup...1126/sciadv.abb3298)

Provided by University of Nottingham

Citation: Lab-grown tumor models could lead to improved ovarian cancer treatments (2020, October 2) retrieved 26 April 2024 from <https://medicalxpress.com/news/2020-10-lab-grown->

[tumor-ovarian-cancer-treatments.html](http://tumor-ovarian-cancer-treatments.html)

This document is subject to copyright. Apart from any fair dealing for the purpose of private study or research, no part may be reproduced without the written permission. The content is provided for information purposes only.