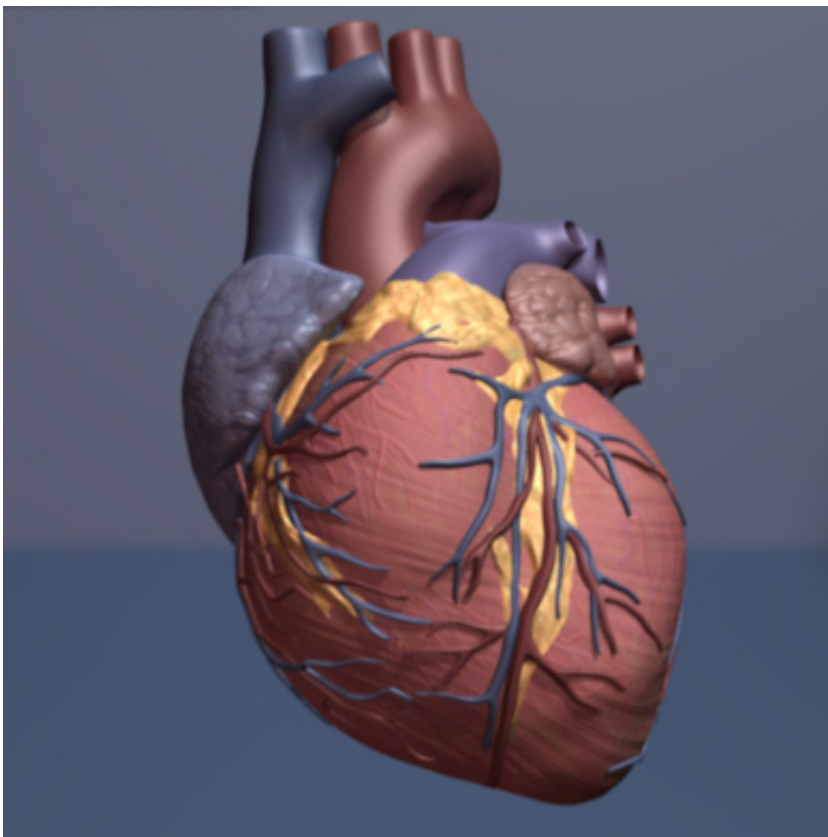


NIRS-IVUS imaging can help identify high-risk plaques that can lead to adverse outcomes

October 15 2020



Human heart. Credit: copyright American Heart Association

New data from the PROSPECT II study shows that NIRS-IVUS intracoronary imaging can help identify angiographically non-obstructive lesions with high-risk characteristics for future adverse cardiac

outcomes.

Findings were reported today at TCT Connect, the 32nd annual scientific symposium of the Cardiovascular Research Foundation (CRF). TCT is the world's premier educational meeting specializing in interventional cardiovascular medicine.

Acute coronary syndromes most often arise from rupture and thrombosis of lipid-rich atherosclerotic plaques that develop in the setting of systemic inflammation. In the PROSPECT study, a large plaque burden or small lumen area assessed by intravascular ultrasound (IVUS) identified angiographically mild lesions at increased risk to cause future coronary events. While lipid-rich fibroatheromas identified by IVUS can be predictive, plaque interpretation with this technique is not as precise.

Lipid content may be more accurately measured by near-infrared spectroscopy (NIRS). Recent studies have suggested that lipid-rich plaques detected by intracoronary NIRS imaging are associated with adverse outcomes. Identifying these "vulnerable" plaques before they progress may help to inform pharmacologic or other strategies to stabilize the plaque.

PROSPECT II was an investigator-sponsored multicenter, prospective, natural history study conducted at 16 centers in Sweden, Denmark and Norway to validate the use of NIRS and IVUS imaging in identifying non-obstructive lipid-rich plaques that are prone to cause future cardiac events.

After successful treatment of all flow-limiting lesions in patients with recent myocardial infarction, imaging of all three coronary arteries was performed with a combination NIRS-IVUS catheter. The lipid content of "non-culprit" lesions was assessed by NIRS, and IVUS assessment was also performed. The primary outcome was the covariate-adjusted rate of

major adverse cardiac events (the composite of cardiac death, myocardial infarction, unstable angina, or progressive angina) adjudicated to have arisen from non-culprit lesions. The relationship between plaques with high lipid content, large plaque burden, and small lumen areas and patient-level and lesion-level events were tested hierarchically.

A total of 3,629 untreated non-culprit lesions were prospectively characterized in 898 patients with myocardial infarction. Adverse events within four years occurred in 13.2% of patients, with a total of 8.0% of events arising from untreated non-culprit lesions with mean baseline diameter stenosis 46.9%. The presence of highly lipidic lesions was an independent predictor of patient-level non-culprit events (adjusted OR 2.27; 95% CI 1.25-4.13) and lesion-specific events (adjusted OR 7.83; 95% CI 4.12-14.89). Large plaque burden and small lumen areas were also independent predictors of adverse events.

"In PROSPECT II, lipid-rich plaques, as detected by NIRS, identified angiographically mild non-flow limiting [lesions](#) responsible for future coronary events," said David Erlinge, MD, Ph.D. Dr. Erlinge is Professor, Department of Cardiology, Clinical Sciences, Lund University at Skane University Hospital in Sweden.

"High lipid content, along with large [plaque](#) burden and small lumen area, may be added as prognostic indices of vulnerable plaques that put patients at risk for adverse outcomes. Further studies prospectively utilizing this information are warranted to improve outcomes for high-risk patients with coronary artery disease."

Provided by Cardiovascular Research Foundation

Citation: NIRS-IVUS imaging can help identify high-risk plaques that can lead to adverse

outcomes (2020, October 15) retrieved 28 April 2024 from
<https://medicalxpress.com/news/2020-10-nirs-ivus-imaging-high-risk-plaques-adverse.html>

This document is subject to copyright. Apart from any fair dealing for the purpose of private study or research, no part may be reproduced without the written permission. The content is provided for information purposes only.