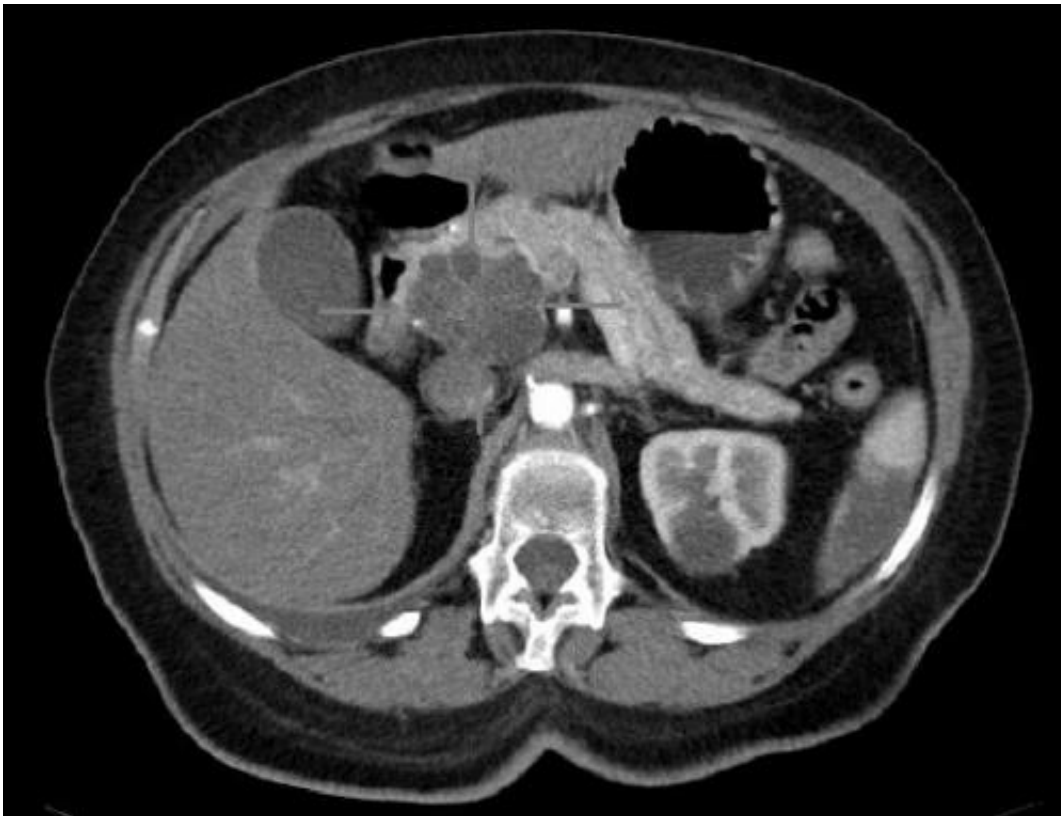


Pancreatic cancer: Subtypes with different aggressiveness discovered

October 15 2020



Axial CT image with i.v. contrast. Macrocystic adenocarcinoma of the pancreatic head. Credit: public domain

Tumors of the pancreas are particularly feared. They are usually discovered late and mortality is high. Until now, no targeted and personalized therapies exist. Scientists at the German Cancer Research

Center (DKFZ) and the Heidelberg Institute for Stem Cell Technology and Experimental Medicine (HI-STEM) have now succeeded for the first time in defining two differently aggressive molecular subtypes of pancreatic carcinoma. This provides new insights into the origin of the tumors. In the more aggressive group of tumors, a phenomenon known as 'viral mimicry' leads to a cancer-promoting inflammatory reaction. This could possibly be the starting point for the development of a targeted, subtype-oriented therapy. The results have now been published in the journal *Cancer Discovery*.

Pancreatic carcinoma is particularly insidious. The disease usually progresses without symptoms over a long period of time and is only diagnosed in advanced stages—when it is difficult to treat. The mortality rate for this tumor disease is therefore particularly high. In contrast to many other cancers, scientists have not yet succeeded in identifying efficient targets for a targeted personalized therapy. Most patients with an advanced tumor disease receive a similar treatment—usually consisting of a combination chemotherapy.

About 95 percent of all cases of pancreatic cancer are so-called adenocarcinomas. "In the past, there have been attempts to work out genetic differences, but it turned out that all adenocarcinomas of the pancreas carry a similar collection of mutations," explains Andreas Trumpp, stem cell researcher at DKFZ and HI-STEM. Trumpp's team has now chosen a different approach in collaboration with the Department of Surgery at Heidelberg University Hospital. From [tissue samples](#) from patients, they first isolated pure cancer cells from the tumors' complex cell mixture, which contains large amounts of connective tissue, vessels and immune cells. The researchers then searched the genome of the purified tumor cells for differences in the [methylation pattern](#). These are chemical labels attached to the DNA molecule that determine whether a gene segment is active or not.

"Based on the methylation patterns of the tumor genomes, we were able to define two completely different subtypes of adenocarcinomas, which differ in the course of carcinogenesis and in their aggressiveness," says Elisa Espinet, first author of the current publication. One of the two subtypes is much more aggressive and actually develops directly from the ductal cells lining the ductal system of the pancreas, while the less aggressive tumors develop from glandular cells. "We have thus discovered a molecular signature that allows us to distinguish between two subtypes of pancreatic carcinoma that are also clinically different," explains Espinet.

What's more, upon closer analysis of the methylation patterns, the Heidelberg researchers discovered that very specific regions in the genome carry fewer methyl groups in the more aggressive subtype. These genome regions contained sequences of so-called endogenous retroviruses, remnants of viruses that have remained in the human genome during evolution. Due to the methylation of their DNA, they are normally silenced and do not play a significant role in healthy individuals. In this subtype, however, they become active again when the methyl groups are removed and form double-stranded RNA strands.

This type of RNA molecule does not normally occur in the body and is therefore a warning signal for the immune system that viruses have entered the cell. As a result, the interferon system is activated and tries to fight the invading viruses. As a result, inflammatory messengers are also released in the vicinity of the tumor. "Feigning a viral infection in genetically modified tumor cells is called "viral mimicry", says Espinet. In the tumor, the viral mimicry promotes certain inflammatory reactions that further drive cancer growth and, in addition, probably stimulates metastasis, i.e. the formation of the dreaded daughter tumors.

The DKFZ researchers found viral mimicry only in the ductal subtype and in traces also in healthy ductal cells, but not in the healthy glandular

cells of the pancreas or the pancreatic cancer cells of the less aggressive subtype. This explained why pancreatic tumors that develop directly from the cells of the pancreatic ducts, which accounted for about one third of the tumors studied, are particularly aggressive.

At the same time, the result opens up new perspectives for a more targeted and personalized therapy of pancreatic cancer. "By blocking the interferon signaling pathways at various sites, we were able to significantly slow down cancer growth in mice to which human [pancreatic cancer](#) cells had been transferred. However, the regulation of these signals is highly complex. We are now looking for ways to not only slow down the [tumor cells](#), but actually eliminate them," says Trumpp, explaining the further progress of preclinical research.

More information: Elisa Espinet et al. Aggressive PDACs show hypomethylation of repetitive elements and the execution of an intrinsic IFN program linked to a ductal cell-of-origin. *Cancer Discov* October 15 2020. [DOI: 10.1158/2159-8290.CD-20-1202](https://doi.org/10.1158/2159-8290.CD-20-1202)

Provided by German Cancer Research Center

Citation: Pancreatic cancer: Subtypes with different aggressiveness discovered (2020, October 15) retrieved 20 April 2024 from <https://medicalxpress.com/news/2020-10-pancreatic-cancer-subtypes-aggressiveness.html>

<p>This document is subject to copyright. Apart from any fair dealing for the purpose of private study or research, no part may be reproduced without the written permission. The content is provided for information purposes only.</p>
--