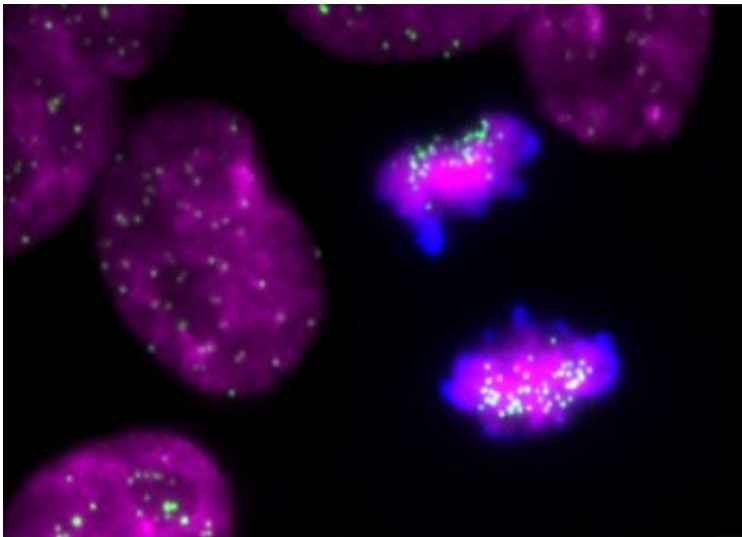


Stem cells: New insights for future regenerative medicine approaches

October 28 2020



Chromosome segregation in a human induced pluripotent stem cell. Centromeres in green and DNA in magenta. Credit: © Carolina Pereira & Inês Milagre

Stem cells are considered one of the most promising tools in the field of regenerative medicine because they are a cell type that can give rise to all the cells in our bodies and that has the potential to be used to treat tissue loss due to damage or disease. Stem cells that are similar to the ones of embryonic origin can be generated in the laboratory and they are known as induced stem cells (which can be obtained from skin cells, for example). Their induction relies on the reprogramming of their gene expression and originates a stem cell from a differentiated one, a finding that earned the Nobel Prize in Physiology or Medicine in 2012.

Despite their potential, little is known about the mechanisms that govern the division of [stem cells](#), which have propensity to accumulate chromosome segregation errors during this process. Stem cells can duplicate almost indefinitely and one of the elements necessary for a successful [cell division](#) (or mitosis) is the centromere. This is the binding place of the protein complexes that ensure that the [genetic material](#), when duplicated and condensed in [chromosomes](#), is distributed equally between the two daughter-cells.

Driven by the curiosity to understand the mechanisms that govern chromosome segregation in stem cells, the team of researchers from the IGC, led by Raquel Oliveira and Lars Jansen, designed a fundamental biology project with eyes set on centromeres and the protein complexes associated to them.

The study allowed "a precise definition of the composition and size of the centromeres of stem cells and revealed that their chromosomes have weaker centromeres when compared to the ones of differentiated cells. Moreover, these structures become weaker as a consequence of acquiring the identity of stem cell itself," explains Inês Milagre, main author of the study.

"This 'weakness' in a [structure](#) of such importance for the correct distribution of chromosomes between daughter-cells might explain why these cells make more mistakes when they divide," adds Lars Jansen, principal investigator at the IGC and the University of Oxford.

The high tendency for errors during cell division, which originates chromosomal anomalies, is currently one of the biggest limitations to the usage of these cells. "To overcome this limitation we must understand why such mistakes occur. Beyond the important discovery of this study, we are now looking at other structures that are important for cell division in order to have a more holistic vision of all the mitotic machinery of

stem [cells](#), so that we can revert their tendency for erroneous divisions," reveals Raquel Oliveira, principal investigator at IGC.

This study brings new perspectives to the understanding of cell division fidelity and points out possible causes for the presence of anomalies, which can greatly impact the therapies developed in the field of regenerative medicine.

More information: Inês Milagre et al, Reprogramming of human cells to pluripotency induces CENP-A chromatin depletion, *Open Biology* (2020). [DOI: 10.1098/rsob.200227](https://doi.org/10.1098/rsob.200227)

Provided by Instituto Gulbenkian de Ciencia

Citation: Stem cells: New insights for future regenerative medicine approaches (2020, October 28) retrieved 13 March 2024 from <https://medicalxpress.com/news/2020-10-stem-cells-insights-future-regenerative.html>

This document is subject to copyright. Apart from any fair dealing for the purpose of private study or research, no part may be reproduced without the written permission. The content is provided for information purposes only.
