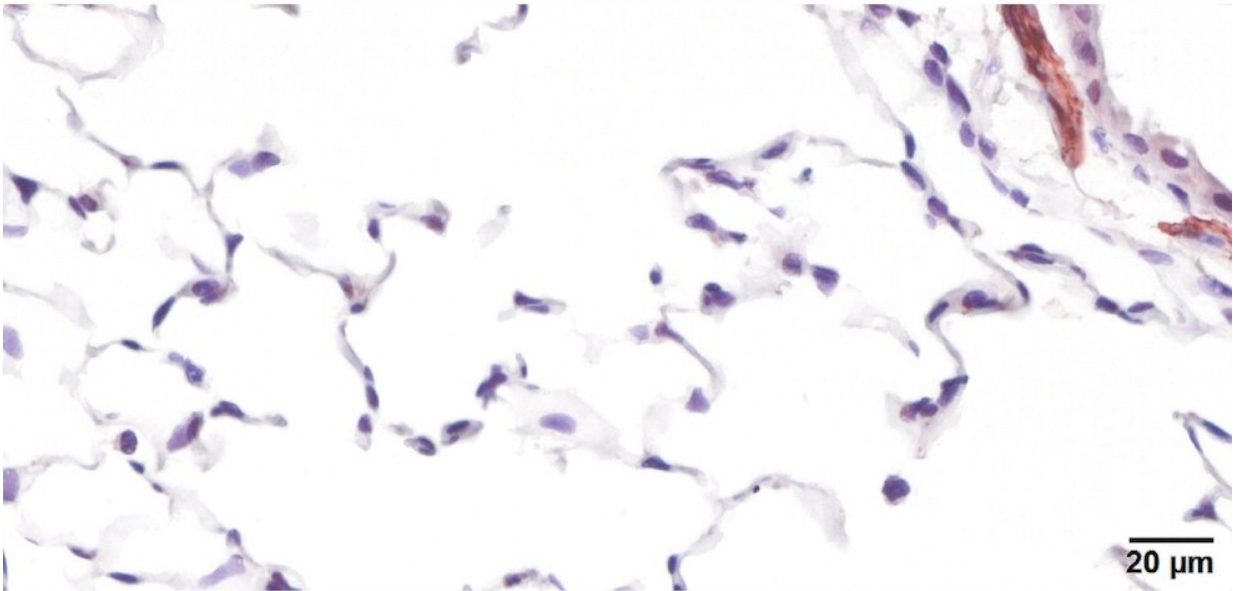


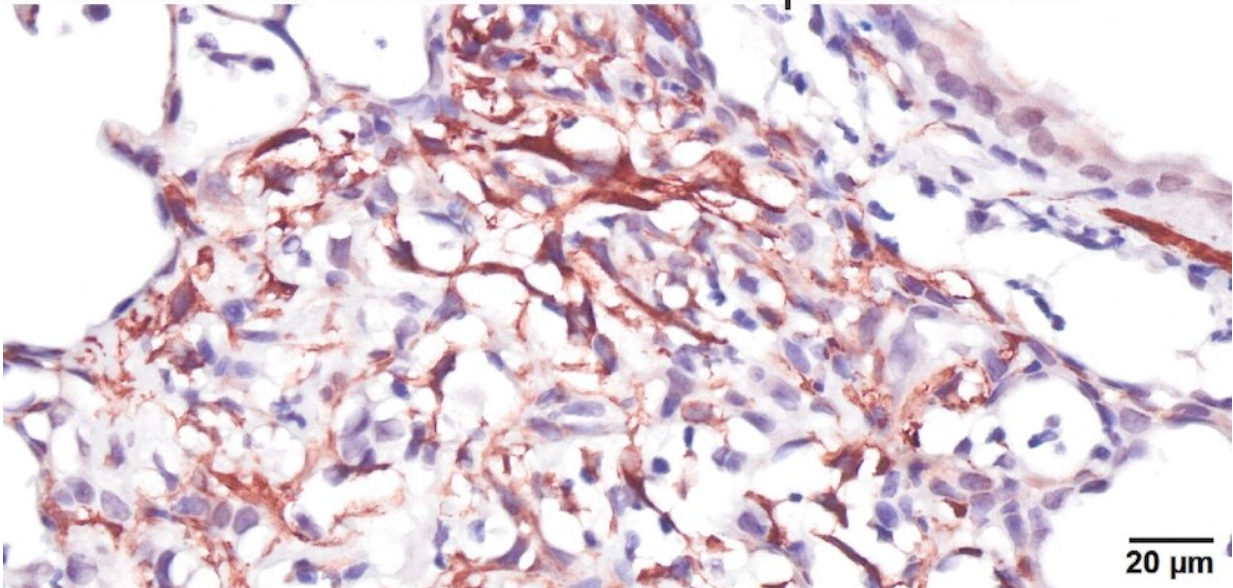
Study connects diabetes, air pollution to interstitial lung disease

December 9 2020, by Emily Lenhard

Microscopy of normal lung tissue from diabetic mouse that breathed clean air



Scarred lung tissue (fibrosis) from diabetic mouse that breathed ozone-polluted air



Credit: Michigan State University

People with pre-diabetes or diabetes who live in ozone-polluted areas may have an increased risk for an irreversible disease with a high mortality rate. A new study published in the *Environmental Health Perspectives* connects insulin resistance and repetitive ozone exposure to the development of interstitial lung disease.

"Our findings are especially important today as we're in the midst of the COVID-19 pandemic, where we have great concern regarding the convergence of health effects from air pollution and SARS-CoV-2 in susceptible populations like people with diabetes," said James Wagner, lead author and associate professor for the MSU College of Veterinary Medicine's Department of Pathobiology and Diagnostic Investigation.

Ozone—a gas often referred to as "smog"—is known to exacerbate certain [lung](#) diseases, such as asthma and rhinitis, which are primarily upper airway diseases. But recent epidemiology (Johansson et al. and Sesé et al.) suggests an association between high [ozone](#) concentrations and adverse health effects in the deep lung, which cause difficulty breathing due to lung restriction and stiffness.

"More than 170,000 people in the U.S. suffer from interstitial lung disease. Furthermore, type 2 diabetes and insulin resistance are recently suggested [risk factors](#) for developing [pulmonary fibrosis](#)," said Jack Harkema, University Distinguished Professor, Albert C. and Lois E. Dehn Endowed Chair in Veterinary Medicine, and director of the Laboratory for Environmental and Toxicologic Pathology and the Mobile Air Research Laboratories at MSU.

In the study, Wagner, Harkema and their collaborators, Robert Tighe and Christina Barkauskas from Duke University's Department of Medicine, studied healthy mice, mice with mild insulin resistance and mice with marked insulin resistance. The study found a direct relationship between [insulin resistance](#) levels and the severity of lung

inflammation and scarring (fibrosis); diabetes-prone mice were particularly susceptible to inflammation and tissue remodeling caused by repeated ozone exposure.

"Evidence suggests that ozone exposure could exacerbate pulmonary fibrosis, particularly in individuals that are diabetic," said Tighe, a pulmonologist who specializes in interstitial disease at Duke. "Poorly controlled diabetes, in particular, may be an important co-morbidity for worsened lung damage."

According to Wagner, these findings are of critical importance for public health.

"Our results propose a causal link for ozone exposure to preferentially promote early pulmonary fibrosis and interstitial lung disease in pre-diabetic mice. We only exposed these mice for three weeks, but there are millions of people living in cities like Los Angeles and New York who are exposed to high levels of ozone day after day," he said. "Then, you must consider the prevalence of pre-diabetes people—approximately 33% in this country. Our study results suggest that people who are borderline insulin resistant—or diabetic—and living in areas with high levels of ozone pollution might be at an [increased risk](#) for developing interstitial lung [disease](#)."

This study is just the latest in Wagner and Harkema's research efforts, which describe pre-diabetes as a risk factor for multiple possible adverse responses to air pollution. Wagner has previously shown deleterious effects on heart rate, blood pressure, and adipose tissue inflammation in pre-diabetic rodents that were exposed to ozone (Wagner et al. and Zhong et al.).

The authors believe this study is the first of its kind, as it describes exacerbated pulmonary inflammation and remodeling due to repetitive,

short-term ozone exposures in insulin-resistant rodents that also exhibit other manifestations of type 2 diabetes. The work was supported in large part by the researchers' grant from the Environmental Protection Agency's Great Lakes Air Center for Integrative Environmental Research (GLACIER) at MSU. For more information about this research, contact Dr. James Wagner.

More information: James G. Wagner et al. Repetitive Ozone Exposures and Evaluation of Pulmonary Inflammation and Remodeling in Diabetic Mouse Strains, *Environmental Health Perspectives* (2020).
[DOI: 10.1289/EHP7255](https://doi.org/10.1289/EHP7255)

Provided by Michigan State University

Citation: Study connects diabetes, air pollution to interstitial lung disease (2020, December 9) retrieved 5 May 2024 from
<https://medicalxpress.com/news/2020-12-diabetes-air-pollution-interstitial-lung.html>

<p>This document is subject to copyright. Apart from any fair dealing for the purpose of private study or research, no part may be reproduced without the written permission. The content is provided for information purposes only.</p>
--