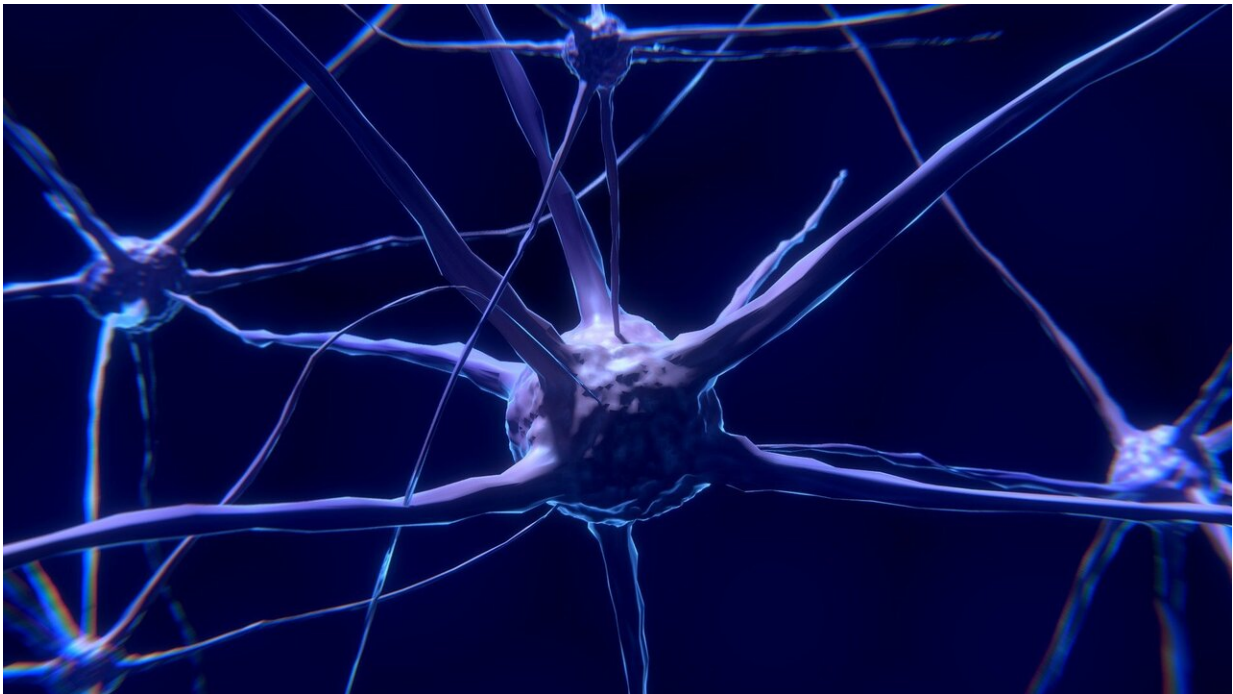


Bedside EEG test can aid prognosis in unresponsive brain injury patients

January 5 2021, by Beck Lockwood



Credit: Pixabay/CC0 Public Domain

Assessing the ability of unresponsive patients with severe brain injury to understand what is being said to them could yield important insights into how they might recover, according to new research.

A team at the University of Birmingham has shown that responses to speech can be measured using electroencephalography, a non-invasive

technique used to record electrical signals in the [brain](#). The strength of these responses can be used to provide an accurate prognosis that can help clinicians make the most effective treatment decisions.

Significantly the assessments can be made while the patient is still in [intensive care](#) and does not require any conscious response from the patient—they do not have to 'do' anything.

In the study, published in *Annals of Neurology*, the team assessed 28 patients with acute traumatic brain injury (TBI) who were not under sedation, and who failed to obey commands. The patients were assessed within just a few days of their injury. They were played streams of sentences and phrases made up of monosyllabic words while their [brain activity](#) was monitored using EEG.

In healthy individuals, EEG activity only synchronizes with the rhythm of phrases and sentence when listeners consciously comprehend the speech. The researchers assessed the level of the unresponsive patients' comprehension by measuring the strength of this synchronicity.

The researchers were able to follow up 17 of the patients three months following their injury, and 16 of the patients after six months. They found the outcomes significantly correlated with the strength of the patients' response to speech measured by the EEG.

Patients with [traumatic brain injury](#) are commonly assessed by their behavior or by a CT scan, but some patients who remain unresponsive pose a significant challenge. Recent studies have shown that TBI patients can be shown to 'imagine' themselves following commands. This activity can also be tracked using EEG. However, this approach requires a fairly sophisticated response from the patient, so patients with lower brain capabilities may be overlooked.

Lead author Dr. Damian Cruse is based at the University of Birmingham's School of Psychology and Centre for Human Brain Health. He explains: "The strength of our approach is that we can measure a scale of comprehension without needing any other sort of response from the patient. This insight could significantly reduce prognostic uncertainty at a critical point. It could help clinicians make more appropriate decisions about whether or not to continue life-sustaining therapy—and also ensure rehabilitation resources are allocated to patients who are most likely to benefit."

More information: Rodika Sokoliuk et al. Covert speech comprehension predicts recovery from acute unresponsive states, *Annals of Neurology* (2020). DOI: [10.1002/ana.25995](https://doi.org/10.1002/ana.25995)

Provided by University of Birmingham

Citation: Bedside EEG test can aid prognosis in unresponsive brain injury patients (2021, January 5) retrieved 23 May 2024 from <https://medicalxpress.com/news/2021-01-bedside-eeg-aid-prognosis-unresponsive.html>

This document is subject to copyright. Apart from any fair dealing for the purpose of private study or research, no part may be reproduced without the written permission. The content is provided for information purposes only.
