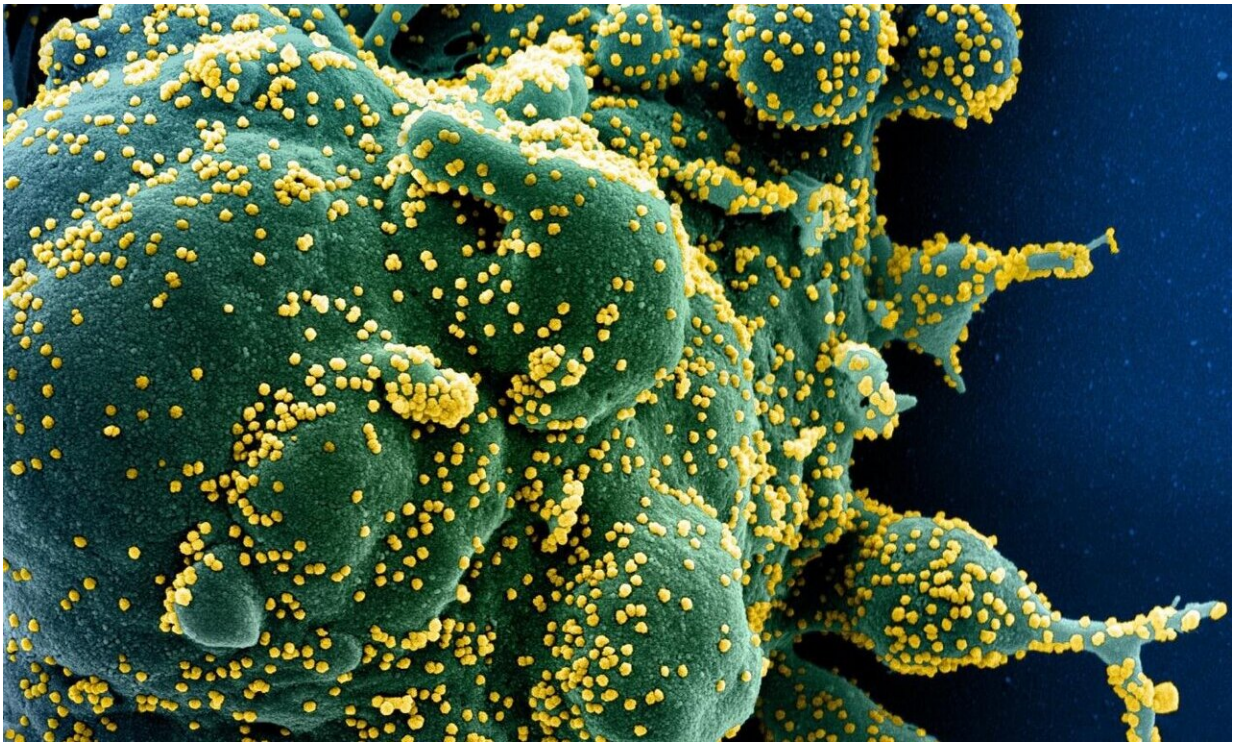


Another common cold virus? Modeling SARS-CoV-2's progress through the ages

January 12 2021



Colorized scanning electron micrograph of an apoptotic cell (green) heavily infected with SARS-CoV-2 virus particles (yellow), isolated from a patient sample. Image captured at the NIAID Integrated Research Facility (IRF) in Fort Detrick, Maryland. Credit: NIH/NIAID

What is the endgame for SARS-CoV-2, the virus that is causing worldwide devastation? If it becomes endemic—circulating in the

general population—and most people are exposed in childhood, SARS-CoV-2 may join the ranks of mild cold-causing coronaviruses that currently circulate in humans, according to a model developed by Emory and Penn State scientists.

The model, published January 12 in *Science*, draws upon studies of the four common cold coronaviruses and SARS-CoV-1. For those viruses, the term 'herd immunity' is incomplete and possibly misleading, says postdoctoral fellow Jennie Lavine, Ph.D., first author of the *Science* paper.

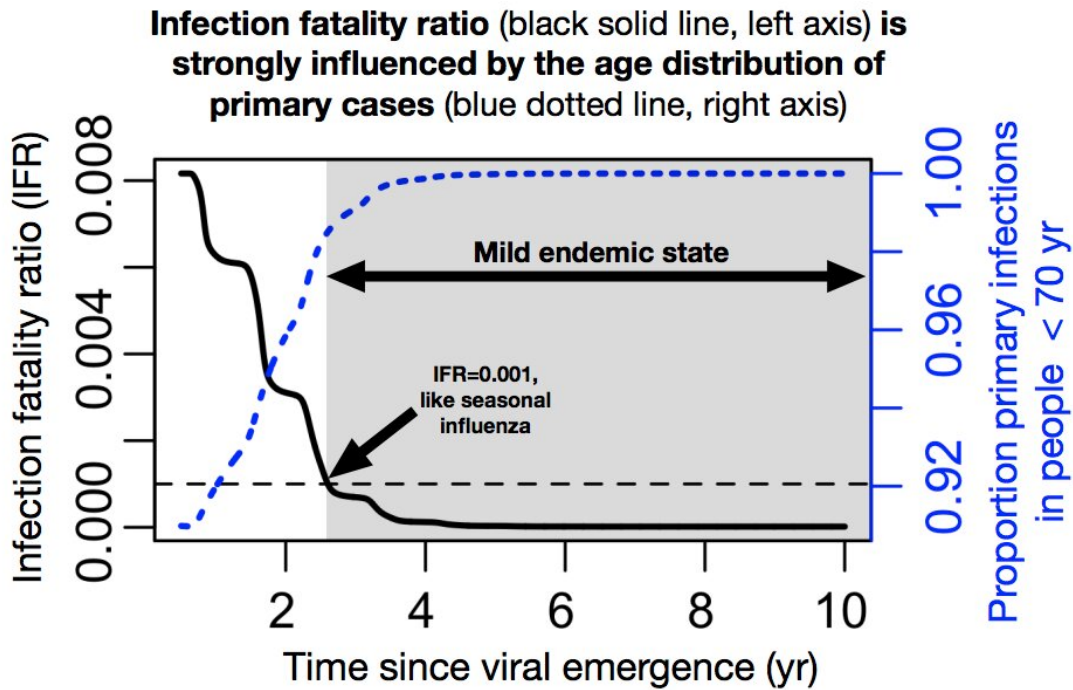
The four common cold-causing coronaviruses have been circulating in humans for a long time and almost everyone is infected at a young age—younger than measles before a vaccine was available. Natural [infection](#) in childhood provides immunity that protects people later in life against severe disease, but it doesn't prevent periodic reinfection, says Lavine.

"Reinfection is possible within one year, but even if it occurs, symptoms are mild and the virus is cleared from the body more quickly," she says. "It highlights the need to tease apart the components of immunity to SARS-CoV-2. How long does immunity that prevents pathology last, and how long does immunity that prevents transmission last? Those durations may be very different."

Studies are now emerging that provide concrete data on how long antibodies and immune cells against SARS-CoV-2 last after infection, Lavine says. However, researchers are still figuring out how those components translate to protection against disease or transmission.

"Overall, we're asking: how does SARS-CoV-2 compare to other viruses such as seasonal influenza or respiratory syncytial virus," she says. "This model assumes immunity to SARS-CoV-2 works similar to other human

coronaviruses. We don't really know what it would be like if someone got one of the other coronaviruses for the first time as an adult, rather than as a child."



Simulation shown with $R_0=4$. Faster transmission results in a quicker transition to the endemic state but more total deaths. Social distancing saves lives, delays endemicity and allows crucial time for vaccine roll-out. Vaccination speeds up the transition to the endemic state and reduces the death toll. Credit: Jennie Lavine

The model predicts that the infection fatality ratio for SARS-CoV-2 may fall below that of seasonal influenza (0.1 percent), once an endemic steady-state is reached.

"We are in uncharted territory, but a key take-home message from the

study is that immunological indicators suggest that fatality rates and the critical need for broad-scale vaccination may wane in the near term, so maximum effort should be on weathering this virgin pandemic enroute to endemicity," said Ottar Bjornstad, Distinguished Professor of Entomology and Biology and J. Lloyd & Dorothy Foehr Huck Chair of Epidemiology, Penn State.

Lavine developed the model, together with Bjornstad and Rustom Antia, Ph.D., Samuel C. Dobbs professor of biology at Emory University and Emory Vaccine Center.

A safe and effective vaccine against COVID-19 could save hundreds of thousands of lives in the first year or two of vaccine roll-out, but continued mass vaccination may be less critical once SARS-CoV-2 becomes endemic, the authors say. Targeted vaccination in vulnerable subpopulations may still save lives, they say.

Another implication is: during the transition to endemicity, that using symptoms only as a surveillance tool to look for infections and curb the virus' spread will become more difficult. Thus, widely available testing may become particularly important during vaccine roll-out to protect vulnerable populations, the authors point out.

So far, the available data on SARS-CoV-2 infection in infants and young children suggest that severity is generally mild and mortality is low. There are exceptions on the individual level, with some experiencing rare complications such as MIS-C (multisystem inflammatory syndrome in children). In contrast, if SARS-CoV-2 infection in childhood were to become more severe—like MERS-CoV (Middle East respiratory syndrome-related [coronavirus](#)) - routine vaccination programs will be still necessary, the authors say.

More information: *Science* (2021). [science.sciencemag.org/cgi/doi ...](https://science.sciencemag.org/cgi/doi/10.1126/science.abc)

[1126/science.abe6522](https://doi.org/10.1126/science.abe6522)

Provided by Emory University

Citation: Another common cold virus? Modeling SARS-CoV-2's progress through the ages (2021, January 12) retrieved 20 April 2024 from

<https://medicalxpress.com/news/2021-01-common-cold-virus-sars-cov-ages.html>

This document is subject to copyright. Apart from any fair dealing for the purpose of private study or research, no part may be reproduced without the written permission. The content is provided for information purposes only.