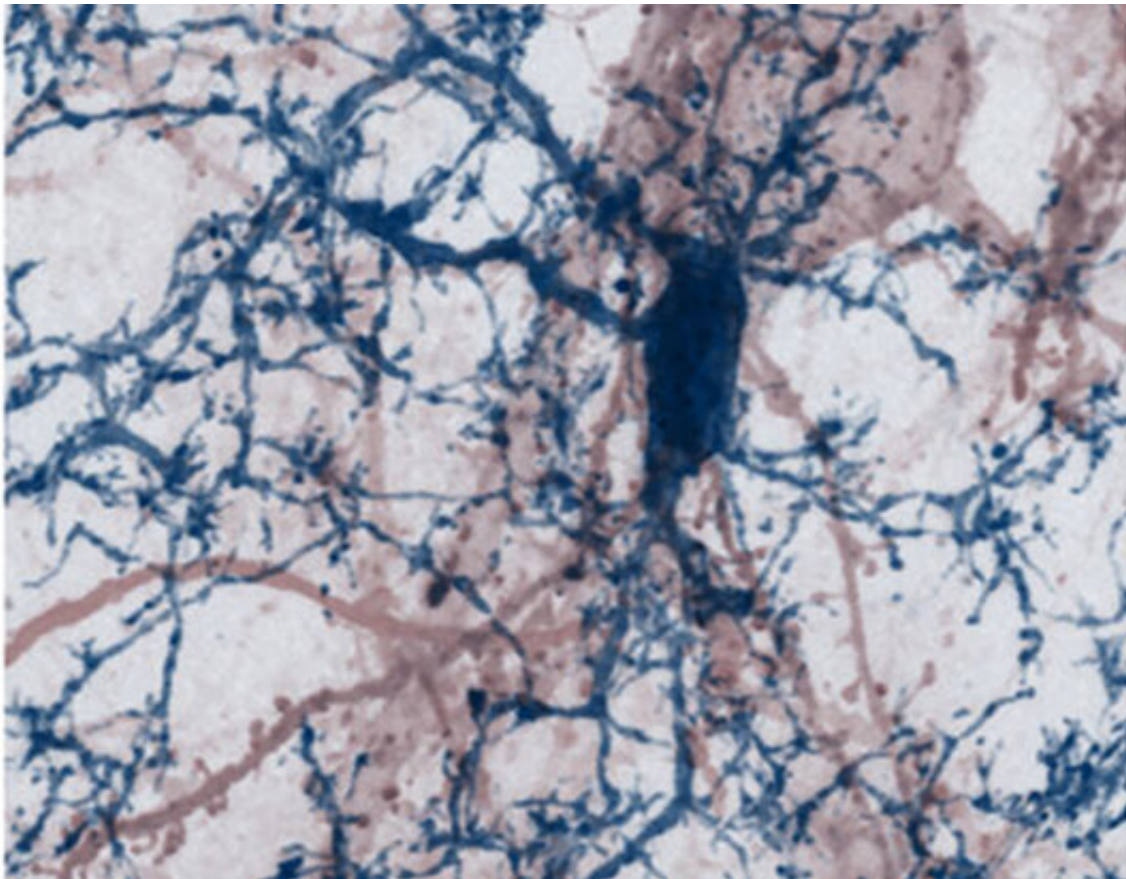


# Inflammatory reactions in multiple sclerosis lead to synapse loss in the cerebral cortex

January 26 2021

---



A nerve cell with its dendritic processes studded by synaptic spines (red) being contacted by brain-resident microglia cell (blue) in a mouse brain. Credit: Misgeld & Kerschensteiner

Multiple sclerosis (MS) is a chronic inflammatory disease that affects

the central nervous system, in which nerve cells are attacked by the patient's own immune system. In many cases, the disease develops into a progressive form, which is characterized by a shift of pathology from the white matter to the gray matter, for instance, to the cerebral cortex. This phase of the disease has so far been difficult to treat and its underlying causes are poorly understood. Now, a research team led by Martin Kerschensteiner, Director of the Institute for Clinical Neuroimmunology at LMU, in cooperation with Thomas Misgeld (Technical University of Munich) and Doron Merkler (University of Geneva), has shown in a mouse model that inflammation of the gray matter leads to a decrease in nerve-cell activity, owing to the (potentially reversible) destruction of synapses. "Targeted inhibition of specific types of immune cells can slow synapse damage down, and offers an interesting new therapeutic approach," Kerschensteiner explains.

Loss of synapses—the structures that serve as functional contacts between nerve cells—is an early indicator of damage to the [cerebral cortex](#) in cases of progressive MS. The researchers therefore suspected that the synapses are the key to the neuronal damage that ensues in this stage of the disease. With the aid of various imaging techniques, the team was able to demonstrate that such widespread loss of synapses can be reproduced in a [mouse model](#) of MS. Moreover, their observations revealed that synaptic spines are destroyed by a specific type of immune cells. "These immune cells preferentially eliminate spines, which contain high levels of calcium. We assume that the inflammation reaction itself triggers an influx of calcium, which destabilizes the spines," says Kerschensteiner. "These changes in late-stage MS are reminiscent of those that can also be observed during the early phases of neurodegeneration," Misgeld adds.

**The disruption of neuronal networks in the brain can be reversible**

The activated immune cells primarily attack excitatory synapses, which are responsible for activating other nerve cells. As a consequence, the level of activity in neural networks decreases. "The [nerve cells](#) are effectively silenced," says Kerschensteiner. "However, much to our surprise, we discovered that this process is reversible in our model."

As soon as the inflammation is resolved, the normal number of [synapses](#) is restored and the neurons once again exhibit their normal patterns of activity. These results contrast with findings in patients with progressive MS, in whom the cerebral cortex is permanently damaged. "Presumably, the mechanisms responsible for recovery cannot come into effect in these patients, because the inflammation is chronic and remains unresolved," says neuropathologist Merkler. "In our model, we induced an acute inflammatory reaction, which is resolved within a few days."

New pharmaceutical agents might be able to specifically inhibit the activation of the immune cells responsible for synapse destruction and could therefore slow the progress of the disease. However, it is crucial that such inhibitors do not completely block the action of these [cells](#), so that they can continue to carry out their essential functions. The authors of the study hope that this concept can help develop therapeutic approaches that will effectively curb the progression of MS.

**More information:** Mehrnoosh Jafari et al. Phagocyte-mediated synapse removal in cortical neuroinflammation is promoted by local calcium accumulation, *Nature Neuroscience* (2021). [DOI: 10.1038/s41593-020-00780-7](https://doi.org/10.1038/s41593-020-00780-7)

Provided by Ludwig Maximilian University of Munich

Citation: Inflammatory reactions in multiple sclerosis lead to synapse loss in the cerebral cortex

(2021, January 26) retrieved 24 April 2024 from

<https://medicalxpress.com/news/2021-01-inflammatory-reactions-multiple-sclerosis-synapse.html>

This document is subject to copyright. Apart from any fair dealing for the purpose of private study or research, no part may be reproduced without the written permission. The content is provided for information purposes only.