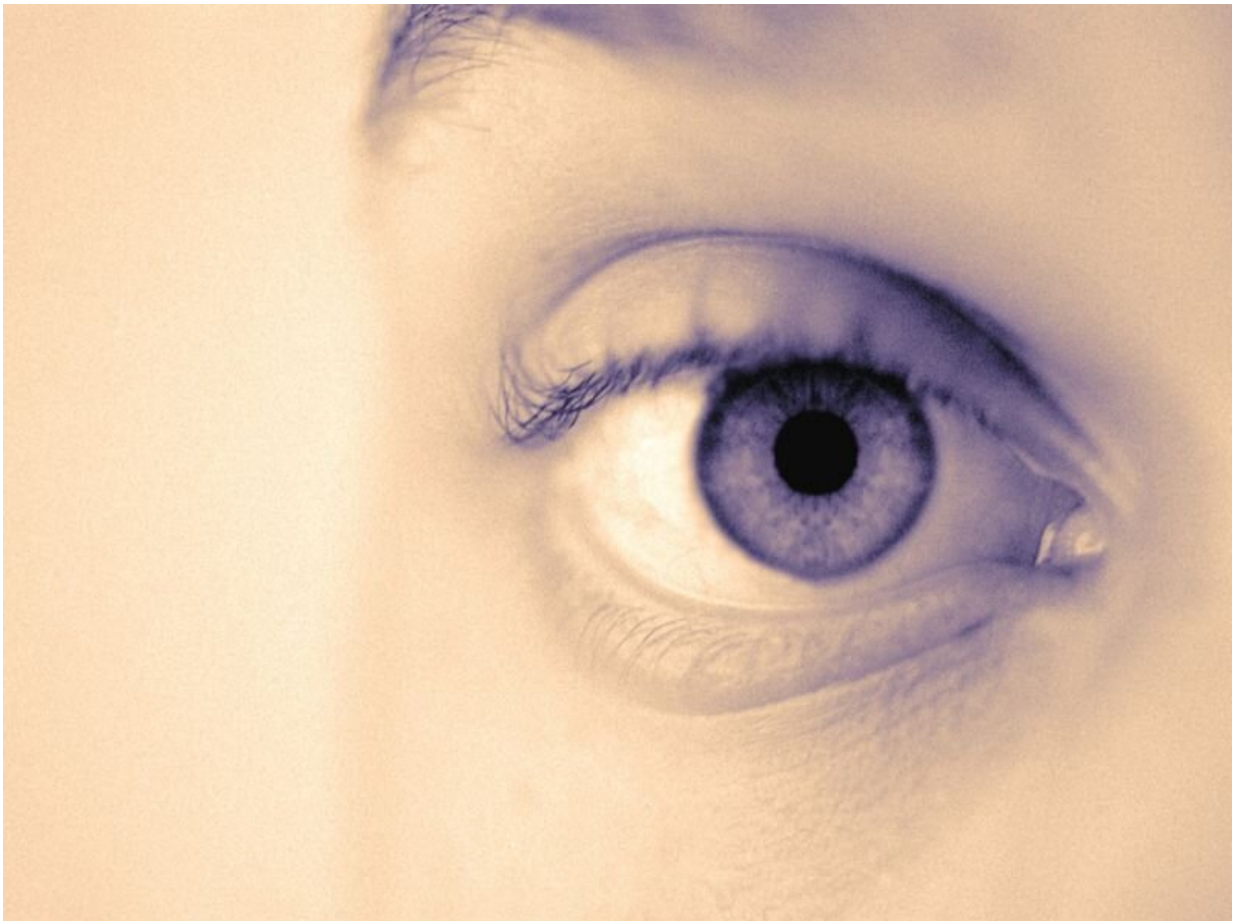


Sustained blindness risk higher with severe diabetic retinopathy at diagnosis

February 3 2021



(HealthDay)—More advanced diabetic retinopathy (DR) at first

diagnosis is a significant risk factor for developing sustained blindness over two years, according to a study published online Jan. 20 in *Diabetes Care*.

Charles C. Wykoff, M.D., Ph.D., from the Blanton Eye Institute in Houston, and colleagues evaluated the association between initial DR severity and risk for blindness in patients with newly diagnosed DR with good vision among 53,535 eyes identified in the American Academy of Ophthalmology Intelligent Research in Sight Registry.

The researchers found that during a mean follow-up of 662.5 days, 1.3 percent of eyes developed sustained blindness. Overall, 10.5 percent of eyes had proliferative DR but made up 26.5 percent (180 of 678) of eyes that developed sustained blindness. Compared with eyes with mild DR at baseline, eyes with moderate nonproliferative DR, severe nonproliferative DR, and proliferative DR at baseline were 2.6, 3.6, and 4.0 times more likely, respectively, to develop sustained blindness two years after DR diagnosis. When adjusting for index characteristics and development of ocular conditions during follow-up, eyes with proliferative DR had an [increased risk](#) for developing sustained blindness versus eyes with mild nonproliferative DR at baseline (hazard ratio, 2.26).

"Despite [public health guidelines](#) designed to increase eye screening in patients with diabetes, [patients](#) are still presenting with advanced DR," the authors write. "The current results support the continued need for improved DR screening, patient education, and care coordination to reduce the burden of diabetes-associated [blindness](#) in the United States."

Several authors disclosed financial ties to the pharmaceutical industry.

More information: [Abstract/Full Text \(subscription or payment may be required\)](#)

Copyright © 2020 [HealthDay](#). All rights reserved.

Citation: Sustained blindness risk higher with severe diabetic retinopathy at diagnosis (2021, February 3) retrieved 29 June 2024 from <https://medicalxpress.com/news/2021-02-sustained-higher-severe-diabetic-retinopathy.html>

This document is subject to copyright. Apart from any fair dealing for the purpose of private study or research, no part may be reproduced without the written permission. The content is provided for information purposes only.