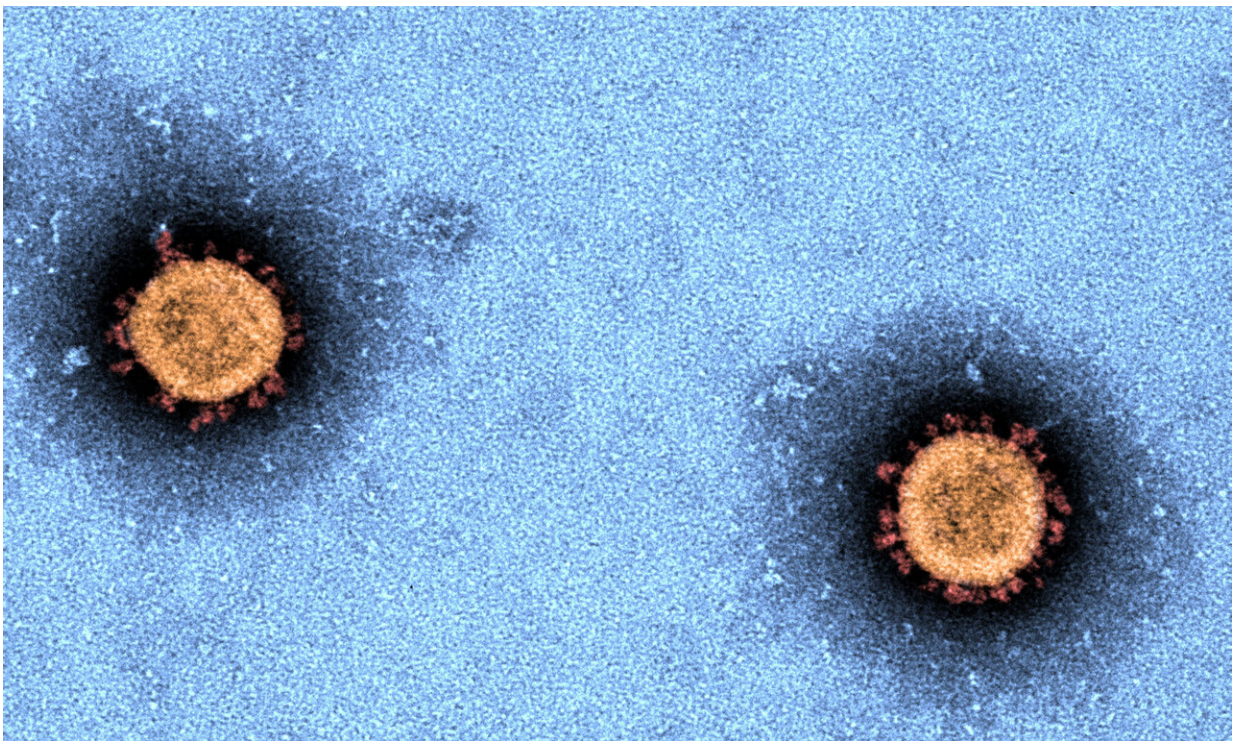


First antigen test pilot in low prevalence COVID-19 settings signals challenges for rollout

March 4 2021, by Rebecca Elliott



Electron microscopy image of SARS-CoV-2 virus. Credit: Dr Jason Roberts

Melbourne researchers who conducted a pilot to study the performance and feasibility of utilizing antigen tests have identified several practical challenges in implementation for countries with a low COVID-19

prevalence.

Antigen tests detect the SARS-CoV-2 (the virus that causes COVID-19 disease) viral protein directly from clinical samples, whereas the 'gold standard' PCR tests detect the viral RNA, making them significantly more sensitive. Given their ability to rapidly provide a result, accessibility and relatively low cost, [antigen tests](#) have been touted as a means of increasing population-level surveillance testing and enabling testing at or near the point-of-care.

The study, published in *The Lancet Regional Health—Western Pacific* today, recruited participants presenting for COVID-19 testing at three Melbourne metropolitan hospitals—The Royal Melbourne Hospital, Austin Health and Monash Health—during a period of low COVID-19 prevalence, 28 September to 14 November, 2020. The Abbott PanBio™ COVID-19 antigen point-of-care [test](#)—one of two antigen tests approved by the World Health Organization for emergency use and approved for supply by Australia's Therapeutic Goods Administration—was performed alongside the gold standard PCR test. Additional laboratory studies were also performed.

The specificity of the Abbott PanBio™ COVID-19 antigen test was 99.96%, whereas sensitivity amongst participants with PCR-confirmed infection was dependent upon the duration of symptoms reported.

Co-lead author on the study, Professor Deborah Williamson, Director of The Royal Melbourne Hospital's Department of Microbiology and Deputy Director of the Microbiological Diagnostic Unit Public Health Laboratory at the Doherty Institute, said they found the antigen tests performed best in the first few days after symptom onset, which was consistent with the intended use of the test, and noted these tests had shown utility in settings with a high-prevalence of COVID-19, such as the United Kingdom and United States.

"However, we found many challenges around implementation of these tests, ranging from how to conduct the tests in a [safe environment](#), choosing the population to test—symptomatic or asymptomatic—given the occurrence of false positives and negatives, to the additional waste that's created by using the device," Professor Williamson explained.

"Given the [high specificity](#), antigen-based tests may be most useful in rapidly triaging public health and [hospital](#) resources while expediting confirmatory PCR testing.

"But considering the limitations in test sensitivity and the potential for rapid transmission in susceptible populations, particularly in hospital settings, careful consideration is required for implementation of antigen testing in a low prevalence setting.

"As such, we have developed a framework, which we hope will assist with the appropriate planning to overcome the logistical, governance, regulatory and implementation challenges we identified for scaled-up antigen testing."

First author on the paper, Dr. Stephen Muhi, an infectious diseases physician at The Royal Melbourne Hospital said: "The study was a great opportunity to evaluate the test across three major metropolitan hospitals during a period of minimal COVID-19 community transmission, identifying important implications for clinical care."

More information: Stephen Muhi et al. Multi-site assessment of rapid, point-of-care antigen testing for the diagnosis of SARS-CoV-2 infection in a low-prevalence setting: A validation and implementation study, *The Lancet Regional Health—Western Pacific* (2021). [DOI: 10.1016/j.lanwpc.2021.100115](https://doi.org/10.1016/j.lanwpc.2021.100115)

Provided by University of Melbourne

Citation: First antigen test pilot in low prevalence COVID-19 settings signals challenges for rollout (2021, March 4) retrieved 11 May 2024 from

<https://medicalxpress.com/news/2021-03-antigen-prevalence-covid-rollout.html>

This document is subject to copyright. Apart from any fair dealing for the purpose of private study or research, no part may be reproduced without the written permission. The content is provided for information purposes only.