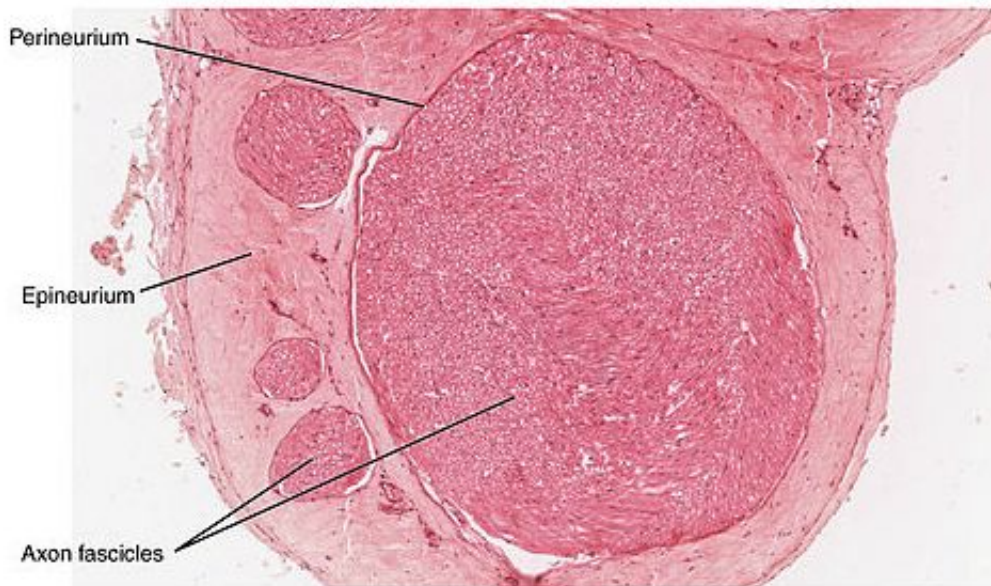


Born to die young: The early death of nerve cells is crucial to form healthy brains

March 30 2021



Cross-section of a nerve. Credit: OpenStax College/Wikipedia

Computer scientists at the University of Surrey have created a groundbreaking model that could improve our understanding of developmental disorders such as autism.

Scientists have long tried to better understand how the cerebral cortex and its layers develop, with pathologies such as autism, schizophrenia and epilepsy linked to this process.

In a paper published by the journal *Cerebral Cortex*, scientists from Surrey, Newcastle University, and Nottingham University detail how they developed and used a [computational model](#) to simulate [cell division](#), [cell migration](#) and apoptosis ([cell death](#)) in the hope of understanding how these processes affect the development of the brain.

With the help of their computer model, the researchers reproduced a wide number of cerebral structures to study—from rats, to macaques, to humans.

The team also observed that slight changes in how cells perform division and apoptosis lead to the development of cortical structures found in neurodevelopmental disorders such as autism, polymicrogyria and subcortical band heterotopia.

Dr. Roman Bauer, Engineering and Physical Sciences Research Council research fellow and lead author of the study from the University of Surrey, said: "We are working towards a comprehensive computational model of the [cerebral cortex](#) and how it develops—taking into account how neurons behave and organize themselves in our brains. It is clear to us that computational models have a crucial role to play in helping us to comprehensively understand the complex biological processes that lead to developmental disorders."

Marcus Kaiser, professor of neuroinformatics at the University of Nottingham and senior author of the study, said: "A large proportion of nerve cells dies before birth, but it was unclear why these cells are just born to die at such an early stage. The team's results showed that cell death plays an essential role in developing the brain, as it influences the thickness of the cortex's layers, variety and layer cell density."

More information: Roman Bauer et al. Creative Destruction: A Basic Computational Model of Cortical Layer Formation, *Cerebral Cortex*

(2021). [DOI: 10.1093/cercor/bhab003](https://doi.org/10.1093/cercor/bhab003)

Provided by University of Surrey

Citation: Born to die young: The early death of nerve cells is crucial to form healthy brains (2021, March 30) retrieved 4 May 2024 from <https://medicalxpress.com/news/2021-03-born-die-young-early-death.html>

This document is subject to copyright. Apart from any fair dealing for the purpose of private study or research, no part may be reproduced without the written permission. The content is provided for information purposes only.