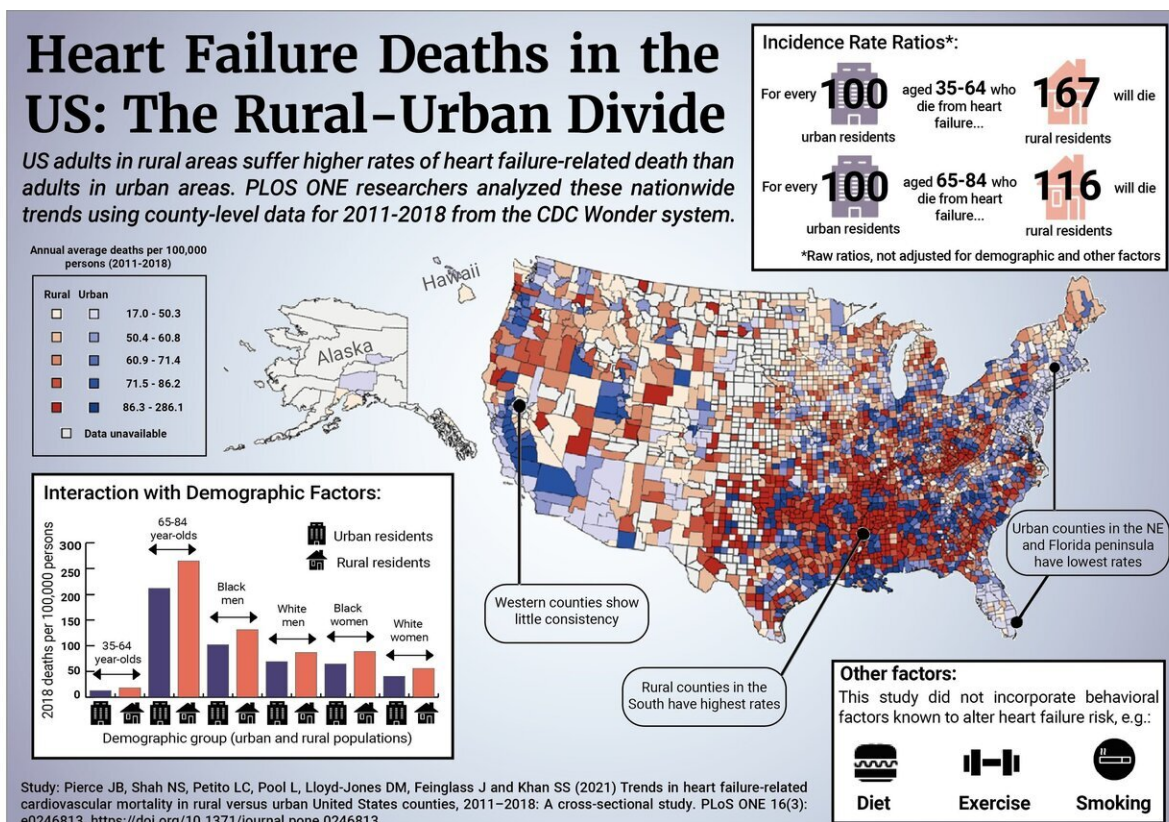


Heart failure-related death rates higher in rural versus urban US counties

March 3 2021



Heart Failure Deaths in the US: The Rural-Urban Divide Credit: Beth Baker, PLOS, CC-BY 4.0 (CC-BY 4.0, creativecommons.org/licenses/by/4.0/)

A nationwide analysis shows that, between 2011 and 2018, adults in rural counties experienced higher rates of death related to heart failure than

adults in urban counties. Jacob Pierce, Sadiya Khan, and colleagues at Northwestern University Feinberg School of Medicine in Illinois present their findings in the open-access journal *PLOS ONE* on March 3, 2021.

Previous research has shown that [cardiovascular disease](#) is more prevalent among adults living in rural U.S. counties than those in urban counties, and that deaths attributed to [heart](#) failure have risen nationwide since 2011. However, no prior studies have quantified differences in heart failure deaths in rural compared with urban counties.

To address that gap, Pierce and colleagues analyzed nationwide, county-level data from the Centers for Disease Control and Prevention on deaths between 2011 and 2018 for which cardiovascular disease was reported to be the underlying cause of [death](#), and heart failure a contributing cause. The data covered adults aged 35 to 84.

They found that adults in rural counties, especially in the South, consistently experienced higher rates of heart failure-related death than those in urban counties. In 2018, for instance, 73.2 heart failure-related deaths occurred per 100,000 adults in rural counties versus 57.2 in [urban counties](#). However, both urban and rural counties experienced increased heart failure-related deaths between 2011 and 2018, with greater increases for adults aged 35 to 64 than for those aged 65 to 84.

The researchers also examined county-level factors that could contribute to the observed urban-rural differences, including socioeconomic and demographic factors, clinical risk factors (such as diabetes or obesity), and geographical physician density. Socioeconomic factors and clinical risk factors appeared to be particularly significant contributors to the urban-rural divide—most strikingly, mortality in young black men showed the largest increase over the study period at an average of +6.1% (95% CI: 3.7 to 8.5%) per year.

To address the observed disparities, these findings suggest the need for extensive efforts that target health and economic policy, socioeconomic disparities, access to care, and clinical and behavioral risk factors. Further research could examine even finer geographical scales and incorporate data on behavioral risk factors, such as smoking and diet, which were not publicly available for use in this study.

The authors add: "Significant geographic variation exists in rates of heart failure mortality across the US with higher rates in rural compared with urban areas. Excess burden of [heart failure](#) mortality has increased faster for younger adults (35-64 years) in both rural and urban areas between 2011-2018."

More information: Pierce JB, Shah NS, Petito LC, Pool L, Lloyd-Jones DM, Feinglass J, et al. (2021) Trends in heart failure-related cardiovascular mortality in rural versus urban United States counties, 2011-2018: A cross-sectional study. *PLoS ONE* 16(3): e0246813. doi.org/10.1371/journal.pone.0246813

Provided by Public Library of Science

Citation: Heart failure-related death rates higher in rural versus urban US counties (2021, March 3) retrieved 28 April 2024 from <https://medicalxpress.com/news/2021-03-heart-failure-related-death-higher-rural.html>

This document is subject to copyright. Apart from any fair dealing for the purpose of private study or research, no part may be reproduced without the written permission. The content is provided for information purposes only.