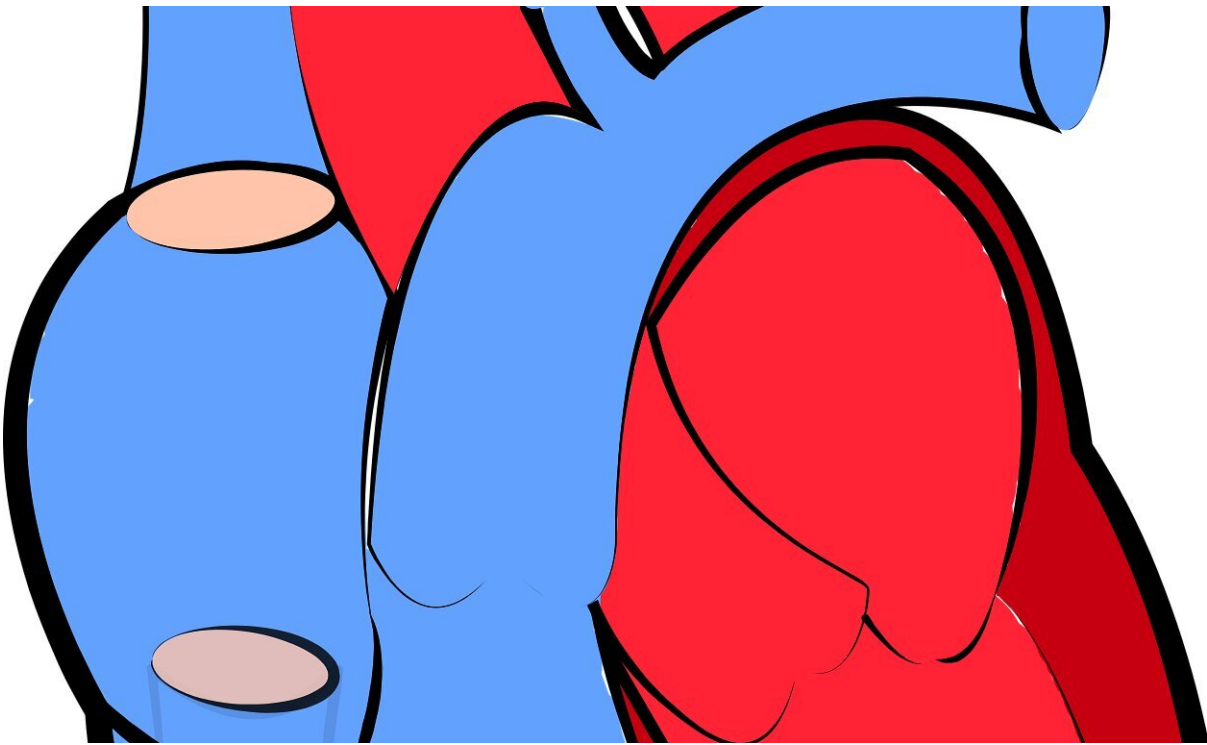


New diagnosis scores make it easier to identify heart failure with preserved ejection fraction

April 2 2021, by Adam Pope



Credit: CC0 Public Domain

In a recent study published in the *ESC Heart Failure* by University of Alabama at Birmingham researchers, two newly recommended scores are very effective in diagnosing heart failure with preserved ejection

fraction, a type of heart failure that is challenging to detect. The scores may also be helpful to predict long-term outcomes in these patients.

Heart failure is a contributing cause of death in nearly 14 percent of all deaths in the United States and costs the nation about \$31 billion a year. HFpEF, a type of [heart failure](#), is a highly prevalent condition and accounts for nearly half of the nearly 6.2 million [heart failure patients](#) in the United States. Despite its being ubiquitous, HFpEF is challenging to diagnose and identify early.

Vibhu Parcha, M.D., a clinical research fellow in UAB's Division of Cardiovascular Disease and the first author of this study, explained that HFpEF is like a syndrome with patients having numerous coexisting medical conditions that contribute to the worsening of the heart.

"We commonly understand heart failure as a condition when the heart is unable to pump out as much blood as it is receiving," Parcha said. "It is more challenging to diagnose HFpEF because the problem lies with the filling of the [heart](#) with blood instead of its output. The condition is often not correctly diagnosed among patients coming to hospitals or clinics with unexplained shortness of breath that is caused by worsening of the HFpEF."

The two scores were developed to help in the diagnosis of this disease in outpatient setting. The [H2FPEF score](#) was developed by cardiologists at Mayo Clinic, and the [HFA-PEFF score](#) was developed by a consensus recommendation by the European Society of Cardiology. The two scores, which were developed in parallel, had not been directly compared previously.

Parcha and his investigative team analyzed data from the participants of prior HFpEF [clinical trials](#) and the [Atherosclerosis Risk in Communities Study](#) participants with shortness of breath not explained with usual

causes. The investigators applied the scores in these patients to see whether the scores were able to accurately rule out or rule in HFpEF using the two scores.

"We found that using a rule-out approach both the scores could successfully negate the diagnosis of HFpEF in patients with an approximate 99 percent success rate," Parcha said. "While using a rule-in approach, the American H2FPEF score was approximately 90 percent successful, while the European HFA-PEFF score was approximately 80 percent successful in identifying those with HFpEF. We also saw a signal for these scores being predictive of poor long-term outcomes in those with a high level of this score, which requires replication in independent studies."

Parcha also noted that the H2FPEF score was reflective of the underlying functional or exercise capacity of HFpEF patients. This is important since the determination of the functional capacity in these patients with multiple comorbidities is quite challenging and yet important to understand the disease progression.

"In the field of medicine, the tackling of HFpEF burden in the United States is a major challenge, which starts with first accurately diagnosing the disease," said senior author Pankaj Arora, M.D., a physician-scientist in the UAB Division of Cardiovascular Disease. "The two newly developed scores are simple and easy to use at the bedside and in emergency rooms without any requirements for invasive and more complex measures."

Arora added that this study shows that researchers now have two validated, robust and easy-to-use methods to identify the patients with HFpEF early in the disease.

"The scores can be used easily in nearly all of the clinic rooms across the

nation," Arora said. "This will allow us to manage the HFpEF patients more closely by diagnosing them early and contributing to improve their lives. As a community, we lack a gold standard and easy-to-use approach for diagnosing HFpEF. The wider adoption of these robust diagnostic scores will help in mitigating the large HFpEF disease burden in the United States. With the recent approval [of medications for HFpEF by FDA](#), we now have a growing arsenal to battle this commonly missed [disease](#)."

More information: Vibhu Parcha et al. Diagnostic and prognostic implications of heart failure with preserved ejection fraction scoring systems, *ESC Heart Failure* (2021). [DOI: 10.1002/ehf2.13288](https://doi.org/10.1002/ehf2.13288)

Yogesh N.V. Reddy et al. A Simple, Evidence-Based Approach to Help Guide Diagnosis of Heart Failure With Preserved Ejection Fraction, *Circulation* (2018). [DOI: 10.1161/CIRCULATIONAHA.118.034646](https://doi.org/10.1161/CIRCULATIONAHA.118.034646)

Bertram Pitt et al. Spironolactone for Heart Failure with Preserved Ejection Fraction, *New England Journal of Medicine* (2014). [DOI: 10.1056/nejmoa1313731](https://doi.org/10.1056/nejmoa1313731)

Provided by University of Alabama at Birmingham

Citation: New diagnosis scores make it easier to identify heart failure with preserved ejection fraction (2021, April 2) retrieved 18 April 2024 from <https://medicalxpress.com/news/2021-04-diagnosis-scores-easier-heart-failure.html>

This document is subject to copyright. Apart from any fair dealing for the purpose of private study or research, no part may be reproduced without the written permission. The content is provided for information purposes only.