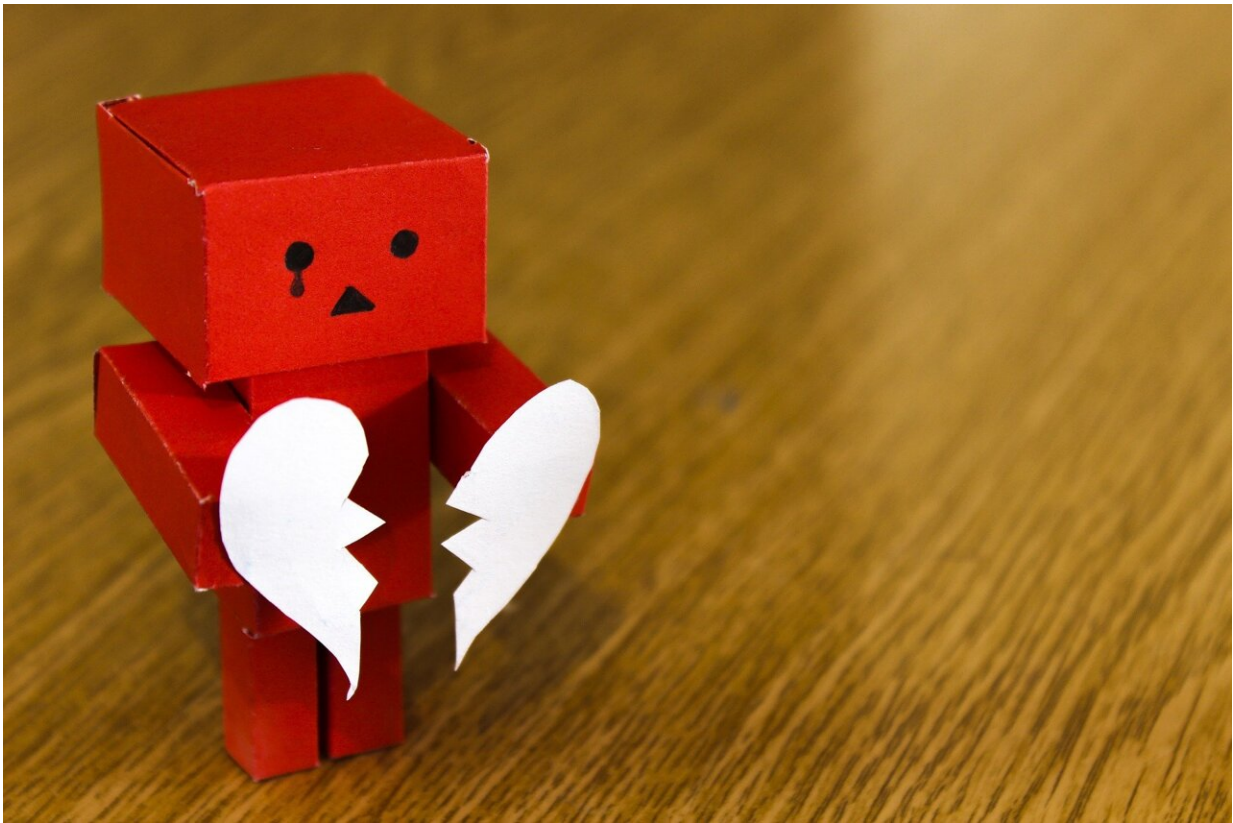


Early MR scans found more people with broken-heart syndrome

April 28 2021



Credit: Pixabay/CC0 Public Domain

In almost 10% of myocardial infarctions, no obvious cause in the coronary artery can be found. Some of the patients are diagnosed with broken-heart syndrome, while others are left without a diagnosis. A new

study from Karolinska Institutet in Sweden suggests that early magnetic resonance (MR) imaging of the heart can greatly increase the rate of diagnosis. The study has been published in the journal JACC Cardiovascular Imaging.

Myocardial infarction is one of the most [common diseases](#) in the West, and is usually caused by a blood clot that blocks the [coronary artery](#) on the [heart](#)'s surface. However, in up to 10% of all myocardial infarctions, no obvious cause in the coronary artery is found. Such patients are given the working [diagnosis](#) MINOCA ([myocardial infarction](#) with non-obstructive coronary arteries), which can subsequently lead to one of several diagnoses.

The majority of the patients are women, many of whom are diagnosed with takotsubo cardiomyopathy (broken-heart syndrome). This is a condition characterized by reduced heart function that is probably related to stress and that presents the same symptoms as a regular heart attack.

Associated with mental stress

"Around 80 to 90% of broken-heart sufferers are women, and the disease is associated with mental stress," says principal investigator Per Tornvall, senior physician and professor at the Department of Clinical Science and Education, Södersjukhuset (Stockholm South General Hospital), Karolinska Institutet. "There also seems to be a link to hypersensitivity towards stress caused by low estrogen levels. Unfortunately, research on the investigation and treatment of myocardial infarction is often done on men, while female heart disease is less studied."

Cardiovascular magnetic resonance (CMR) is often done when examining patients with MINOCA. CMR approximately ten days after

onset can result in a diagnosis in under half the patients, normally takotsubo or myocarditis (inflammation of the heart muscle), according to an earlier study of 150 patients from Karolinska Institutet. The same researchers have now tested a new, more sensitive CMR technique two to four days after onset on a comparable group of 148 patients with a median age of 58. They found that a full 77% of the patients could be given a diagnosis (35% of takotsubo and 17% of myocardial inflammation, compared with 19 and 7%, respectively, in the first study).

The right treatment for more patients

"We don't know how much effect the improved CMR technique has, but the results suggest that with early examination more patients can get a correct diagnosis and therefore the right treatment," says Professor Tornvall. "The next step is for us to develop the CMR examination with pharmacological stress of the heart. This will enable us to study the smallest of the blood vessels and hopefully find a cause for the 23% who received no diagnosis."

The study was conducted in close collaboration with the heart-MR department, clinical physiology, at Karolinska University Hospital and was financed by the Swedish Research Council, Region Stockholm and the Swedish Heart and Lung Foundation. Co-authors Peder Sörensson, Magnus Lundin and Martin Ugander are affiliated with Karolinska University Hospital, which has a research agreement with Siemens Healthineers regarding CMR. Jonas Spaak has received personal fees for the past three years from AstraZeneca, Vifor Pharma and Novo Nordisk, all unrelated to the present study.

More information: Peder Sörensson et al. Early Comprehensive Cardiovascular Magnetic Resonance Imaging in Patients With Myocardial Infarction With Nonobstructive Coronary Arteries, *JACC: Cardiovascular Imaging* (2021). [DOI: 10.1016/j.jcmg.2021.02.021](https://doi.org/10.1016/j.jcmg.2021.02.021)

Provided by Karolinska Institutet

Citation: Early MR scans found more people with broken-heart syndrome (2021, April 28)
retrieved 2 May 2024 from

<https://medicalxpress.com/news/2021-04-early-scans-people-broken-heart-syndrome.html>

This document is subject to copyright. Apart from any fair dealing for the purpose of private study or research, no part may be reproduced without the written permission. The content is provided for information purposes only.