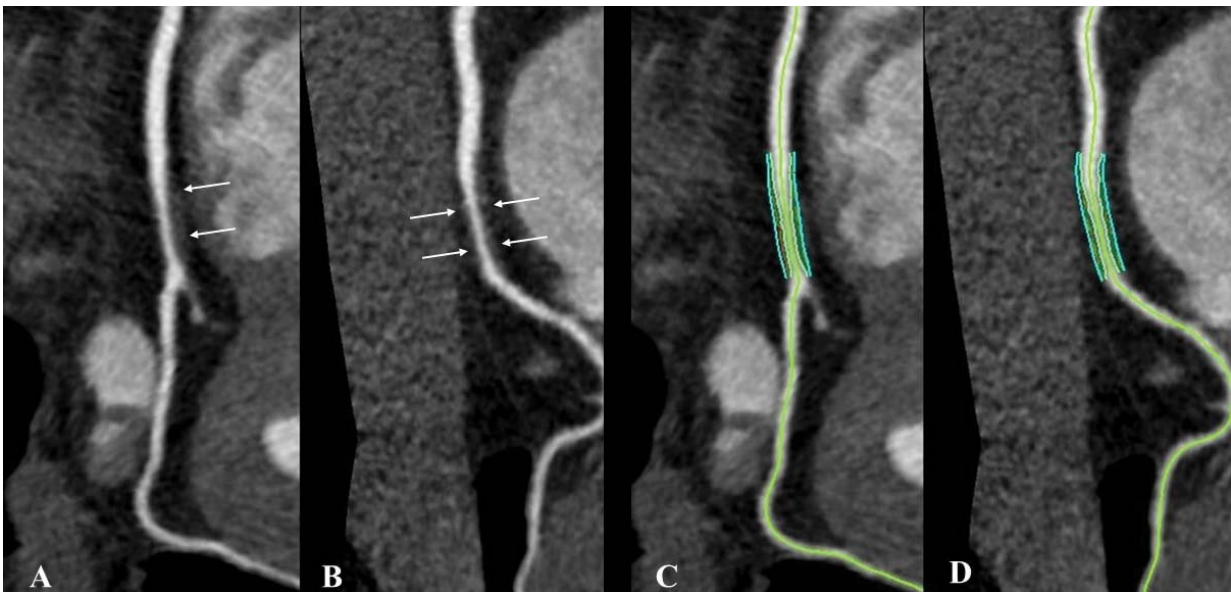


Noncalcified coronary plaque burden higher in people with HIV

April 20 2021



Noncalcified coronary plaque in an asymptomatic 52-year-old man living with HIV with a 10-year Framingham risk of 5%. Images show 256-section contrast-enhanced coronary CT angiography with electrocardiographic gating and curve reformat. A, B, CT scan shows a smooth noncalcified plaque in the right coronary artery (arrows) with 70%-80% stenosis. C, D, The right coronary artery plaque volume was 130 mm³ (cyan lines). Credit: Radiological Society of North America

People living with human immunodeficiency virus (HIV) and without known cardiovascular disease have two to three times the noncalcified

coronary plaque burden of non-HIV healthy volunteers, according to a study from Canada published in *Radiology*. Researchers said the results underscore the importance of a heart-healthy lifestyle in people living with HIV.

HIV/AIDS emerged as a major public health crisis in the 1980s. Disease-related mortality peaked in the mid-1990s and has been dropping since, thanks in large part to [antiretroviral therapy](#), which does not cure the [disease](#) but helps control it.

Today, people with HIV infection live longer and are increasingly subject to age-related diseases, such as [coronary artery disease](#). Studies from North America and Europe have shown a greater risk of heart attacks in people living with HIV compared with the general population, even after adjustment for risk factors. The reasons for this are not entirely known.

For the new prospective study, researchers compared the burden and CT characteristics of coronary [plaque](#) in 265 participants, including 181 asymptomatic people living with HIV without known cardiovascular disease and 84 non-HIV healthy volunteers.

All 265 participants underwent coronary artery calcium scoring, a CT-based assessment that provides information on the presence and amount of calcified plaque in the arteries of the heart. Most of the participants also had coronary CT angiography, a noninvasive imaging option capable of quantifying and characterizing coronary plaque and predicting the risk of adverse cardiovascular events like a heart attack. Image assessors who had been blinded to the clinical characteristics of the participants and their HIV status used the CT angiography results to categorize the coronary plaques as calcified, noncalcified or mixed.

There was no difference between the two groups in coronary artery

calcium score and overall plaque prevalence. The median 10-year Framingham Risk Score, a commonly used measure to estimate the risk of coronary artery disease, was also similar.

However, noncalcified plaque prevalence and volume were two to three times higher at coronary CT angiography in people living with HIV compared with non-HIV [healthy volunteers](#) after adjustment for cardiovascular risk factors. Noncalcified plaque may be more prone to rupture than calcified plaque.

"Our study shows that noncalcified coronary plaque is increased in people living with HIV," said study lead author Carl Chartrand-Lefebvre, M.D., M.Sc., from the Radiology Department at the Centre hospitalier de l'Université de Montréal (CHUM) in Montreal. "And noncalcified plaque has previously been shown to be associated with worse cardiovascular outcomes than calcified or mixed plaques."

Calcified plaque frequency was reduced in people living with HIV. Treatment with protease inhibitors was associated with higher volume of overall and mixed plaque.

According to Dr. Chartrand-Lefebvre, the differences in plaque burden between the two groups are likely due to a number of factors, including the antiretroviral therapy.

"Multiple studies suggest that there is probably an impact of antiretroviral therapy that could increase the risk of coronary artery disease, although there are far more advantages for people living with HIV to be on antiretroviral therapy, instead of not taking it," he said.

The study results suggest that the adoption of a healthy lifestyle, crucial to preventing atherosclerotic disease in the general population, may be especially important for people living with HIV. Dr. Chartrand-Lefebvre

recommended that people living with HIV be aware of their cardiovascular [risk factors](#) such as smoking, diabetes, high blood pressure, obesity and lack of physical exercise. They should also discuss with their physicians the best ways to prevent [cardiovascular disease](#).

"For radiologists, these results suggest that coronary CT angiography interpretation in people living with HIV should probably include quantification of coronary plaque by subtypes to allow better cardiovascular risk stratification," Dr. Chartrand-Lefebvre said.

More information: Irina Boldeanu et al. Prevalence and Characterization of Subclinical Coronary Atherosclerotic Plaque with CT among Individuals with HIV: Results from the Canadian HIV and Aging Cohort Study *Radiology* Apr 20 2021
doi.org/10.1148/radiol.2021203297

Provided by Radiological Society of North America

Citation: Noncalcified coronary plaque burden higher in people with HIV (2021, April 20)
retrieved 23 April 2024 from
<https://medicalxpress.com/news/2021-04-noncalcified-coronary-plaque-burden-higher.html>

<p>This document is subject to copyright. Apart from any fair dealing for the purpose of private study or research, no part may be reproduced without the written permission. The content is provided for information purposes only.</p>
--