

# Leukemia treatment can bait and capture cells in hiding, research shows

May 27 2021

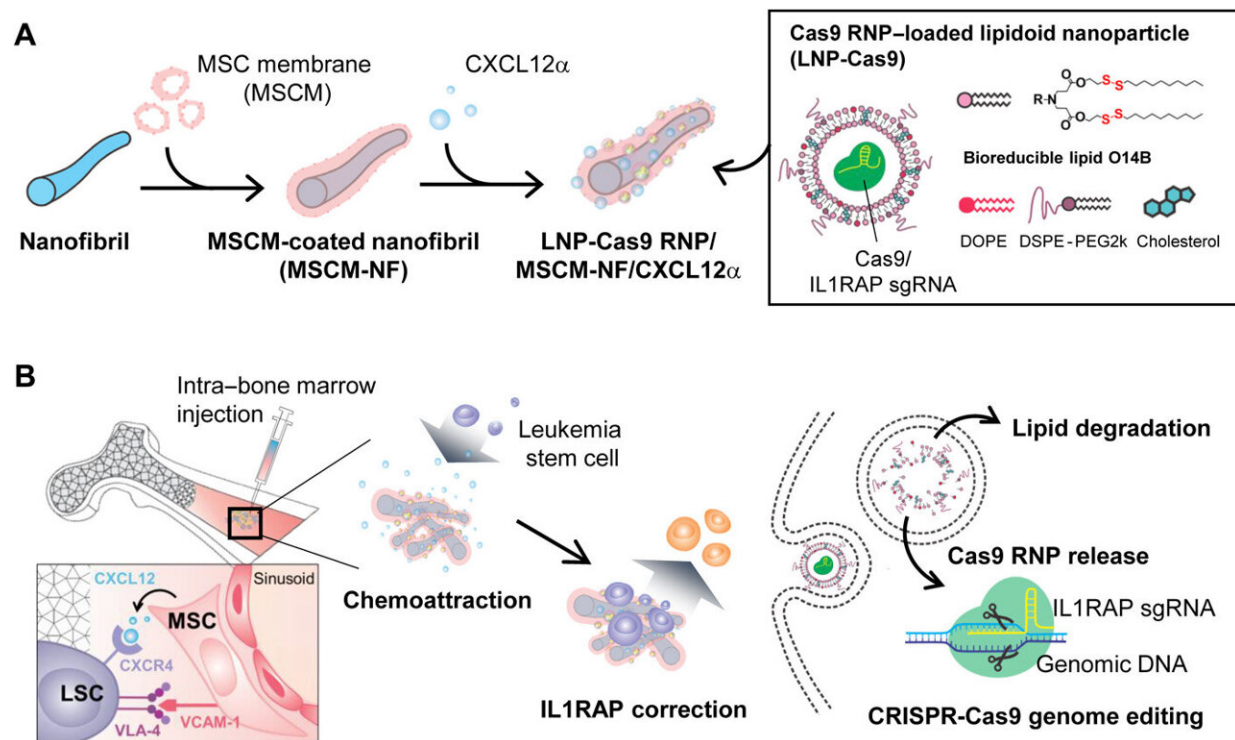


Fig. 1 Schematic of the Cas9 RNP delivery system. (A) Lipidoid nanoparticle (LNP)-encapsulated Cas9 RNP delivery system. PCL nanofibril (NF) that mimic the bone tissue environment were coated with mesenchymal stem cell membrane (MSCM) and were loaded with CXCL12 $\alpha$  cytokine and LNP-coated Cas9 RNP. (B) The LNP-Cas9 RNP/MSCM-NF/CXCL12 $\alpha$  complex can be injected into the bone marrow cavity to induce chemoattraction of leukemia blasts or LSCs, to more effectively deliver the gene editing cargo to these cells.

The latest method under investigation to attack leukemia is a bit like exterminating cockroaches: It's a three-step process using cutting-edge technology to bait, trap, and kill leukemia cells at their root.

A paper published in *Sciences Advances*, led by Wilmot Cancer Institute researchers, describes the process and the significance for patients who face [acute myeloid leukemia](#) (AML), an aggressive type of blood cancer in which only 28 percent of people survive five years.

Although the research is early—it has only been tested in mice and in human cell cultures—it's quite different from standard methods such as chemotherapy because it allows scientists to deliver treatment that can correct faulty genes that fuel the cancer, said Tzu-Chieh (Kate) Ho, Ph.D., the paper's first author and a research assistant professor in Hematology/Oncology at Wilmot.

Her mentor, Michael Becker, M.D., dean's professor of Hematology/Oncology at Wilmot, is co-corresponding author.

Ho's system to reach the root of leukemia uses CRISPR technology, which can edit genes inside a cell. In the article, she describes a novel way of baiting leukemia stem cells out of hiding, and then destroying them with a protein-RNA complex that enters the nucleus of the cancer cells and edits them so that they cannot survive.

Being able to target leukemia stem cells is important; the disease is known to relapse even after a long remission, as stem cells awaken from dormancy. For this reason, [modern science](#) is geared toward using the most advanced materials to seek and directly wipe out the stem cell population.

When Ho was conducting research toward her doctorate degree at the University of Rochester Medical Center several years ago, she

discovered an important protein, IL 1RAP, on the surface of leukemia-initiating [cells](#) that could be a target for [anti-cancer drugs](#).

Ho went on to Memorial Sloan Kettering and Columbia University in New York, to develop innovative mouse models and biomedical engineering materials that can deliver drugs more efficiently and directly to protein targets such as IL 1RAP. A year ago, she returned to Wilmot to work in Becker's lab, which has been studying malignant [leukemia](#) stem cell populations for several years.

"We are grateful to have Dr. Ho and look forward to more exciting developments in the near future," Becker said.

Clinical trials in patients are still a couple of years away. Researchers are also developing relationships with drug companies to find agents that can target the IL 1RAP protein.

**More information:** Tzu-Chieh Ho et al, Scaffold-mediated CRISPR-Cas9 delivery system for acute myeloid leukemia therapy, *Science Advances* (2021). [DOI: 10.1126/sciadv.abg3217](https://doi.org/10.1126/sciadv.abg3217)

Provided by University of Rochester Medical Center

Citation: Leukemia treatment can bait and capture cells in hiding, research shows (2021, May 27) retrieved 27 April 2024 from <https://medicalxpress.com/news/2021-05-leukemia-treatment-bait-capture-cells.html>

|   |
|---|
| This document is subject to copyright. Apart from any fair dealing for the purpose of private study or research, no part may be reproduced without the written permission. The content is provided for information purposes only. |
|---|