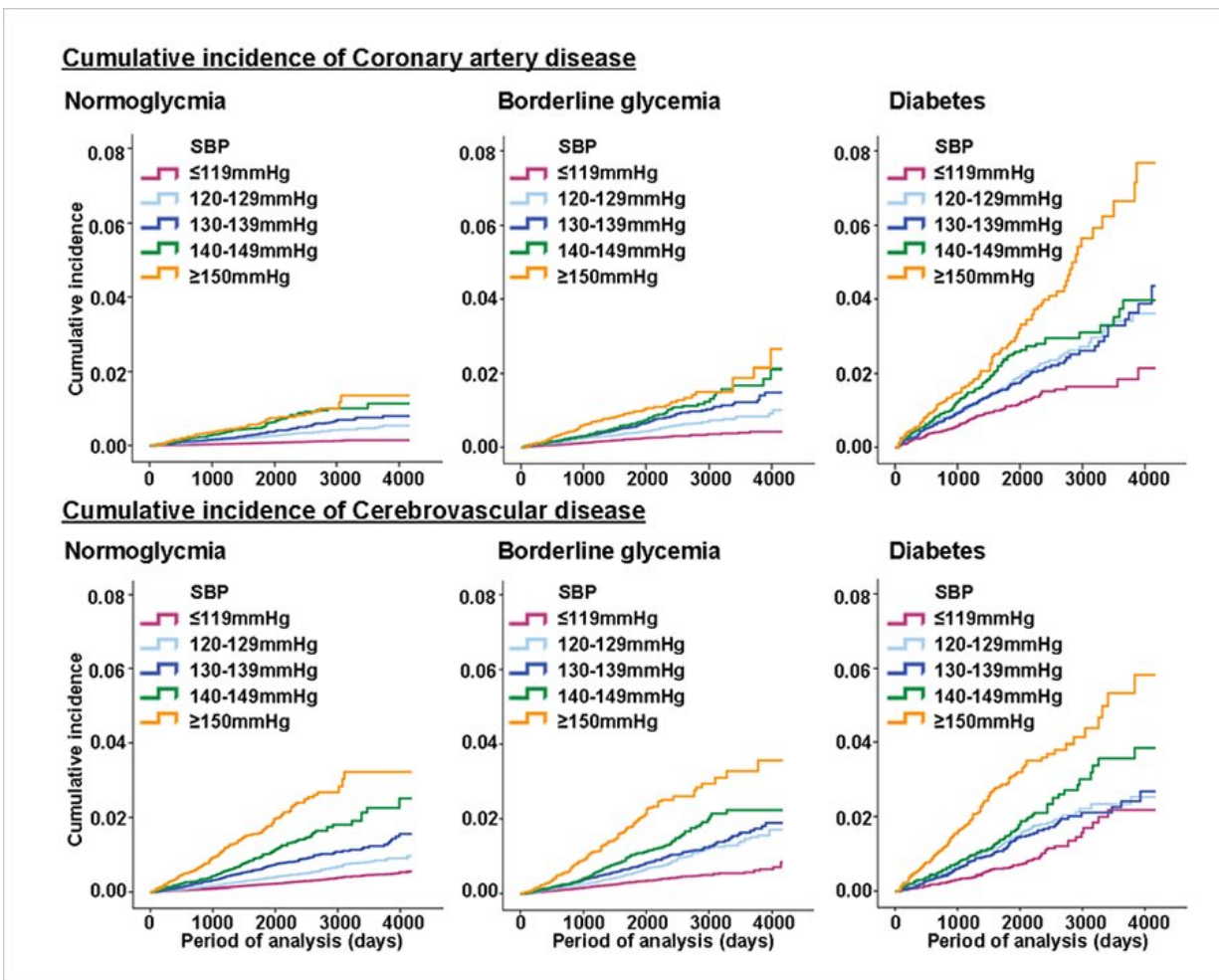


Systolic blood pressure above 120 mmHg increases rate of cardiovascular disease

June 23 2021



Rates of CAD and CVD. Credit: Niigata University

An estimated 1.13 billion people worldwide have hypertension or high blood pressure, and two-thirds of these individuals are living in low- and middle-income countries. Blood pressure is the force manifested by circulating blood against the walls of the body's arteries, the major blood vessels in the body. Hypertension is when blood pressure is too high.

Blood pressure is written as two numbers. The first (systolic) number represents the pressure in [blood vessels](#) when the heart contracts or beats. The second (diastolic) number represents the pressure in the vessels when the heart rests between beats. Hypertension is diagnosed if, when it is measured on two different days, the systolic [blood pressure](#) (SBP) readings on both days is ≥ 140 mmHg and/or the [diastolic blood pressure](#) (DBP) readings on both days is ≥ 90 mmHg.

Worldwide, [high blood pressure](#) is a common and strong risk factor for the development of cardiovascular disease. As reported by previous studies in Asia and elsewhere, as the level of SBP rises, the risk of developing cardiovascular disease increases, too. Similarly, the likelihood of dying from a cardiovascular event increases as the SBP rises. However, whether these observations hold for increases in DBP is not known. Moreover, although a high blood glucose status is itself associated with a high likelihood for the development of cardiovascular disease, it is not known whether the blood glucose status plays any role in the relationship between high blood pressure and cardiovascular events.

This theory led the authors to propose a hypothesis for their study. Commenting further, Dr. Kazuya Fujihara of the Department of Internal Medicine, Faculty of Medicine, Niigata University, said "The 2017 American College of Cardiology (ACC)/American Heart Association (AHA) BP guideline defined blood pressure $>130/80$ mm Hg as [hypertension](#). This guideline showed that the normal level is less than $120/80$ mm Hg and SBP $120-129$ mm Hg and DBP

Citation: Systolic blood pressure above 120 mmHg increases rate of cardiovascular disease (2021, June 23) retrieved 6 May 2024 from <https://medicalxpress.com/news/2021-06-systolic-blood-pressure-mmhg-cardiovascular.html>

This document is subject to copyright. Apart from any fair dealing for the purpose of private study or research, no part may be reproduced without the written permission. The content is provided for information purposes only.