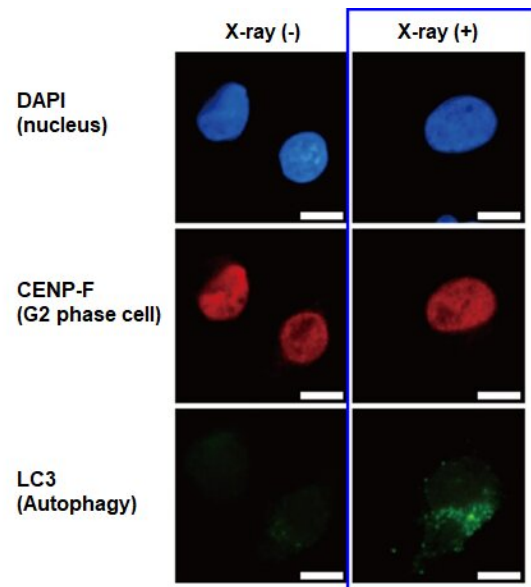
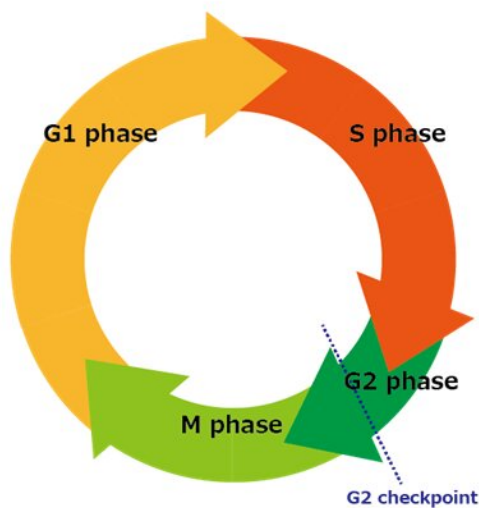


# Finding the weak points in radiation-resistant pancreatic cancer cells

June 8 2021



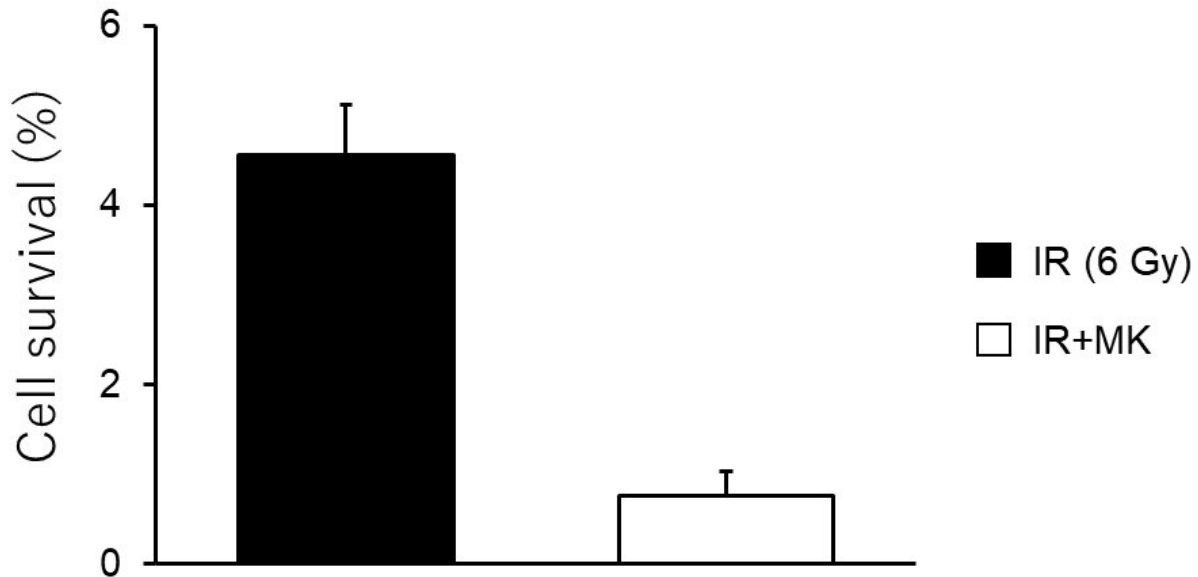
(Left) Cell cycle indicating the G2 checkpoint right before the M phase, which denotes cell division. (Right) MIA PaCa-2 cells were autophagy-positive (LC3-positive) 12 hours after X-ray irradiation. In contrast, no autophagy was found in non-irradiated cells. Credit: National Institutes for Quantum and Radiological Science and Technology

Of all the different types of cancer known, a subtype of pancreatic cancer called pancreatic ductal adenocarcinoma (PDAC) is among the most aggressive and deadly. This disease begins in the cells that make up certain small ducts in the pancreas and progresses silently, usually

causing no symptoms until advanced tumors actually obstruct these ducts or spread to other places. PDAC is not only difficult to diagnose, but also very unresponsive to available treatments. In particular, researchers have noted that PDAC cells can usually survive radiotherapy through mechanisms that remain largely unknown.

Part of the Radiation and Cancer Biology Group of the National Institutes for Quantum and Radiological Science and Technology, Japan, Dr. Sumitaka Hasegawa and colleagues Motofumi Suzuki and Mayuka Anko are currently studying what makes PDAC [cells](#) so radiation-resistant, and if there's a way to break through their defenses. In their latest study, published in the *International Journal of Radiation Oncology, Biology, Physics*, they've managed to uncover some of the mysteries underlying the curious relationship between treatment resistance in PDAC, the [cell cycle](#), and a process called [autophagy](#)—or "self-digestion."

Every cell in our body is the result of the completion of countless cell cycles, from one cellular division to the next. Each cell cycle, shown schematically in Figure 1, is a chemically orchestrated sequence of phases in which a multitude of proteins actively control the growth of the cell and ensure it divides safely. When DNA damage is encountered, the cell cycle is halted at what's called the G2 checkpoint and division is postponed until the problem is fixed. In many types of cancers including PDAC, the G2 checkpoint is strongly activated after irradiation, which has been shown to increase resistance to therapy.



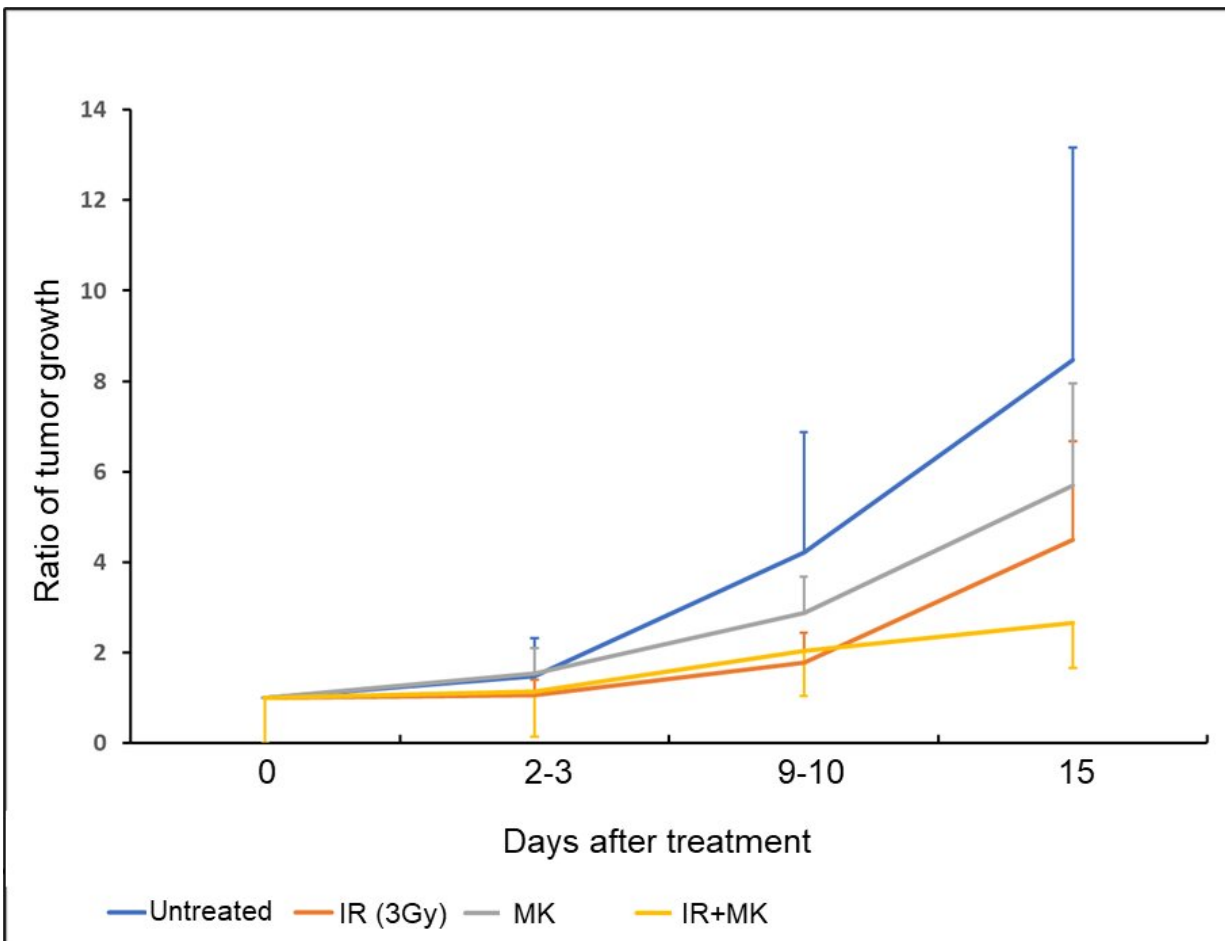
MIA PaCa-2 cells were either irradiated with X-rays (IR) only or irradiated with X-rays and administered a G2 checkpoint inhibitor (MK). The combined therapy killed cells much more effectively than irradiation alone. Credit: National Institutes for Quantum and Radiological Science and Technology

On the other hand, autophagy is a natural mechanism by which a cell digests some of its own organelles and proteins, especially damaged or unnecessary ones, to reclaim nutrients and maintain proper internal conditions, among other functions. While essential for [healthy cells](#), researchers have found that autophagy increases in cancer cells right after radiation treatment and that it actually helps them endure and survive therapy.

Most interestingly, because autophagy and the G2 checkpoint share some of the same chemical signals, it has been suggested that these two processes are interrelated. "Although a relationship had been proposed, the mechanistic details of the interactions between autophagy and the G2 checkpoint after irradiation were unclear. Thus, in our recent study, we

sought to understand more about the link between these processes, especially in PDAC cells," explains Dr. Hasegawa.

After numerous experiments in PDAC cell cultures, the team of scientists led by Dr. Hasegawa determined that irradiation-induced autophagy is dependent on the G2 checkpoint being activated. Moreover, they showed that autophagy helped the irradiated PDAC cells generate more energy (in the form of a molecule called ATP), which in turned led to their survival. Thus, the team proceeded to analyze what happened to irradiated PDAC cells when the G2 checkpoint was chemically inhibited. These irradiated cells, which could not activate the G2 checkpoint, did not undergo autophagy, and thus were much more likely to die post-radiation.



Combined therapy (IR+MK) suppressed tumor growth much better than either treatment alone in MIA PaCa-2 tumors grown on mice. Credit: National Institutes for Quantum and Radiological Science and Technology

These promising results were then tested in mice onto which PDAC cells were transplanted to produce tumors. By treating these mice with both radiation and the G2 checkpoint inhibitor, the scientists managed to greatly suppress tumor growth compared to when irradiation was administered alone. In essence, this means that suppressors of the G2 checkpoint, which also mitigate autophagy, could be effectively used as tools to lower the radiation resistance of PDAC cells. "Our research," concludes Dr. Hasegawa, "should facilitate the development of radiosensitizers or new radiotherapeutic strategies for PDAC. In turn, this could largely improve the survival rate of patients with this type of cancer."

Further studies will be needed to better understand the connection between the G2 [checkpoint](#) and autophagy and how these processes make cancer cells more resistant. Let us hope scientists eventually find ways to effectively combat particularly difficult [cancer](#) types, such as PDAC, and give more years of life to affected people.

**More information:** Motofumi Suzuki et al, Radiation-Induced Autophagy in Human Pancreatic Cancer Cells is Critically Dependent on G2 Checkpoint Activation: A Mechanism of Radioresistance in Pancreatic Cancer, *International Journal of Radiation Oncology\*Biology\*Physics* (2021). [DOI: 10.1016/j.ijrobp.2021.04.001](https://doi.org/10.1016/j.ijrobp.2021.04.001)

Provided by The National Institutes for Quantum and Radiological  
Science and Technology

Citation: Finding the weak points in radiation-resistant pancreatic cancer cells (2021, June 8)  
retrieved 9 April 2024 from

<https://medicalxpress.com/news/2021-06-weak-radiation-resistant-pancreatic-cancer-cells.html>

<p>This document is subject to copyright. Apart from any fair dealing for the purpose of private study or research, no part may be reproduced without the written permission. The content is provided for information purposes only.</p>
--