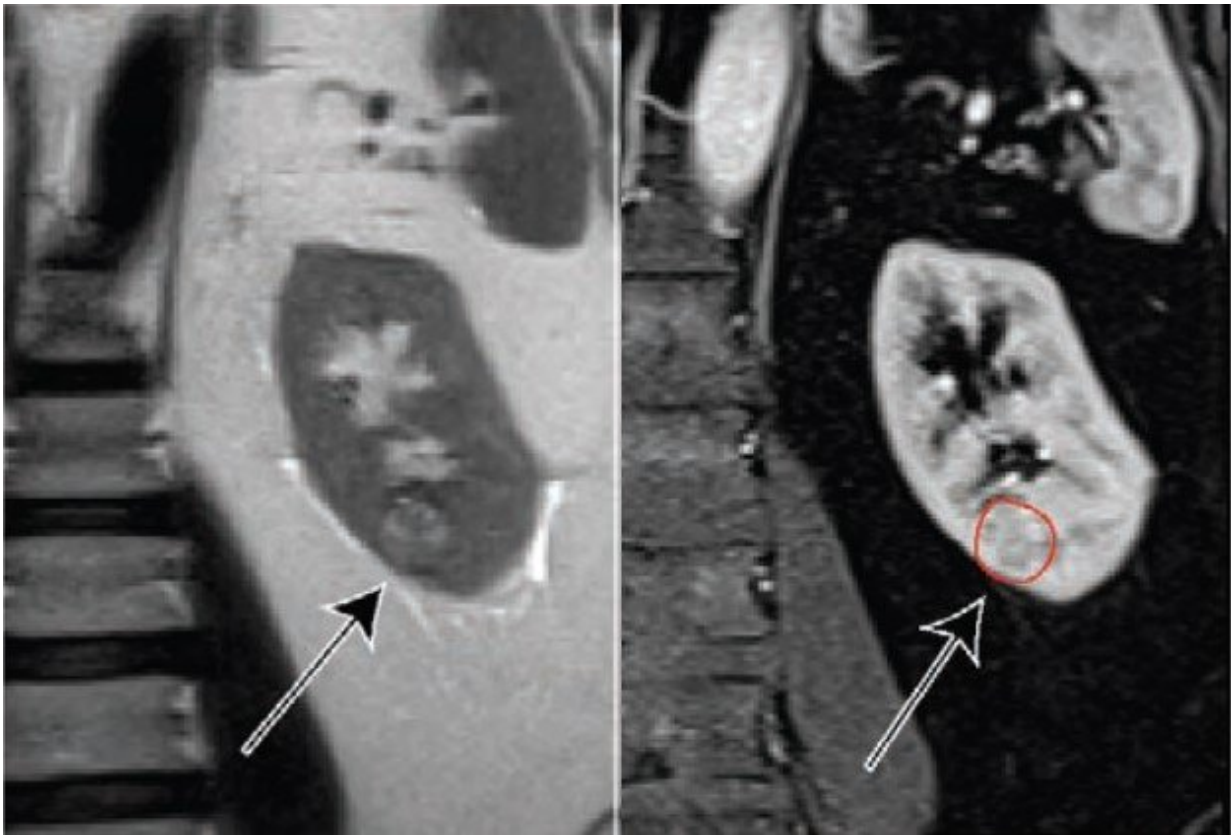


MRI, clear cell likelihood score correlate with renal mass growth rate

July 22 2021



Coronal T2-weighted single shot fast spin echo and coronal T1-weighted fat-saturated spoiled gradient echo acquired during corticomedullary phase--ccLS5 lesion outlined red for clarity. Credit: American Roentgen Ray Society (ARRS), *American Journal of Roentgenology* (AJR)

According to ARRS' *American Journal of Roentgenology (AJR)*, the standardized non-invasive clear cell likelihood score (ccLS)—derived from MRI—correlates with the growth rate of small renal masses (cT1a,

Citation: MRI, clear cell likelihood score correlate with renal mass growth rate (2021, July 22)
retrieved 7 June 2024 from

<https://medicalxpress.com/news/2021-07-mri-cell-likelihood-score-renal.html>

This document is subject to copyright. Apart from any fair dealing for the purpose of private study or research, no part may be reproduced without the written permission. The content is provided for information purposes only.