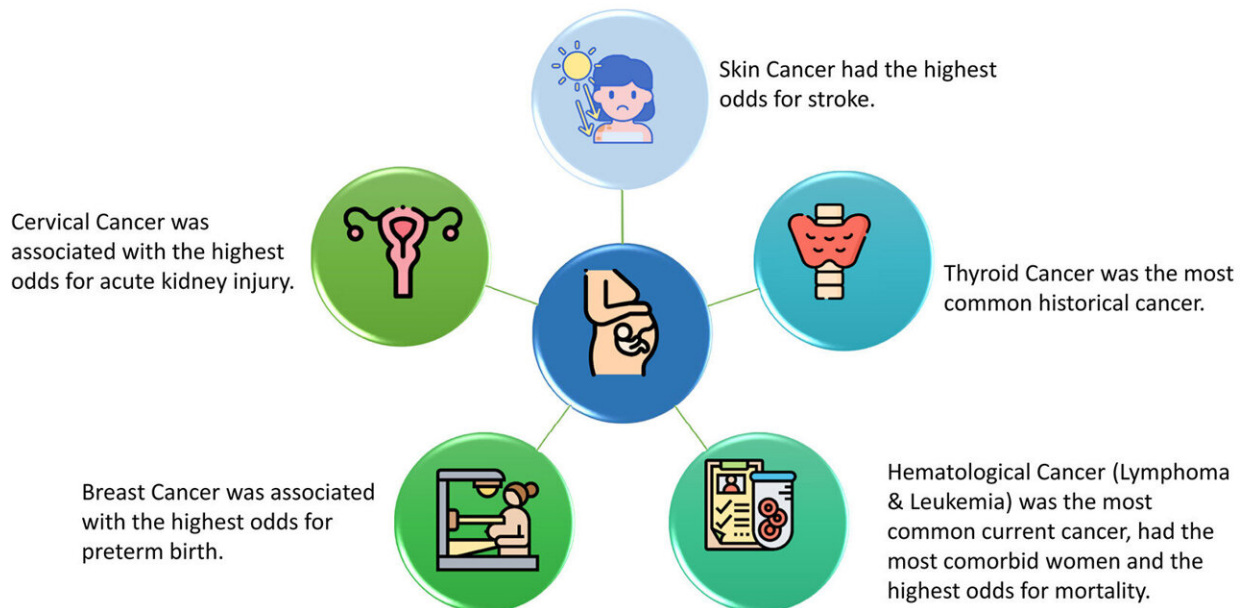


Researchers reveal most common complications associated with cancer in pregnant women

July 14 2021

Five Most Prevalent Cancer Diagnoses in Pregnant Women



Credit: *Mayo Clinic Proceedings* (2021). DOI: 10.1016/j.mayocp.2021.03.038

A study led by Keele University aims to improve outcomes for pregnant women who are at a higher risk of complications due to a current or historical cancer diagnosis.

New research, led by Dr. Pensee Wu from Keele University's School of

Medicine, has revealed that [pregnant women](#) who have previously had cancer or currently have cancer are more likely to experience two or more simultaneous medical conditions at the time of delivery, and aims to improve outcomes for these patients by increasing awareness amongst [healthcare professionals](#) of the possible complications posed to these women.

The study, published by *Mayo Clinic Proceedings*, found that the three most common cancer diagnoses associated with pregnancy are blood (hematological), thyroid and cervical cancers and the most common risks were associated with premature births.

Meanwhile, [cervical cancer](#) was also associated with the highest odds for [acute kidney injury](#), [skin cancer](#) was most associated with an increased risk of stroke, and hematological cancers were associated with higher risks of in-hospital complications and mortality in some cases.

Furthermore, the spread of cancer—metastases—around the body also increased the risk of preterm birth and maternal mortality.

To carry out the research, the team analyzed data of over 43 million women who delivered babies over a ten-year period between 2004 and 2014 and looked specifically at the outcomes for those who had current and historic cancer.

Dr. Wu, senior lecturer and honorary consultant in obstetrics and gynecology, said: "Cancer is the second commonest cause of death in women. Women who have been diagnosed with cancer either during pregnancy, or before they have completed childbearing, need appropriate counseling so they can make informed choices. Healthcare professionals should communicate the delivery risks associated with current and historical cancer diagnosis with this group of women."

More information: Pensée Wu et al, In-Hospital Complications in Pregnant Women With Current or Historical Cancer Diagnoses, *Mayo Clinic Proceedings* (2021). [DOI: 10.1016/j.mayocp.2021.03.038](https://doi.org/10.1016/j.mayocp.2021.03.038)

Provided by Keele University

Citation: Researchers reveal most common complications associated with cancer in pregnant women (2021, July 14) retrieved 24 April 2024 from <https://medicalxpress.com/news/2021-07-reveal-common-complications-cancer-pregnant.html>

This document is subject to copyright. Apart from any fair dealing for the purpose of private study or research, no part may be reproduced without the written permission. The content is provided for information purposes only.