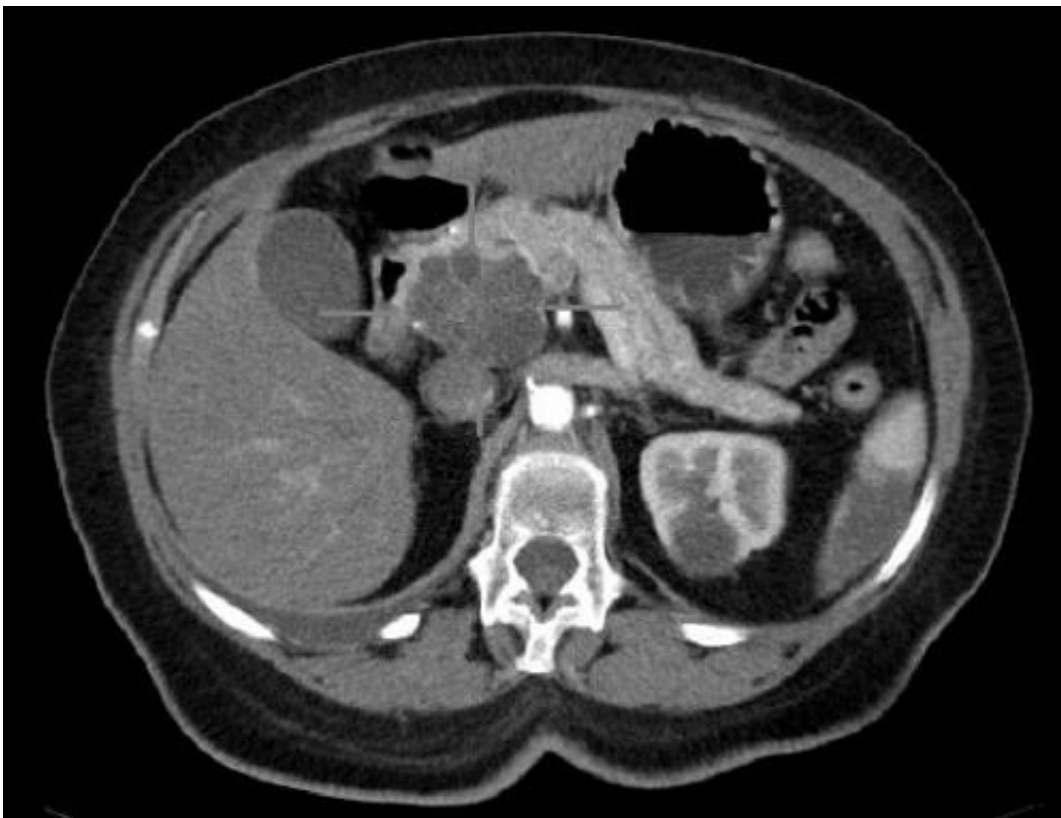


Inhibition of key pathway promotes iron-dependent cell death in pancreatic cancer cells

August 11 2021



Axial CT image with i.v. contrast. Macrocystic adenocarcinoma of the pancreatic head. Credit: public domain

One of the reasons pancreatic cancer remains the most deadly of the major cancers is that it craftily rewires normal cell survival mechanisms

to keep itself supplied with nutrients to fuel its expansion. A new study led by the University of Michigan Rogel Cancer Center demonstrates how inhibiting a key enzyme known as GOT1 can flip a switch in the cancer cells—causing them to shift from using nutrients to fuel growth toward conserving them to maintain energy levels.

In this state, the [cancer cells](#) release their iron stores and become vulnerable to a form of programmed, iron-dependent cell death known as ferroptosis, according to findings in [cell cultures](#) that appear in *Nature Communications*.

"If [pancreatic cancer](#)'s success comes from approaching nutrient metabolism differently than other cancers, our goal is to target aspects of that metabolism for therapeutic benefit," said study senior author Costas Lyssiotis, Ph.D., an associate professor of molecular and integrative physiology and of internal medicine at U-M.

The study was led by first author Daniel Kremer, Ph.D., a recent graduate of U-M Program in Chemical Biology and former member of the Lyssiotis lab.

The GOT1 pathway helps the cancer cells maintain their energy balance, Kremer explained.

"When we inhibit the enzyme, it doesn't kill the cell, but it puts it into a state of energetic stress, so it has to use those nutrients to maintain the cell rather than for growth," he said. "This study describes the mechanisms of that process and how we might be able to exploit it to trigger cell death through ferroptosis."

More information: Daniel M. Kremer et al, GOT1 inhibition promotes pancreatic cancer cell death by ferroptosis, *Nature Communications* (2021). [DOI: 10.1038/s41467-021-24859-2](https://doi.org/10.1038/s41467-021-24859-2)

Provided by University of Michigan

Citation: Inhibition of key pathway promotes iron-dependent cell death in pancreatic cancer cells (2021, August 11) retrieved 11 May 2024 from

<https://medicalxpress.com/news/2021-08-inhibition-key-pathway-iron-dependent-cell.html>

This document is subject to copyright. Apart from any fair dealing for the purpose of private study or research, no part may be reproduced without the written permission. The content is provided for information purposes only.