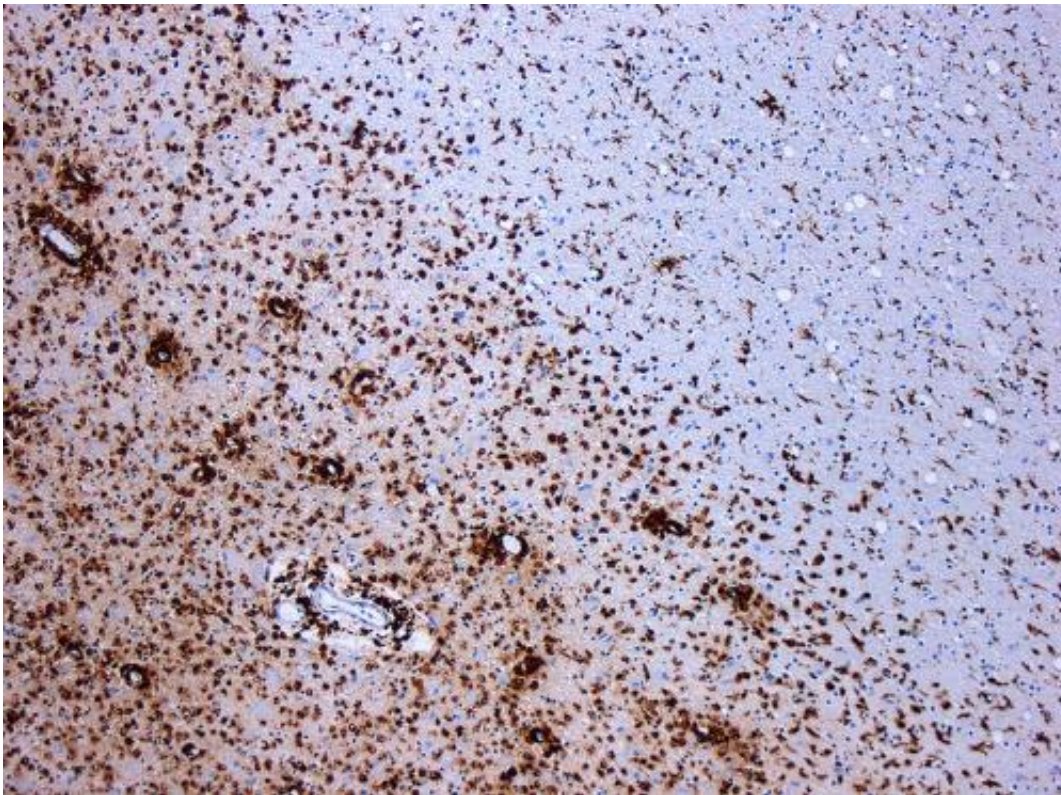


A promising path for future treatments to stop progressive multiple sclerosis

September 9 2021



Demyelination by MS. The CD68 colored tissue shows several macrophages in the area of the lesion. Original scale 1:100. Credit: [CC BY-SA 3.0](https://creativecommons.org/licenses/by-sa/3.0/) Marvin 101/Wikipedia

Researchers at the National Institutes of Health, Johns Hopkins University, and others have published results of studies that map out the activity of genes, molecules, cells, and their interactions in specific types

of multiple sclerosis (MS) brain lesions thought to contribute to progressive disability. The findings point to a possible informative new way to efficiently test the potential of therapies to stop nerve degeneration, and they identify culprits involved in tissue damage that might be targeted by new therapies in the future.

Using powerful MRI brain scans, researchers have recently identified brain lesions, or spots of MS activity and damage, that have surrounding rims that show up in the scans because of their iron content. These rims, which have been linked to progressive disability in MS, can form around lesions that did not naturally heal and seem to signify continuing inflammation and nervous [tissue damage](#).

To better define what's going on in these lesions, researchers at the NIH and Johns Hopkins University, including National MS Society fellows and two recipients of the Barancik Prize for Innovation in MS Research (Drs. Daniel Reich and Peter Calabresi), used advanced techniques to identify molecular activities in the rims and the types of brain cells and [immune cells](#) engaged there.

The team found subtypes of [brain](#) cells that appear to drive nerve degeneration within the lesions, some of which have also been found in other neurodegenerative diseases. They identified involvement of an immune mechanism called complement (specifically, C1q) and also found, in mouse models and tissue cultures, that blocking C1q could help resolve rim lesions and their [chronic inflammation](#).

In addition to uncovering potential therapeutic targets such as C1q, the researchers suggest that detecting the fate of rim [lesions](#) on MRIs may serve as an efficient way to quickly test potential benefits of experimental treatments without having to conduct large preliminary clinical trials. This might help address the unmet need for quicker ways to detect whether experimental therapies have benefits against MS

progression.

"A lymphocyte-microglia-astrocyte axis in chronic active multiple sclerosis," by Martina Absinta, Dragan Maric, Peter A. Calabresi, Daniel S. Reich and colleagues, was published in *Nature* on September 8, 2021.

More information: Martina Absinta et al, A lymphocyte–microglia–astrocyte axis in chronic active multiple sclerosis, *Nature* (2021). [DOI: 10.1038/s41586-021-03892-7](https://doi.org/10.1038/s41586-021-03892-7)

Provided by National Multiple Sclerosis Society

Citation: A promising path for future treatments to stop progressive multiple sclerosis (2021, September 9) retrieved 27 April 2024 from <https://medicalxpress.com/news/2021-09-path-future-treatments-multiple-sclerosis.html>

<p>This document is subject to copyright. Apart from any fair dealing for the purpose of private study or research, no part may be reproduced without the written permission. The content is provided for information purposes only.</p>
--