

Ruptures in cell nuclei promotes tumor invasion in breast cancer

September 23 2021

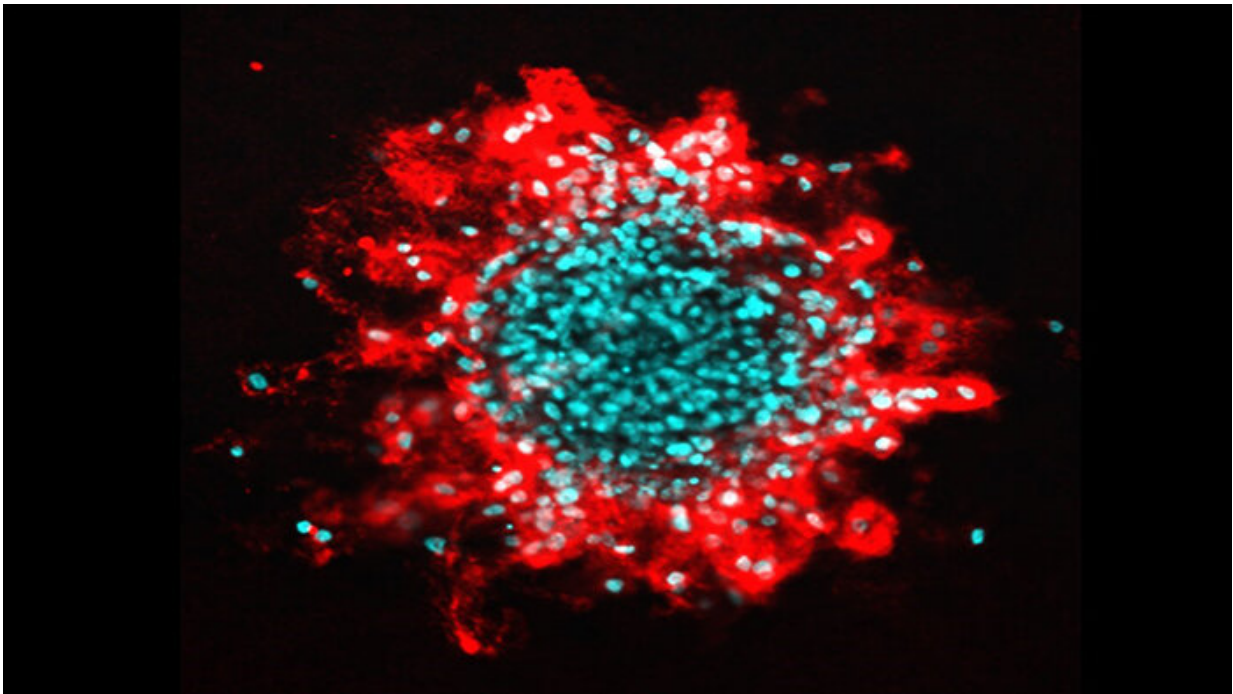


Image of human tumour cells invading a collagen matrix. The nuclei are stained in blue and the portion of the extracellular matrix degraded by the cells is red.
Credit: Guilherme Nader/Institut Curie

When cells multiply and migrate, they can be compressed and their nucleus may break open. This phenomenon causes DNA damage. Scientists from the CNRS, Institut Curie and INSERM have now shown that this facilitates the spread of cancer cells in breast tumors. The

results of this research were published on 21 September in *Cell*.

The nucleus of a cell fills a crucial function: to protect cell DNA and enable its proper use. But it can be deformed, or even temporarily fractured, if the cell itself is compressed and deformed, for example, in the case of migration or proliferation. This compression then leads to DNA damage. The consequences are accelerated aging for [healthy cells](#) and the acquisition of invasive properties for breast tumor [cells](#), as has just been shown by a research team from CNRS, Institut Curie and INSERM.

These scientists have shown that when cells are compressed and that breaks the nucleus, DNA can come into contact with a DNA-destroying enzyme called TREX1. TREX1's normal function is to protect the cell by destroying the DNA of viruses that try to infect it, but under these unusual conditions it attacks the cell DNA.

In healthy tissue, the cells then show signs of aging and stop dividing. However, the research team has observed that the consequences are different in a breast tumor: instead of killing the [cancer cells](#), the damage caused by TREX1 will make them more invasive. For example, when the tumor grows too much, the cells are compressed and then acquire the ability to destroy their environment to invade neighboring tissues, with increased risk of metastasis.

These results reveal the importance of the enzyme TREX1 in the development of breast cancer and also in aging. The scientists now want to identify and test molecules that could block its activity. Because TREX1 has an important role in modulating inflammation and immunity, these inhibitors may have many applications in therapy.

More information: Guilherme Pedreira de Freitas Nader et al, Compromised nuclear envelope integrity drives TREX1-dependent DNA

damage and tumor cell invasion, *Cell* (2021). DOI: [10.1016/j.cell.2021.08.035](https://doi.org/10.1016/j.cell.2021.08.035)

Provided by CNRS

Citation: Ruptures in cell nuclei promotes tumor invasion in breast cancer (2021, September 23)
retrieved 26 April 2024 from
<https://medicalxpress.com/news/2021-09-ruptures-cell-nuclei-tumor-invasion.html>

<p>This document is subject to copyright. Apart from any fair dealing for the purpose of private study or research, no part may be reproduced without the written permission. The content is provided for information purposes only.</p>
--