

Nontoxic drug delivery system could lead to effective therapies for currently untreatable cancers

October 21 2021

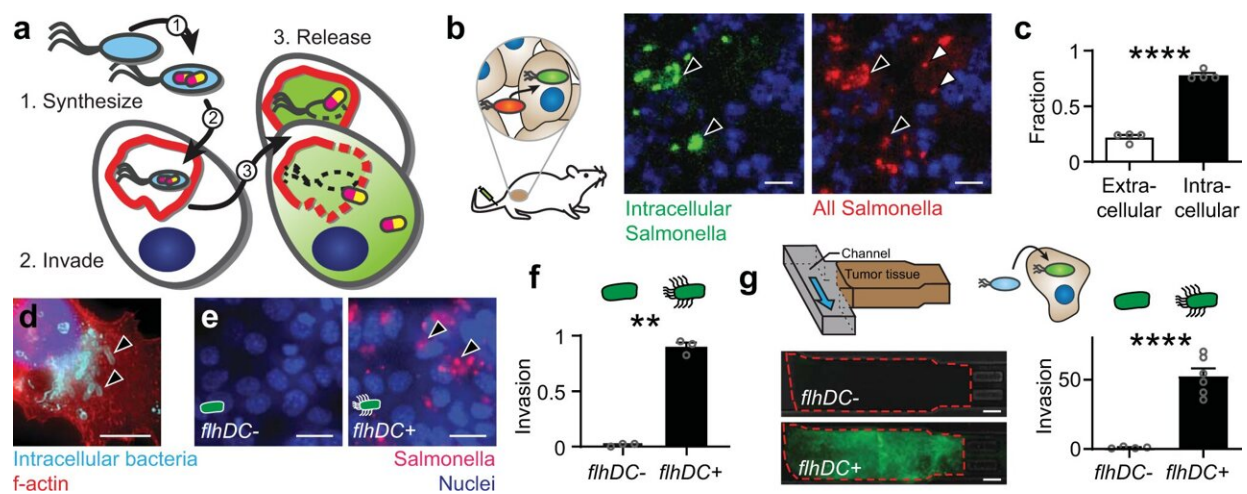


Fig. 1: The intracellular lifestyle of Salmonella is controlled by flhDC. a The design goals were to genetically engineer a bacterial vehicle that (1) synthesizes a protein drug (yellow/purple), (2) actively invades into cancer cells, and (3) releases drug, which escapes Salmonella vacuoles (SCVs, red). b, c Ninety-six hours after intratumoral injection of 2×10^6 CFU of intracellular-reporting Salmonella into subcutaneous 4T1 tumors in BALB/c mice, more bacteria (red) were intracellular (green; black arrows) than extracellular (white arrows; P

Citation: Nontoxic drug delivery system could lead to effective therapies for currently untreatable cancers (2021, October 21) retrieved 4 May 2024 from <https://medicalxpress.com/news/2021-10-nontoxic-drug-delivery-effective-therapies.html>

This document is subject to copyright. Apart from any fair dealing for the purpose of private study or research, no part may be reproduced without the written permission. The content is provided for information purposes only.