

Short on sleep? Your heart may have a harder time adjusting to disruptions during sleep

October 29 2021

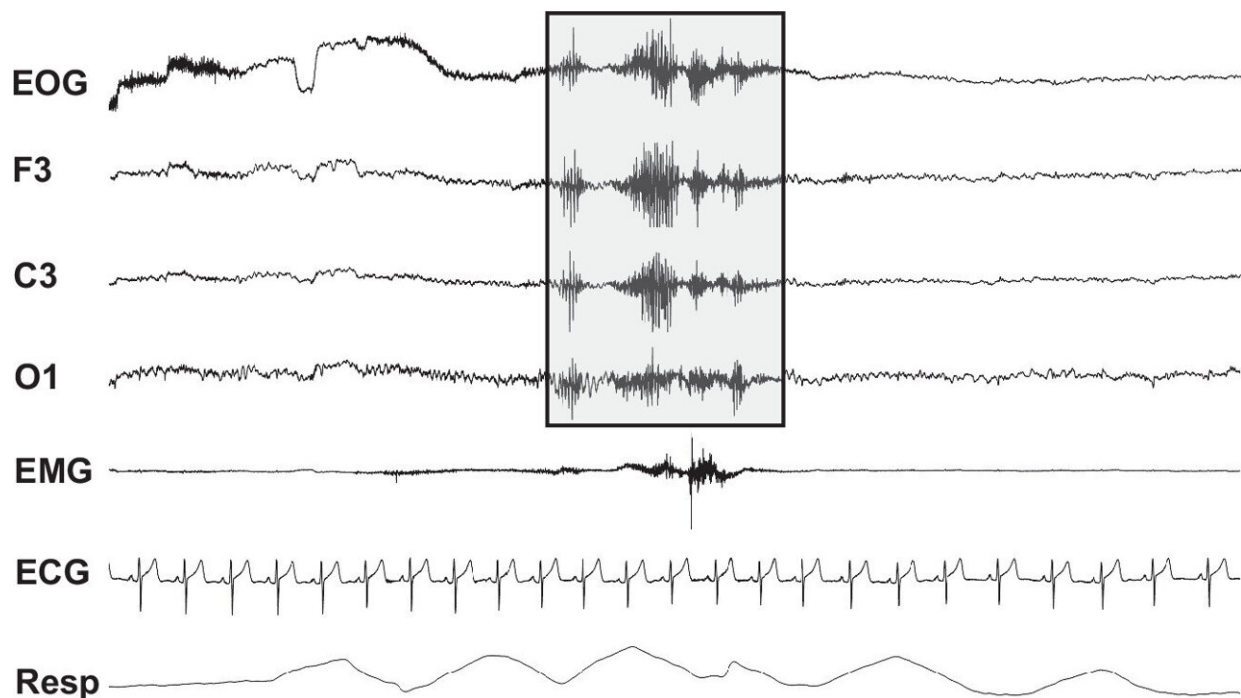


Figure 1. A representative image showing a 20-s polysomnography (PSG) sleep tracing including electrooculography (EOG), electroencephalography (EEG; F3, C3, and O1 leads), chin electromyography (EMG), electrocardiogram (ECG), and respiration (Resp). The light gray box outlines an exemplary cortical arousal as marked by an abrupt shift in the EEG frequency. Credit: DOI: [10.1152/ajpheart.00329.2021](https://doi.org/10.1152/ajpheart.00329.2021)

Otherwise healthy adults with chronically limited sleep showed abnormal heart rate patterns in a new study published in the *American Journal of Physiology-Heart and Circulatory Physiology*. The study was chosen as an APS select article for October.

"We really have to look at sleep as a major pillar of our overall health just like we look at [physical activity](#), exercise and nutrition," said co-author Jason Robert Carter, Ph.D.

Not getting enough sleep on a regular basis is associated with a wide variety of health problems, including cardiovascular issues such as high blood pressure, [heart](#) disease and stroke. According to the U.S. Centers for Disease Control and Prevention, 1 in 3 adults in the U.S. do not get enough sleep.

Researchers from Montana State University in Bozeman divided 35 otherwise healthy men and women into two groups: those getting at least seven hours of sleep (normal sleeping) and those sleeping fewer than seven hours (short sleeping). Participants were screened first by two validated sleep quality surveys and then by an at-home monitor to test for sleep-disordered breathing.

The team then observed participants overnight in a lab-controlled sleep study, the gold standard for measuring physiological states during sleep. They were also followed for a minimum of seven days at home via a wrist sensor, which allowed researchers to observe participants' sleep under more real-world conditions.

While we sleep, our brains will periodically show spikes in activity called spontaneous cortical arousals (CA). The researchers studied how the heart rates of normal sleeping and short-sleeping participants reacted to these incidents. While the two groups had a similar number of CA, the short sleeping group showed more elevated heart rate after these

incidents and their heart rates took longer to return to normal than the heart rates of normal sleepers.

"These findings offer evidence of nocturnal cardiovascular dysregulation in habitual short sleepers, independent from any diagnosed sleep disorders," researchers wrote.

More information: Jeremy A. Bigalke et al, Blunted heart rate recovery to spontaneous nocturnal arousals in short-sleeping adults, *American Journal of Physiology-Heart and Circulatory Physiology* (2021). [DOI: 10.1152/ajpheart.00329.2021](https://doi.org/10.1152/ajpheart.00329.2021)

Provided by American Physiological Society

Citation: Short on sleep? Your heart may have a harder time adjusting to disruptions during sleep (2021, October 29) retrieved 27 April 2024 from <https://medicalxpress.com/news/2021-10-short-heart-harder-adjusting-disruptions.html>

This document is subject to copyright. Apart from any fair dealing for the purpose of private study or research, no part may be reproduced without the written permission. The content is provided for information purposes only.