

# Specific cell population plays a key role in the effect arthritis has on the body and the pain patients feel

October 26 2021

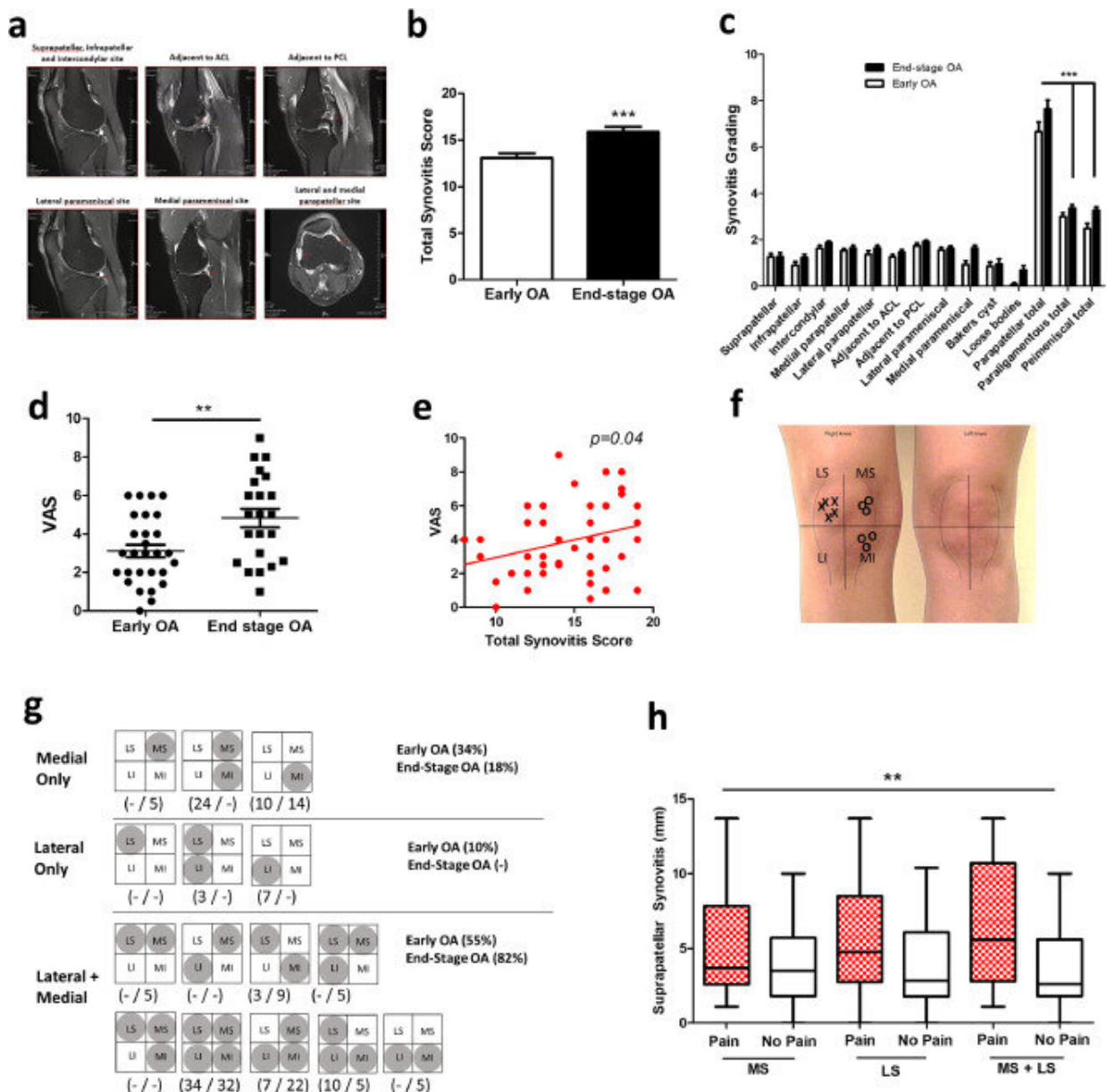


Fig. 1. The relationship between synovitis and patient-reported knee pain in early knee OA and end-stage knee OA (a) Representative proton-density MRI scans of OA patient knee joint (axial, coronal and sagittal scans), showing effusive synovitis (white/graying regions) across different anatomical sites. (b) Total synovitis score in early OA patients (n = 29) and end-stage OA patients (n = 22). \*\*\*= p

Citation: Specific cell population plays a key role in the effect arthritis has on the body and the pain patients feel (2021, October 26) retrieved 29 April 2024 from <https://medicalxpress.com/news/2021-10-specific-cell-population-key-role.html>

This document is subject to copyright. Apart from any fair dealing for the purpose of private study or research, no part may be reproduced without the written permission. The content is provided for information purposes only.