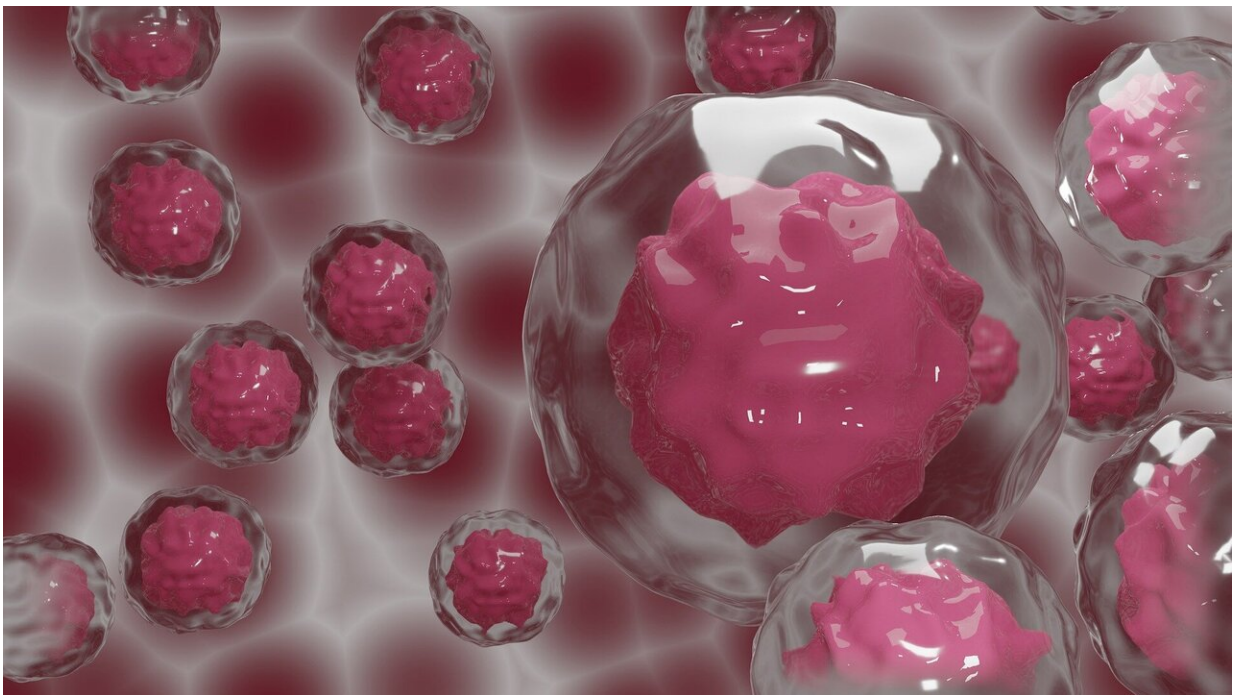


Research shows why immune checkpoint blockade impedes but does not stop glioblastoma progression

November 29 2021



Credit: CC0 Public Domain

Like locking the door but opening windows, an immune checkpoint therapy temporarily slows glioblastoma (GBM) progression but fails to establish an effective anti-tumor microenvironment and appears to increase molecular interactions inhibiting long-term immune response,

according to studies led by a UCLA research team.

In the Nov. 26 issue of *Nature Communications*, the researchers explain why PD-1 blockade—which is effective against several other cancers—is insufficient on its own against these deadly brain tumors. They also provide details on the immune landscape and propose future strategies and investigations.

"Primary brain tumors, such as glioblastoma, are remarkably resistant to immunotherapy. In preclinical studies, immunotherapy appears to be effective, and in a previous, small, phase 1 clinical trial using anti-PD-1 therapy before tumor-removal surgery, an interferon signature was induced and length of survival increased. But the treatment is not curative, suggesting there are other interactions within the microenvironment that this treatment does not address," said lead author Robert M. Prins, Ph.D., a researcher at the UCLA Jonsson Comprehensive Cancer Center and a tumor immunologist and professor at the David Geffen School of Medicine at UCLA.

To identify immune-related mechanisms and interactions responsible for the limited success and ultimate failure of PD-1 blockade to stop brain tumor progression, Prins teamed up with Willy Hugo, Ph.D., and other colleagues from the UCLA Jonsson Comprehensive Cancer Center, several departments at UCLA Health, and the Parker Institute for Cancer Immunotherapy in San Francisco to analyze immune cell populations at the single-cell level with advanced single-cell technologies.

PD-1, a so-called "checkpoint protein," helps T [cells](#) from the immune system properly regulate an attack, normally functioning as an "off switch" to protect normal cells. Many cancers, however, hijack the process to protect themselves from attack. In lung, skin and other cancers, the administration of monoclonal antibodies to inhibit the

checkpoint protein enables T cells to resume attacking [cancer](#) cells.

In glioblastoma, the researchers found, PD-1 blockade initially increases the proportion and number of a subset of "progenitor exhausted" T cells and activates a population of conventional dendritic cells, but the immune microenvironment remains largely dominated by other immune cells (myeloid cells) that produce inflammatory molecules and are immunosuppressive. To be effective, PD-1 blockade may need to be combined with therapies targeting other checkpoint proteins and immunosuppressive pathways.

According to the authors, the results suggest that anti-PD-1 treatment initially activates T cells in the bloodstream, some of which migrate into the tumor microenvironment and produce interferon gamma.

Despite the positive early effects of anti-PD-1 treatment, a population of white blood cells (monocytes and macrophages) recruited into the tumor microenvironment also appears to respond to the interferon signaling in a maladaptive fashion. Anti-PD-1 therapy appears to increase interactions between these cells and two other checkpoints on T cells that downregulate immune responses, CTLA-4 and TIGIT.

These interactions may limit the magnitude and persistence of the anti-tumor T cell activities, Prins and Hugo said. The data suggest that anti-PD-1 treatment improves survival outcomes by increasing an anti-tumor T cell response, but the treatment also changes the tumor microenvironment and influences non-T cell populations. The effectiveness of the first response is curtailed by engagement of the additional T cell checkpoints, and new strategies that also target other immunosuppressive pathways may improve the strength and durability of the anti-[tumor](#) response.

More information: Alexander H. Lee et al, Neoadjuvant PD-1

blockade induces T cell and cDC1 activation but fails to overcome the immunosuppressive tumor associated macrophages in recurrent glioblastoma, *Nature Communications* (2021). [DOI: 10.1038/s41467-021-26940-2](https://doi.org/10.1038/s41467-021-26940-2)

Provided by University of California, Los Angeles

Citation: Research shows why immune checkpoint blockade impedes but does not stop glioblastoma progression (2021, November 29) retrieved 6 May 2024 from <https://medicalxpress.com/news/2021-11-immune-checkpoint-blockade-impedes-glioblastoma.html>

<p>This document is subject to copyright. Apart from any fair dealing for the purpose of private study or research, no part may be reproduced without the written permission. The content is provided for information purposes only.</p>
--