

New mouse model mimics earliest stages of Alzheimer's disease

December 1 2021

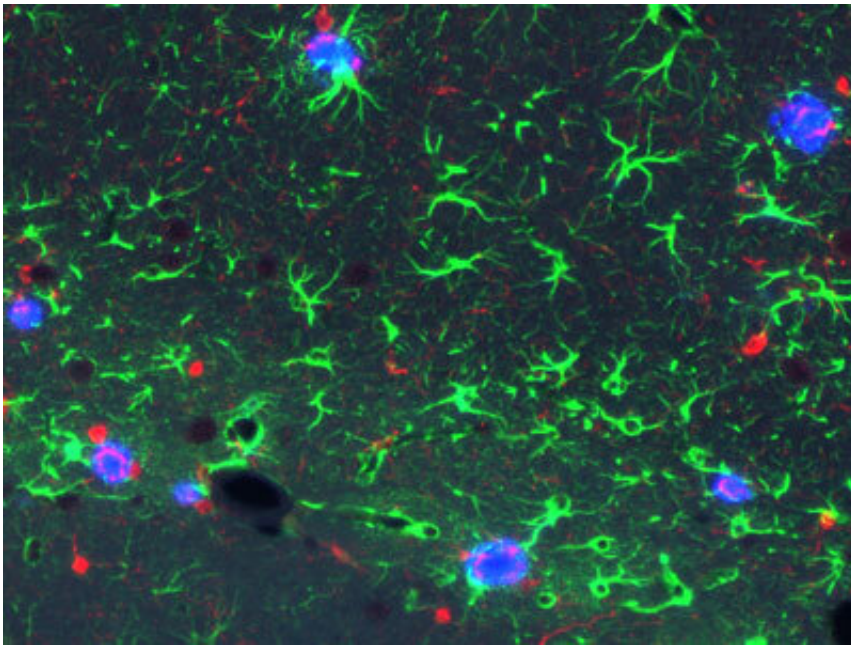


Figure 1: The new RIKEN model mice show hallmark signs of Alzheimer's disease in the brain—both amyloid plaques (blue) and inflammatory signals (green and red). Credit: RIKEN Center for Brain Science

Drug hunters hoping to prevent or delay the onset of Alzheimer's disease take note—a new mouse model developed at RIKEN offers a powerful platform for evaluating potential therapies designed to combat the neurodegenerative disease in its earliest stages.

Alzheimer's [disease](#) is globally the most common neurodegenerative

disorder. Many compounds that showed promise in [mice](#) models of the disease subsequently flopped in clinical trials on people. One reason for this failure is that the mouse models used were unsuitable.

The new [mouse model](#) developed by RIKEN researchers could improve this situation. At a few months old, the genetically engineered mice in the [model](#) began showing signs of sticky brain plaques, full of the human form of the amyloid-beta protein. Because they so rapidly developed the signature brain abnormalities associated with Alzheimer's disease, the mice should allow researchers to efficiently screen disease-modifying therapeutic candidates.

"Some [pharmaceutical companies](#) are interested in using our mice to screen potential drugs," says Takaomi Saïdo of the RIKEN Center for Brain Science. "And we're receiving requests from academic laboratories around the world."

Saïdo and colleagues had previously created several other mouse models of the disease, including two that each harbored a different mutant version of a gene called [amyloid precursor protein](#) (APP), which is found in families with hereditary forms of Alzheimer's. These mice, which exhibited hallmark signs of the disease in their brains, behavior and cognition, have been used by hundreds of research groups to elucidate aspects of the disease on a molecular level.

However, neither model is ideal for drug discovery. One is too slow to develop disease pathology. The other more quickly displays brain plaques full of amyloid-beta, but in a form that rendered the aberrant protein impervious to drug treatments.

A mouse model better suited to therapeutic manipulation was needed. So, Saïdo and colleague Hiroki Sasaguri took their slow-to-get-sick APP-mutant mice and bred them with another mouse strain that had

alterations in PSEN1, a gene that plays a critical role in converting APP into amyloid-beta fragments. The resulting mice had all the desired characteristics—quick disease onset and a human-like pathology amenable to drug interventions.

Unlike the previous fast-to-get-sick model, the new [mouse](#) model does not have an APP mutation that makes the amyloid-beta protein more prone to aggregate and more resistant to degrading enzymes or antibodies. Furthermore, it more precisely recapitulates the pathology of sporadic Alzheimer's. "It's the best tool for studying medications to treat early-stage Alzheimer's disease," says Saido.

Saido is happy to share the resource with the global research community. "Scientists wanting to use the model mice can just contact me," he says.

More information: Kaori Sato et al, A third-generation mouse model of Alzheimer's disease shows early and increased cored plaque pathology composed of wild-type human amyloid β peptide, *Journal of Biological Chemistry* (2021). [DOI: 10.1016/j.jbc.2021.101004](https://doi.org/10.1016/j.jbc.2021.101004)

Provided by RIKEN

Citation: New mouse model mimics earliest stages of Alzheimer's disease (2021, December 1) retrieved 24 April 2024 from

<https://medicalxpress.com/news/2021-12-mouse-mimics-earliest-stages-alzheimer.html>

<p>This document is subject to copyright. Apart from any fair dealing for the purpose of private study or research, no part may be reproduced without the written permission. The content is provided for information purposes only.</p>
--