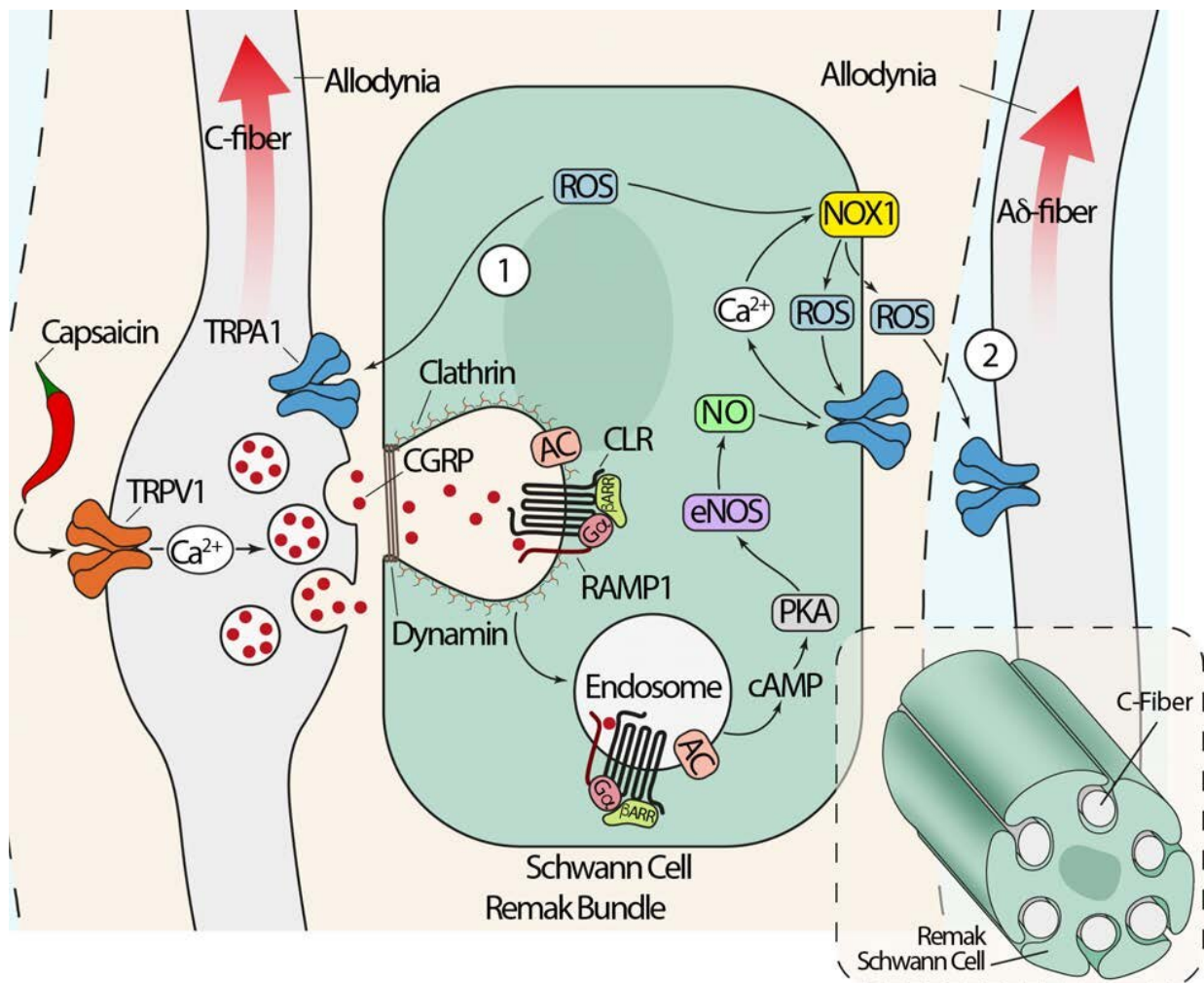


Study reveals how migraine pain signals are generated—and blocked

February 3 2022



An illustration of the pain signaling pathway elicited by CGRP. CGRP activates the CGPR receptor on Schwann cells. The CGPR receptor traffics to endosomes, where sustained signaling results in the release of nitric oxide. Nitric oxide targets ion channel TRPA1 in Schwann cells, which excites the neuron and

transmits pain signals related to migraine. Credit: Nature Communications, University of Florence & New York University

An international team of researchers has discovered that Schwann cells—which are abundant in the peripheral nervous system and create a protective sheath around nerve fibers—play an essential role in migraine pain. Their study, conducted in mice and human Schwann cells and published in *Nature Communications*, illustrates how pain is signaled from within Schwann cells and finds several ways to block this signaling, providing potential targets for new migraine treatments.

Migraines affect [more than 15 percent of adults](#), with women twice as likely as men to experience these intense headaches. Calcitonin gene-related peptide (CGRP), a small protein in the nervous system, is known to play an important role in migraine [pain](#); in fact, a new class of drugs to prevent migraines use injections of monoclonal antibodies to target CGRP or its receptor.

"While CGRP has been implicated in migraine pain, how it causes pain has been an area of controversy in the scientific community," said Nigel Bunnett, Ph.D., professor and chair of the Department of Molecular Pathobiology at NYU College of Dentistry. Bunnett led the study with Pierangelo Geppetti, MD, professor of clinical pharmacology at the University of Florence and director of the Headache Center of Careggi University Hospital.

"The success of CGRP monoclonal antibodies for migraine and the poor ability of antibodies to penetrate the [blood brain barrier](#) suggest that CGRP causes pain in the periphery rather than within the brain," added Bunnett, a researcher in the NYU Pain Research Center.

To explore the cellular mechanism of CGRP-evoked pain, Bunnett and his colleagues focused on Schwann cells, which are found outside the brain in the peripheral nervous system. The researchers studied mice in which the CGRP receptor, called CLR/RAMP1, was disabled in Schwann cells. They modified the CGRP receptor by deleting RAMP1, one of two important components of the receptor, from Schwann cells in the facial area of mice.

In normal mice, administering CGRP made the facial region very sensitive, a proxy for migraine pain. However, in mice lacking the CGRP receptor in Schwann cells, CGRP did not cause pain. In a second experiment, the researchers administered capsaicin—a chemical found in spicy chili peppers. Capsaicin activates an ion channel called TRPV1, which releases CGRP and usually causes pain. Again, capsaicin did not cause migraine-like pain in mice lacking the CGRP receptor in Schwann cells, providing further support for the idea that the CGRP receptor in Schwann cells plays a critical role in migraine pain.

Using human Schwann cells, the researchers then discovered what occurs within these cells to signal pain. They found that when CGRP binds to its receptor on a Schwann cell, the receptor moves into a compartment inside the cell called an endosome. Within endosomes, the CGRP receptor continues to signal for prolonged periods of time. That signaling generates nitric oxide—a mediator of pain—which is then released from the Schwann cell and interacts with an ion channel called TRPA1 on an adjacent neuron. TRPA1 excites the neuron and transmits [pain signals](#).

This new understanding of how pain originates inside Schwann cells gave the researchers two ideas for treating migraine pain: stopping the CGRP receptor from entering endosomes in the first place, or using nanoparticles to send drugs targeting the CGRP receptor in endosomes.

To keep CGRP [receptors](#) out of endosomes, the researchers inhibited

clathrin and dynamin, two proteins that are important for substances entering cells. Inhibiting clathrin and dynamin reduced pain signaling, offering a promising target for novel migraine treatments.

The researchers also successfully blocked CGRP-evoked pain using nanoparticles in which they encapsulated a small molecule drug that binds to and blocks the CGRP receptor. While most drugs only reach the surface of cells, nanoparticles can be designed to help medicine reach the endosome inside a cell and to release the drug once it arrives at the intended location. In Schwann cells, the nanoparticles carried the drug into endosomes and blocked the CGRP receptor, which strongly inhibited migraine pain.

"While the role of CGRP in migraine pain is well known, our study is the first to directly connect Schwann [cells](#) to [migraine pain](#). It offers potential new approaches to treating [migraine](#) based on our enhanced understanding of how pain is signaled from within endosomes," said Bunnett.

The researchers are working with several partners, including the National Center for Advancing Translational Sciences of the National Institutes of Health, to continue studying the use and safety of nanoparticle drug delivery before these treatments can be tested in humans.

More information: Schwann cell endosome CGRP signals elicit periorbital mechanical allodynia in mice, *Nature Communications* (2022). [DOI: 10.1038/s41467-022-28204-z](https://doi.org/10.1038/s41467-022-28204-z)

Provided by New York University

Citation: Study reveals how migraine pain signals are generated—and blocked (2022, February 3)
retrieved 19 April 2024 from

<https://medicalxpress.com/news/2022-02-reveals-migraine-pain-generatedand-blocked.html>

This document is subject to copyright. Apart from any fair dealing for the purpose of private study or research, no part may be reproduced without the written permission. The content is provided for information purposes only.