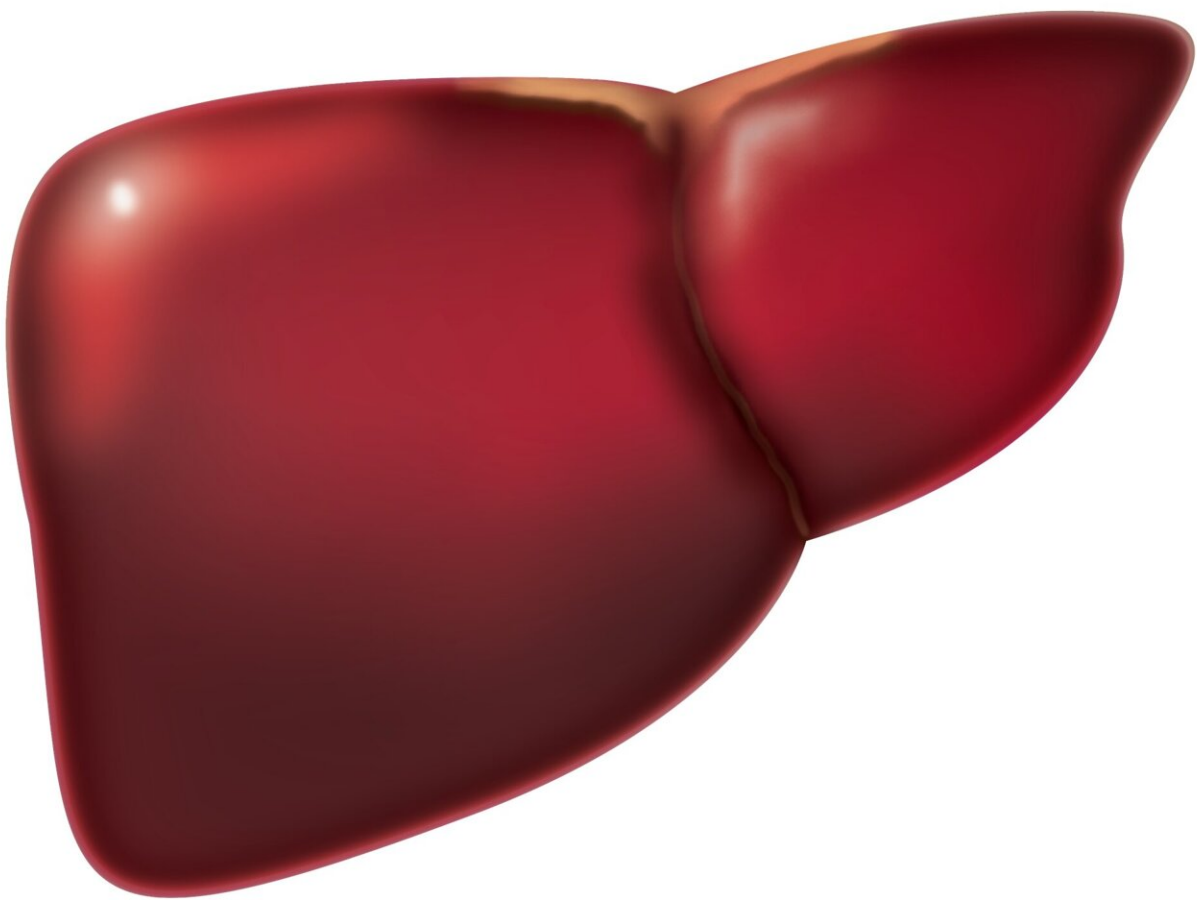


Nonalcoholic fatty liver disease subtypes exhibit distinctive cardiovascular risk profiles

March 22 2022



Credit: Pixabay/CC0 Public Domain

Nonalcoholic fatty liver disease (NAFLD), a disease affecting approximately one-quarter of the world's adult population, reflects dysfunctional hepatic lipid metabolism. A better understanding of NAFLD heterogeneity and its biology will facilitate the development of personalized treatments.

An international team of researchers, led by José M Mato at CIC bioGUNE-BRTA, has discovered the existence of three subtypes of NAFLD with different lipidomic phenotypes and risk of [cardiovascular disease](#). The study is published online on 26th February 2022 in *Hepatology*.

The research team examined whether NAFLD could be subclassified in different subtypes according to their serum lipidomic signatures.

The researchers analyzed [serum](#) lipidomes from an international cohort of 1154 individuals with biopsy proven NAFLD. Metabolomic signatures identified three NAFLD subtypes (A, B, and C), independent of histological disease severity. NAFLD subtypes showed distinct secretion rates of very low-density lipoproteins (VLDL), being lowest in subtype A. Moreover, these signatures aligned with known cardiovascular disease (CVD) and genetic risk factors with subtype A exhibiting a lower CVD risk profile. This may account for the variation in hepatic versus cardiovascular outcomes, offering novel, clinically relevant, risk stratification.

"In this publication we demonstrate that NAFLD arises through different

alterations in hepatic lipid metabolism, which opens the door to the development of more personalized treatments," said José Mato.

More information: Ibon Martínez-Arranz et al, Metabolic subtypes of patients with NAFLD exhibit distinctive cardiovascular risk profiles, *Hepatology* (2022). [DOI: 10.1002/hep.32427](https://doi.org/10.1002/hep.32427)

Provided by CIC bioGUNE

Citation: Nonalcoholic fatty liver disease subtypes exhibit distinctive cardiovascular risk profiles (2022, March 22) retrieved 27 April 2024 from <https://medicalxpress.com/news/2022-03-nonalcoholic-fatty-liver-disease-subtypes.html>

This document is subject to copyright. Apart from any fair dealing for the purpose of private study or research, no part may be reproduced without the written permission. The content is provided for information purposes only.