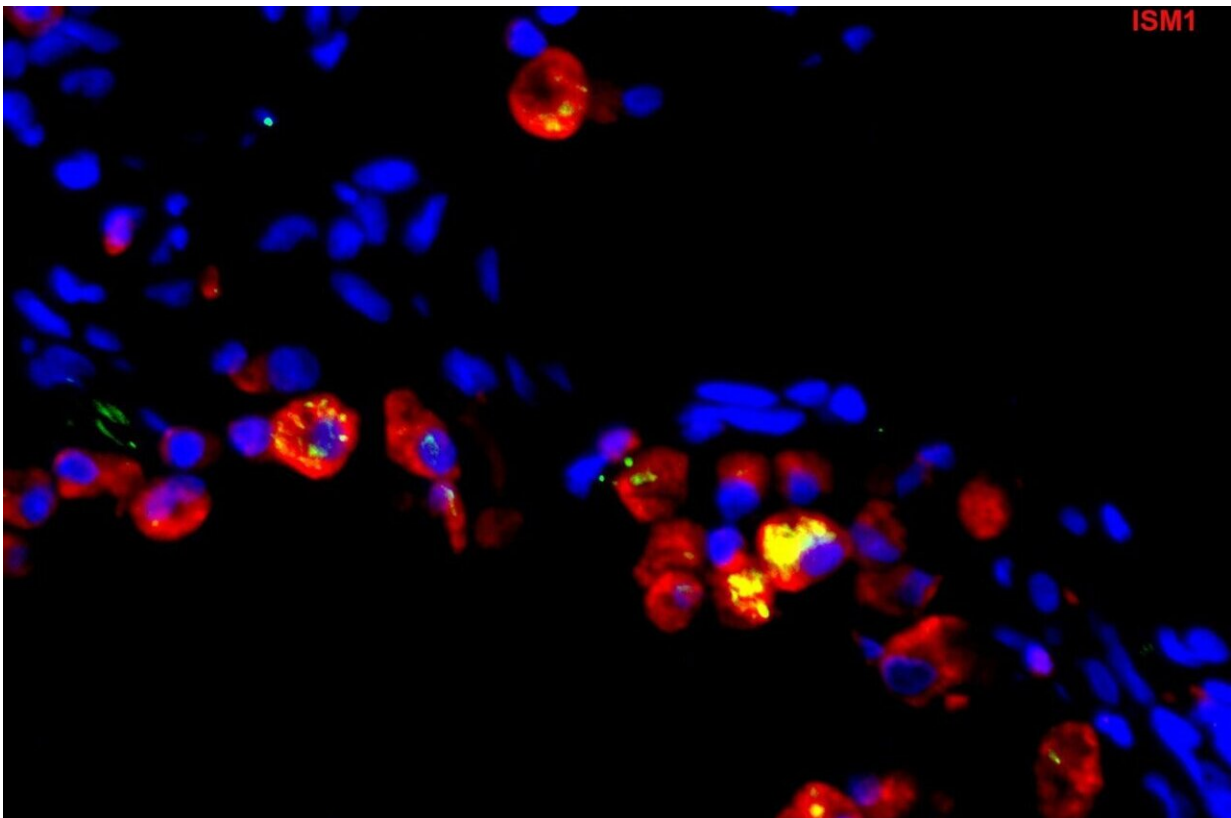


Promising biologic drug for treating chronic lung disease

April 25 2022



This image shows the ISM1 protein (in green) produced by alveolar macrophages (AMs) (red), which show up in this image via double immunofluorescence staining. Yellow represents the presence of both the ISM1 protein and AM in the same location, with blue representing the nucleus of a cell. Within the human body, ISM1 is found in the largest quantities in the lungs. Credit: National University of Singapore

NUS scientists have discovered a novel property of a protein found in human lungs that could lead to the development of biologic drugs to treat chronic obstructive pulmonary disease (COPD), a debilitating, progressive lung disease that is one of the leading causes of death worldwide.

The research was led by Associate Professor Ge Ruowen from NUS Biological Sciences and published in *Proceedings of the National Academy of Sciences* in January 2022.

Fighting COPD

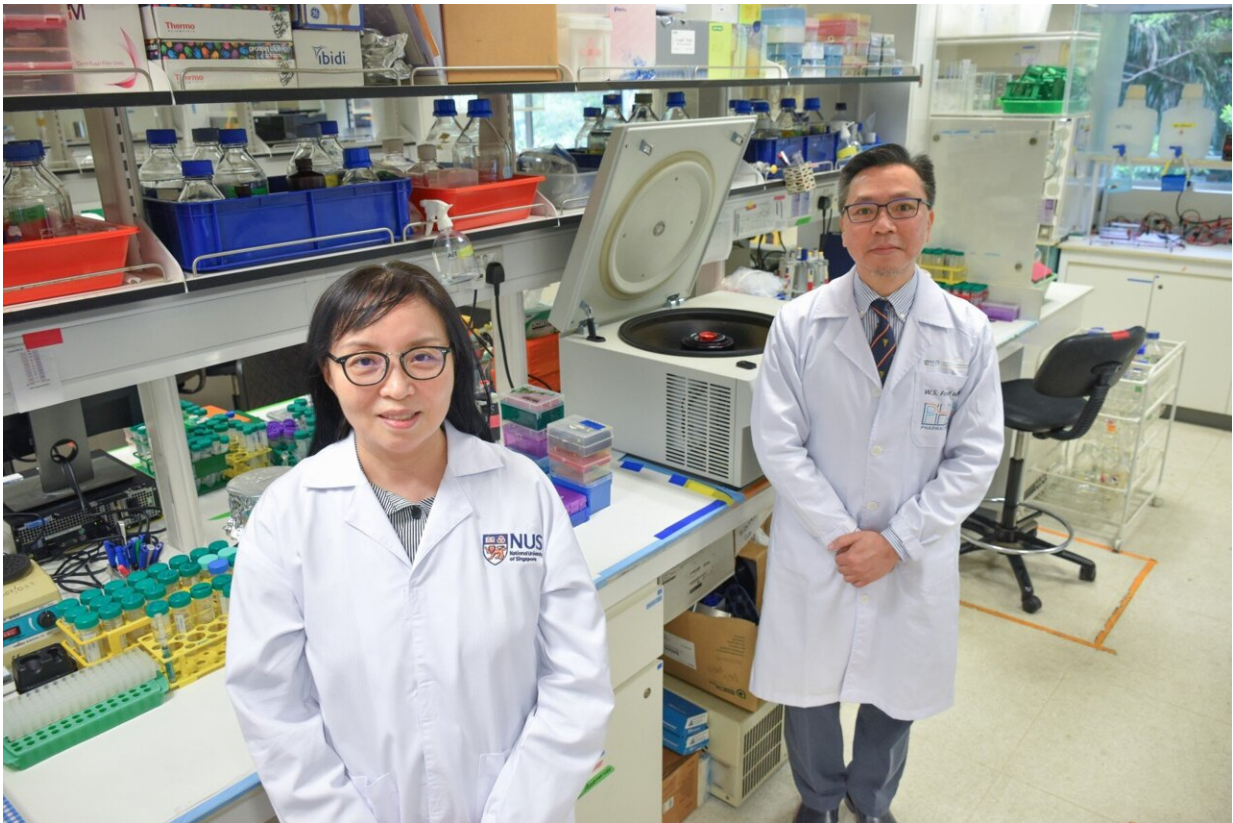
COPD is currently the third-leading cause of death globally and poses a large socioeconomic burden on nations. It can be caused by long-term exposure to irritants or particulate matter, such as cigarette smoke, and symptoms include coughing, breathing difficulties, mucus production and wheezing.

Patients with COPD display two key conditions—emphysema (the destruction of alveolar walls and enlargement of the alveoli) and chronic obstructive bronchitis (inflamed small airways). These patients suffer persistent respiratory symptoms with progressive long-term lung function decline. However, current drugs targeting COPD only provide symptomatic relief and are not able to suppress the underlying tissue inflammation to effectively block the spread of COPD or reduce mortality.

"COPD patients have difficulty breathing which hinders their ability to work or exercise. They do not absorb enough oxygen, and this affects their heart function too. COPD is a very dangerous condition, but public awareness of it is very low," said Associate Professor Ge.

Maintaining lung health

Alveolar macrophages (AMs) are [immune cells](#) residing in the airspace of lung breathing structures called alveoli and they can display either pro-inflammatory or [anti-inflammatory properties](#). In COPD, the pro-inflammatory AMs are amplified, which is a main cause of COPD.



Associate Professor Ge Ruowen (left) from NUS Biological Sciences and Professor Fred Wong (right) of NUS Pharmacology. Credit: National University of Singapore

Associate Professor Ge's team discovered that a lung-resident protein,

called isthmin 1 (ISM1), is critical for restraining inflammation in a healthy lung by selectively eliminating the pro-inflammatory type of AMs. In their laboratory studies, the research team observed that the absence of the ISM1 protein was associated with large numbers of pro-inflammatory AMs, enduring lung inflammation, progressive emphysema and significant lung function decline even without exposure to irritants.

The team discovered that ISM1 helps to maintain healthy lungs by targeting the GRP78 signaling receptor (csGRP78) that is present on the surface of the pro-inflammatory AM, triggering apoptosis (cell death), thereby reducing inflammation.

Developing enduring treatment for COPD

Endogenous—or internal—ISM1 proteins may not be sufficient to counteract lung inflammation in COPD.

To address this challenge, the research team worked with Professor Fred Wong at NUS Pharmacology, to conduct laboratory studies to examine the effectiveness of delivering recombinant ISM1 protein directly via droplets into the airway. The researchers observed a reduction in lung inflammation, suppression of emphysema development, and restoration of lung functions. These findings lend support to the development of ISM1 as a potential treatment for COPD.

"By directly targeting pro-inflammatory AMs using recombinant ISM1 protein, our novel treatment suppresses the root cause of COPD, and opens up the possibility of developing this into a viable treatment for this debilitating disease that affects many patients around the world," said Associate Professor Ge.

"These findings not only provide a new avenue to develop novel and

effective drugs for COPD, but also warrant studies of ISM1 in other inflammatory respiratory diseases," added Professor Wong.

The development of a drug based on this research is currently in pre-clinical stages of testing.

Associate Professor Ge and her team plan to study how recombinant ISM1 could also help to develop treatments for other inflammatory respiratory disorders such as [acute lung injury](#), [lung](#) fibrosis and asthma, and to devise the best method to administer such therapeutics.

More information: Terence Y. W. Lam et al, ISM1 protects lung homeostasis via cell-surface GRP78-mediated alveolar macrophage apoptosis, *Proceedings of the National Academy of Sciences* (2022). [DOI: 10.1073/pnas.2019161119](#)

Provided by National University of Singapore

Citation: Promising biologic drug for treating chronic lung disease (2022, April 25) retrieved 14 May 2024 from <https://medicalxpress.com/news/2022-04-biologic-drug-chronic-lung-disease.html>

<p>This document is subject to copyright. Apart from any fair dealing for the purpose of private study or research, no part may be reproduced without the written permission. The content is provided for information purposes only.</p>
--