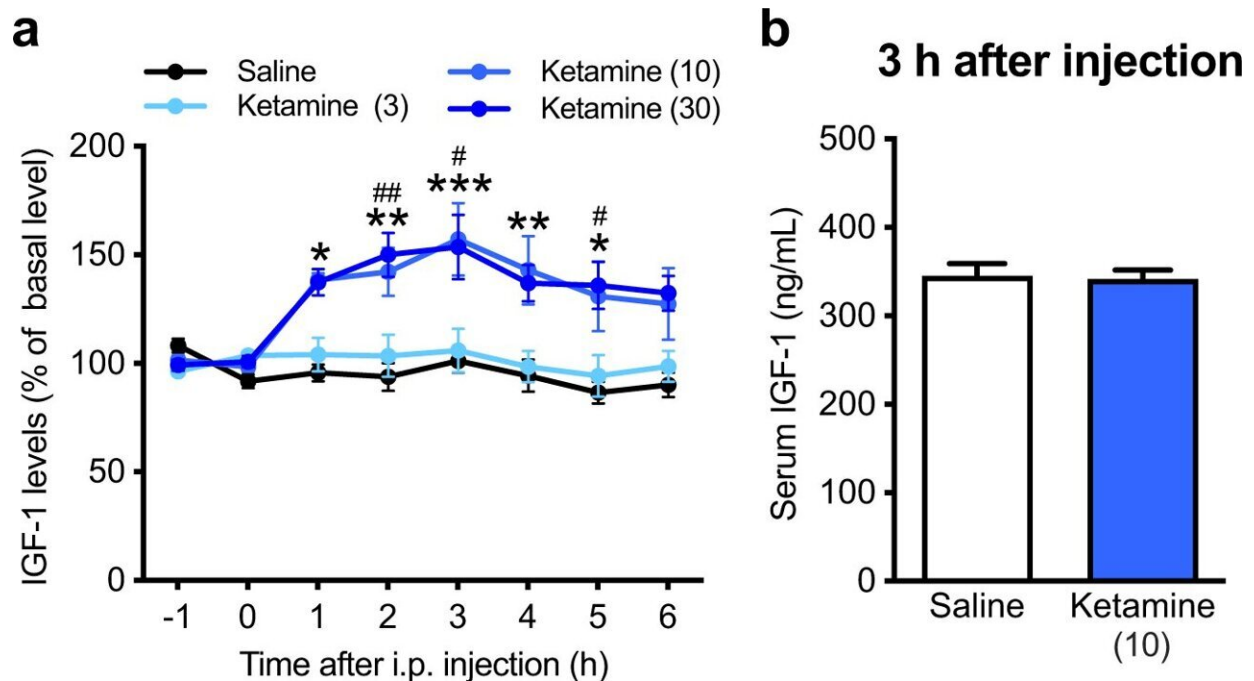


Using ketamine to find an undiscovered pathway in depression

May 25 2022



Ketamine induces IGF-1 release in the mPFC. a IGF-1 levels in extracellular fluid in the mPFC after i.p. injection of either saline (n = 13) or ketamine (3 mg/kg, n = 6; 10 mg/kg, n = 13; 30 mg/kg, n = 6; treatment × time interaction, $F_{21,238} = 2.796$, p

Citation: Using ketamine to find an undiscovered pathway in depression (2022, May 25) retrieved 23 April 2024 from

<https://medicalxpress.com/news/2022-05-ketamine-undiscovered-pathway-depression.html>

This document is subject to copyright. Apart from any fair dealing for the purpose of private

study or research, no part may be reproduced without the written permission. The content is provided for information purposes only.