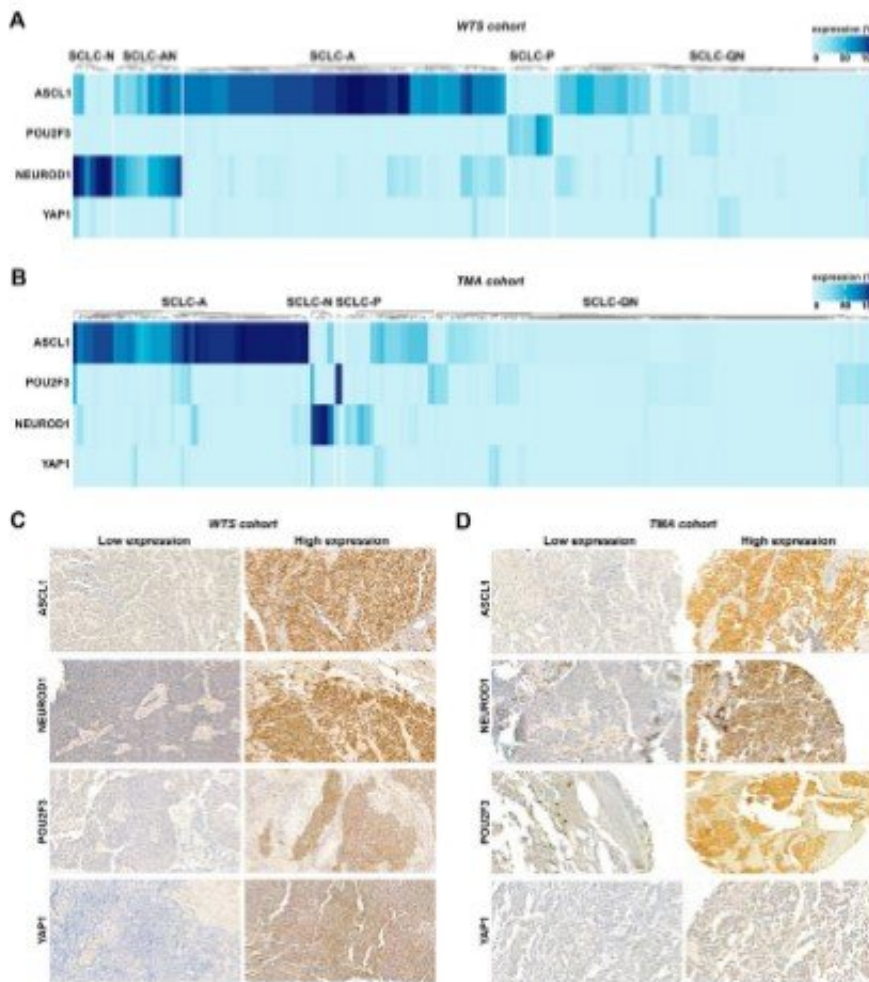


Different small cell lung cancer subtypes defined

May 17 2022, by Johannes Angerer



Molecular subtypes of WTS and TMA samples of surgically resected SCLCs defined by the IHC expression of ASCL1, NEUROD1, POU2F3 and YAP1(A) Unsupervised clustering of the WTS cohort revealed five distinct SCLC subgroups. In addition to SCLC-N (NEUROD1-dominant), SCLC-AN (combined ASCL1/NEUROD1), SCLC-A (ASCL1-dominant) and SCLC-P

(POU2F3-dominant), we found a fifth, quadruple-negative SCLC subtype (SCLC-QN) with low ASCL1, NEUROD1, POU2F3 and YAP1 expressions. Clustering was performed using the R statistical computing environment, and the color bar scale represents the IHC expression level of the transcription factors as a percentage of tumor cells showing positive staining. (B) Four major clusters were identified in the TMA cohort by unsupervised hierarchical clustering defined by the expression pattern of ASCL1, NEUROD1, POU2F3 and YAP1: SCLC-A, SCLC-N, SCLC-P and SCLC-QN. (C,D) IHC staining of representative tumors from (C) the WTS and (D) the TMA set, demonstrating expression pattern for each transcription factor. All images were captured with a 40x objective lens. Credit: *The Journal of Pathology* (2022). DOI: 10.1002/path.5922

Small cell lung cancer (SCLC) is a malignant disease associated with a particularly high mortality rate. According to a new multicenter study led by MedUni Vienna and conducted in collaboration with researchers from the Czech Republic, Hungary, Slovenia, Sweden and the United States, SCLC can be divided into several subgroups in terms of clinical behavior. These subtypes respond differently to chemotherapeutics and targeted drugs. This opens up possibilities for personalized treatment for this type of cancer as well.

SCLC is a particularly aggressive cancer that typically occurs in smokers, exhibiting rapid growth and a high propensity for metastasis. Recent studies suggest that SCLC may be differentiated into specific molecular subtypes. However, due to the significant lack of tumor material and the problem of tumor heterogeneity, this information could not be effectively validated in a [clinical setting](#).

This new research project has now examined 386 Central European cases, one of the largest cohorts of surgically treated patients to date. The results confirmed that differential expression of ASCL1,

NEUROD1, and POU2F3 proteins in tumor tissue defines biologically distinct SCLC subtypes that also have different disease outcomes in surgically resected individuals.

Personalized approach to treatment and follow-up

"In contrast to the increasingly personalized approaches observed in non-[small cell lung cancer](#), SCLC is still considered to be a homogeneous clinical picture and is treated in a standardized way both in hospitals and laboratories," explains first author Zsolt Megyesfalvi from the Translational Thoracic Oncology Lab at the Medical University of Vienna's Department of Thoracic Surgery. "We are now showing that differential expression of key transcriptional regulators clearly distinguishes five major SCLC subtypes." The results also show that high ASCL1 protein expression is an independent negative prognostic marker, whereas high POU2F3 protein expression is associated with more favorable survival outcomes.

Differential response to therapies

The researchers also comprehensively profiled protein expression using [mass spectrometry](#)-based proteomics in SCLC cell lines to assess the therapeutic relevance of each SCLC subtype. Study leader Balazs Döme, Head of the Translational Thoracic Oncology program at the Medical University of Vienna, commented: "We were able to use experiments with tumor cells to show that the levels of subtype-defining markers also influence the response to various targeted and chemotherapeutic agents in vitro. Notably, high POU2F3 expression, which is associated with better survival, correlated with sensitivity to standard chemotherapeutics. In contrast, high YAP1 [protein expression](#) correlated with poor response to chemotherapy. In addition, the abundance of subtype-defining proteins was also associated with the efficacy of certain targeted drugs

such as CDK, AURK, and IGF-1R inhibitors."

The study, published in *The Journal of Pathology*, is of great clinical relevance, since it sheds light on the diversity of SCLC and helps to facilitate the implementation of subtype-specific personalized approaches to treatment and follow-up strategies in this disease.

More information: Zsolt Megyesfalvi et al, Expression patterns and prognostic relevance of subtype-specific transcription factors in surgically resected small cell lung cancer: an international multicenter study, *The Journal of Pathology* (2022). [DOI: 10.1002/path.5922](https://doi.org/10.1002/path.5922)

Provided by Medical University of Vienna

Citation: Different small cell lung cancer subtypes defined (2022, May 17) retrieved 17 April 2024 from <https://medicalxpress.com/news/2022-05-small-cell-lung-cancer-subtypes.html>

<p>This document is subject to copyright. Apart from any fair dealing for the purpose of private study or research, no part may be reproduced without the written permission. The content is provided for information purposes only.</p>
--